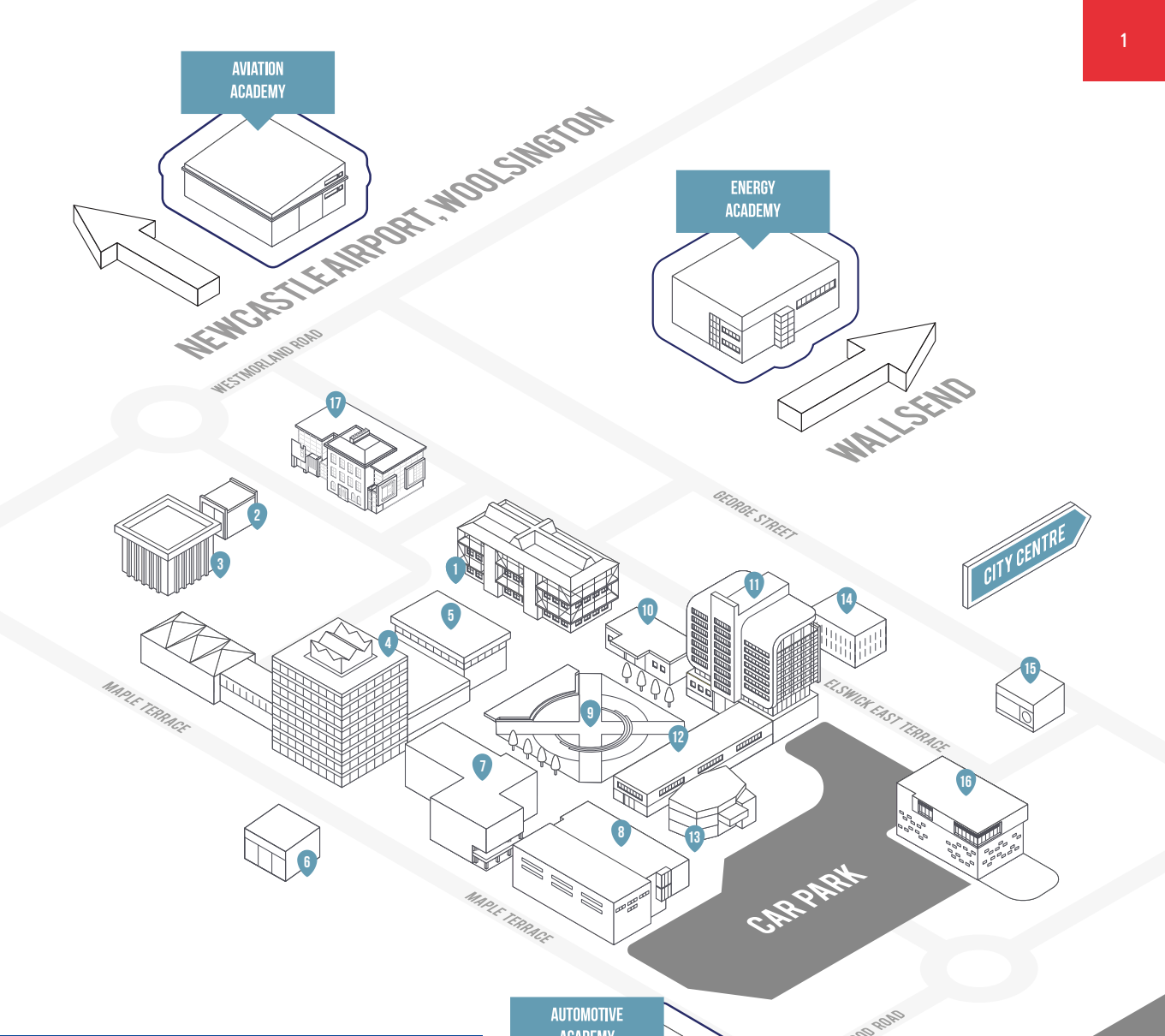


A **DEGREE**

A decorative graphic consisting of several concentric, rounded rectangular lines in a light green color, positioned to the left of the 'WITH A' text.

WITH A

**DIFFERENCE**



### CAMPUS MAP

- 1. MANDELA (SCHOOL OF ART AND DESIGN)
- 2. NURSERY
- 3. SPORTS CENTRE
- 4. TREVELYAN
- 5. CONSTRUCTION ACADEMY
- 6. RIVERSIDE DENE
- 7. RUTHERFORD
- 8. PERFORMANCE ACADEMY
- 9. RYE HILL PLAZA
- 10. LIBRARY
- 11. PARSONS
- 12. ARMSTRONG HOUSE
- 13. HE HUB AND TURNBULL SUITE
- 14. ESTATES
- 15. TEACHING DEVELOPMENT CENTRE
- 16. LIFESTYLE ACADEMY
- 17. RYE HILL HOUSE

#### DISCLAIMER

Information and courses published in this guide is intended for guidance purposes only and does not constitute a contract.

Newcastle College makes every effort to ensure that the information on courses given in this guide is up-to-date and accurate. However, the information may be subject to change and we do not guarantee its accuracy. NCG and Newcastle College do not accept any liability for omissions, errors or changes.

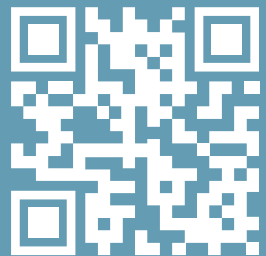
We reserve the right to review or amend entry requirements for any of our courses.

On occasion, it is necessary to move or withdraw courses owing to a variety of reasons. The College cannot, therefore, guarantee the provision of all courses advertised in this guide. Where a course is removed or amended, the college will make every effort to transfer students to a suitable and available alternative course.

Where applicable, we follow the guidelines set by funding authorities. Fees are subject to status and may change at short notice due to circumstances beyond our control. The fees payable are those in force at the time of enrolment, which supersedes any that may previously have been advertised.



OUR PROSPECTUS IS INTERACTIVE!  
YOU CAN CLICK OUR QR CODES TO FIND OUT  
MORE INFORMATION ABOUT DEGREES AT  
NEWCASTLE COLLEGE UNIVERSITY CENTRE

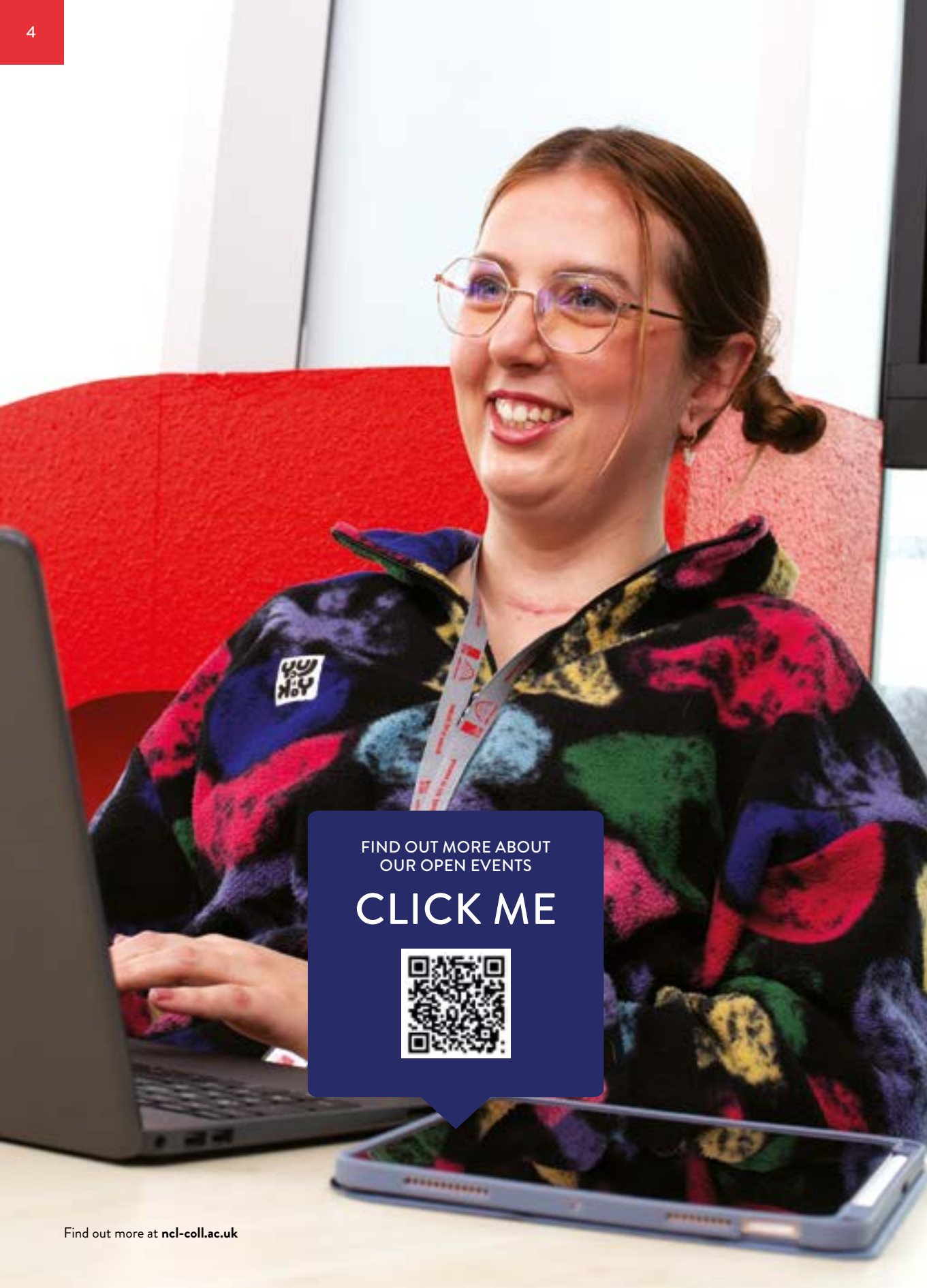


CLICK ME



# CONTENTS

Principal's Welcome	05
Our Degrees	06
A Degree with a Difference	08
Get Ready to Work	10
Our Higher Level Technical Qualifications	12
Fantastic Facilities	14
Investing in Your Future	18
Student Wellbeing	22
Mental Health and Wellbeing Support	23
Student Life on Campus	24
Students in Partnership	26
Student Support	28
Steppin' Up	30
Tuition Fees and Financial Support	32
Your Journey to Studying with Us	33
Part-Time Study	35
Use Your Experience	36
Education and Teacher Training	38
Postgraduate Studies	41
International	42
Graduation	44
How to Apply	46
<b>COURSES</b>	
Aesthetics and Make-Up	48
Art and Design	52
Aviation	56
Business	58
Childcare	60
Computing	62
Criminology, Policing and Criminal Law	66
Digital Arts	68
Energy	72
Engineering	74
Health and Social Care	78
Hospitality and Tourism	82
Music	86
Performing Arts	88
Rail and Civil Engineering	92
Sport and Exercise	94
UCAS Tariff	98
Entry Requirements	99
What Else Do We Offer?	100



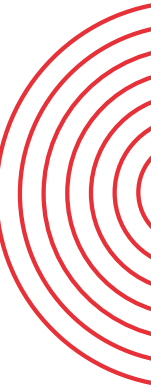
FIND OUT MORE ABOUT  
OUR OPEN EVENTS

CLICK ME



# HELLO AND WELCOME

TO NEWCASTLE COLLEGE UNIVERSITY CENTRE



I know that you have lots of big decisions to make about your future right now, but I hope you're making time to enjoy the excitement of it too.

I'm delighted that you're considering taking the next step towards your future career with us, and I hope you decide that we're the right place for you. Supporting you through your studies and ensuring you have a brilliant student experience comes first here.

Preparing you for your future is at the heart of everything we do. Whatever you choose to study, our degrees are developed in collaboration with employers, so you'll graduate with the skills you really need to secure your dream job. You'll benefit from industry-standard facilities, strong industry links, exclusive higher education study and social spaces, work experience opportunities and outstanding student support to help you reach your true potential.

You couldn't choose a better time to join us. We're currently investing millions of pounds to

bring you the latest equipment and facilities that will support you in your learning and prepare you to enter the workforce of the future.

Students in Aviation, Digital, Energy and Engineering are already benefitting from leading-edge teaching facilities, including specialist digital labs and even a brand-new jet. There is much more to come over the next few months, including high-spec CAD and BIM suites in our engineering and construction facilities.

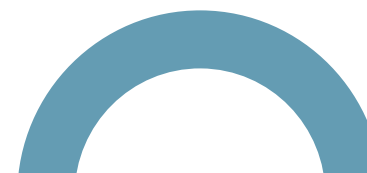
During your degree, we'll give you the tools you need to develop your skills and experience and you'll be challenged, inspired and supported to pursue your passion, harness your talent and achieve your full potential.

I hope to be welcoming you onto campus very soon.

**JON RIDLEY**  
PRINCIPAL



**During your degree, we'll give you the tools you need to develop your skills and experience and you'll be challenged, inspired and supported to pursue your passion, harness your talent and achieve your full potential.**





# OUR DEGREES

**At Newcastle College University Centre we offer degree courses to help you realise your career aspirations. Industry-experienced tutors, exciting work placements, live briefs from industry and guest lectures are just some of the things you may experience when you study with us. We continually refresh and adapt the content of our degrees to ensure you study course content that meets the demands of industry.**

## CERTIFICATE IN HIGHER EDUCATION (CERT HE)

This higher education qualification is awarded after one year of full-time study. A Certificate in Higher Education aims to equip you with the knowledge, academic skills and contextualised understanding of theory, practice, trends and developments within the chosen subject area.

## FOUNDATION DEGREES

A Foundation Degree is a two-year career focused qualification that is equivalent to the first two years of an Honours Degree. The aim of a Foundation Degree is to provide you with the employment skills and professional knowledge that you will need to work in your chosen sector.

After completing your two-year degree, you will have acquired a whole range of skills that will help you when it comes to finding employment. Alternatively, you may wish to progress onto a one-year Honours Degree (Top-Up) at Newcastle College University Centre.



## HONOURS DEGREES

We create, design and validate our own degree programmes, just like a university. We have a number of three-year Honours Degrees in a variety of subject areas, all of which aim to set you up for employment. With an Honours Degree, you will study for three years with us and on completion you can start your career in industry or pursue postgraduate studies.

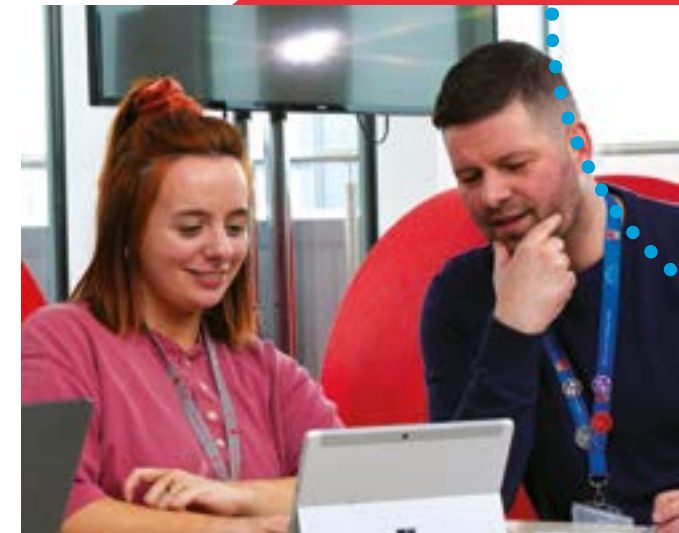
## HONOURS DEGREE (TOP-UPS)

We offer a wide range of one-year Honours Degree (Top-Ups), which offer natural progression from a Foundation Degree. These courses are a great way to build on what you have learnt during your Foundation Degree as well as achieving an Honours Degree qualification, to help you stand out in the competitive job market. Many of the Top-Up degrees that we offer allow you to specialise in a specific area, giving you a real edge on other graduates.

## DEGREE APPRENTICESHIPS

A Degree Apprenticeship is typically a three-year work-based qualification that combines invaluable on-the-job work experience with an Honours Degree. Designed in partnership

with employers, you will be in full-time employment and combine working with studying at Newcastle College University Centre. Degree Apprenticeships are a professional pathway for your career development. If you are in employment and wish to discover the benefits of a Degree Apprenticeship, get in touch with our Apprenticeships Team by emailing [apprenticeships@ncl-coll.ac.uk](mailto:apprenticeships@ncl-coll.ac.uk)



# A DEGREE WITH A DIFFERENCE

**At Newcastle College University Centre we pride ourselves on delivering high-quality, practical education, enabling you to develop the professional skills demanded by industry. Our University Centre offers you a real alternative to university where you can study university-level degree courses that are designed in collaboration with employers. You'll be taught in smaller class sizes in specialist teaching facilities and have numerous opportunities to engage with employers to develop your professional skills.**

## STRONG INDUSTRY LINKS

Our University Centre has strong links with local organisations and partners in the region, meaning you directly benefit from these relationships. Access to industry is a key focus for us and as a student you will benefit from valuable work placement opportunities, live briefs set by employers as well as industry insights from guest speakers. Many of our graduates have gone on to forge successful careers in the region due to these strong industry links.



**CLICK ME**

TO FIND OUT ABOUT STUDENT LIFE ON CAMPUS

## RESEARCH AND SCHOLARLY ACTIVITY

We are proud of our vibrant academic community and place real emphasis on research, scholarship and professional practice. Throughout your time studying at Newcastle College University Centre, you will be offered numerous opportunities to undertake research projects, co-produce with peers and staff or undertake initial research-like activities within your discipline and across the University Centre.



## OUTSTANDING STUDENT SUPPORT

Unlike a traditional university, our students are usually taught in smaller class sizes, which means you will benefit from more one-to-one support from your course tutors. We have a dedicated team of Academic Support Coaches who are there to help, guide and support you to make the most of your academic studies. Our Higher Education Support Team works with students who have a disability, specific learning difficulty, mental health difficulty or long-term medical condition. The team is there to support you to achieve, regardless of your circumstances.

## SMALLER CLASS SIZES

You will learn in a smaller class size compared to a university setting, benefiting from more one-to-one tutor support. Our students say that they enjoy learning in smaller class sizes as they get to know their tutor and classmates better and feel comfortable speaking out in class.

## PRACTICAL LEARNING

Unlike a traditional university you will be taught in a hands-on way, developing your skills in environments which replicate the workplace. This means that you gain the skills required by industry, ensuring you graduate ready for the world of work. Take a look at our fantastic facilities and learning environments on page 14.

## DEDICATED SPACES FOR HIGHER EDUCATION

Our University Centre offers dedicated spaces for higher education students. Our HE Hub is an ideal place for you to study, socialise or collaborate with friends. You can also study in our new HE learning space on the ground floor of the HE Hub, The Turnbull Suite, with PCs, private meeting pods and seating space – perfect for group projects. The tenth floor of our Parsons Building is a great place to study with stunning views of the city too. It is fully equipped with PCs, break-out areas for group work and a chill-out area to relax in between studying. As a degree student, you will also have access to laptops and tablets for use on campus.



### STUDENT PROFILE

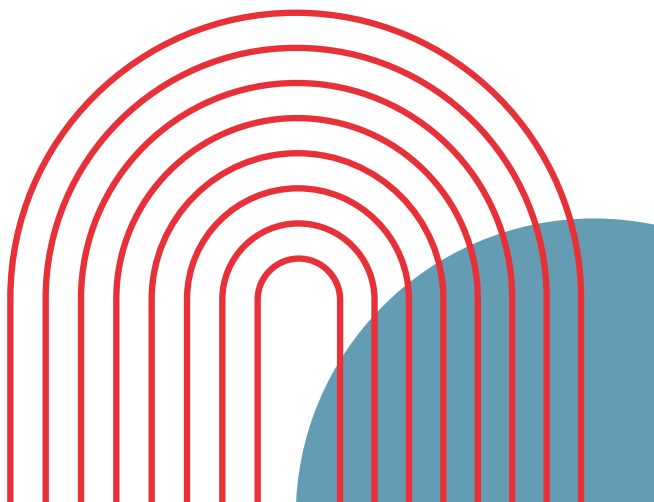
**Studying my degree at Newcastle College University Centre means I've got great qualifications to back up the skills I've developed, the knowledge I've gained and the experiences I've had along the way, as well as having a top-notch CV for when I start applying for jobs.**

**PHILLIP HO,  
HOSPITALITY STUDENT**

# GET WORK READY

**At Newcastle College University Centre we are committed to ensuring you are ready for the workplace by the time you graduate from your course. As part of our work experience opportunities you will benefit from:**

- exciting work placement opportunities to gain valuable professional experience.
- guest lectures from employers with industry insight.
- opportunities to undertake additional qualifications alongside your degree course.
- the chance to gain membership of professional bodies and/or associations.
- industry-experienced tutors who know what it takes to succeed.
- advice on CV building, interview tips and building a professional social media presence.
- networking events to meet prospective employers.
- accreditation from professional bodies.
- collaborative projects with students from other degree courses to get the most out of your learning experience.
- local, national and international field trips to enrich your studies.
- opportunities to exhibit at industry-relevant exhibitions to showcase your work.



# OUR HIGHER TECHNICAL QUALIFICATIONS

**Our Higher Technical Qualifications (HTQs) have been developed with employers to ensure that our students are receiving the most relevant skills and knowledge they need to progress in their career after graduation. We offer seven HTQs at the University Centre across Business, Childcare, Computing, Health and Social Care, Hospitality, Performing Arts and Sport.**

## WHAT IS A HIGHER TECHNICAL QUALIFICATION?

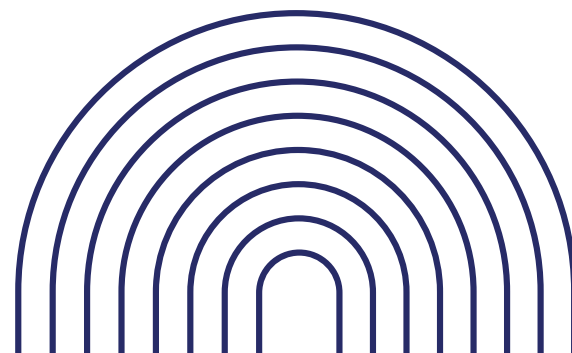
An HTQ is a quality mark by the Institute for Apprenticeships and Technical Education and is part of their focus to ensure Level 4 and Level 5 qualifications meet the need of employers and learners.

## WHO ARE HIGHER TECHNICAL QUALIFICATIONS FOR?

Higher Technical Qualifications (HTQs) are for any student who is ready for higher education and wants to work in those technical sectors where

they can go straight from Level 5 into a technical career such as a technician or early career managers.

HTQs are an alternative to apprenticeships or degrees. They may suit you if you want a more practical, employer-led study programme.



Find out more at [ncl-coll.ac.uk](http://ncl-coll.ac.uk)



Look out for the HTQ logo throughout the prospectus!

## WHAT HIGHER TECHNICAL QUALIFICATIONS CAN I STUDY?

You can study a range of degrees across Business, Childcare, Computing, Health and Social Care, Hospitality, Performing Arts and Sport. They are:

- FdA Business Management
- FdA Children and Young People
- FdA Children and Young People (Part-Time)
- FdA Culinary Arts
- FdA Culinary Arts (Part-Time)
- FdSc Criminology, Policing and Criminal Law
- FdA Live Performance Technical Production
- FdSc Healthcare Practice
- FdSc Networking and Cyber Security
- FdSc Physical Education and Sports Coaching
- FdSc Software Engineering.

## WHAT ARE THE BENEFITS TO EMPLOYERS?

There are many benefits to employers for hiring students with a HTQ. They include:

- helping to grow talent in the business and develop a skilled and qualified workforce
- employees who undertake HTQs will be challenged to deliver high quality work whilst learning and developing skills
- HTQs help the next workforce generation to advance in their careers with new skills and knowledge.



**CLICK ME**

TO FIND OUT MORE ABOUT OUR HIGHER TECHNICAL QUALIFICATIONS







# FANTASTIC FACILITIES

Our fantastic facilities will give you an exceptional learning experience in an environment built around industry. Our facilities replicate real-working environments to give you an insight into what it is like to work in your chosen industry.

Find out more at [ncl-coll.ac.uk](http://ncl-coll.ac.uk)

## AVIATION ACADEMY

This impressive training venue is based at, and supported by, Newcastle International Airport and includes engineering workshops kitted out with the very latest equipment, such as an IT suite equipped with modern Computer Based Training (CBT) equipment, a 1,500m<sup>2</sup> aircraft hangar housing two Jet Provost, an avionics laboratory and a BAE Jetstream 31 aircraft. We also have our own Boeing 737 aircraft. Check out page 18 to see how we're investing in our Aviation facilities.



## ENERGY ACADEMY

This is a multi-partner, cross-regional facility based on the north bank of the Tyne. Our award-winning academy provides a centre for innovation, training and development for the energy sector with engineering workshops, Computer Aided Design (CAD) and the world's most advanced Immersive Hybrid Reality (iHR) offshore wind training facility, a virtual reality system to help train future engineers. Check out page 18 to see how we're investing in our Energy facilities.



**CLICK ME**

TO FIND OUT  
MORE ABOUT OUR  
FANTASTIC FACILITIES



## LIFESTYLE ACADEMY

Our leading facility for Aesthetics and Make-Up, Hospitality and Tourism students is also home to The Retreat, our very own beauty salon and The Chefs' Academy, our award-winning AA College Rosette restaurant. These real-working environments help you to develop the skills and experience that employers are looking for in graduates.



## MANDELA (SCHOOL OF ART AND DESIGN)

A purpose-built centre for innovation and creativity, our Mandela Building is where our Art and Design and Digital Arts students hone their skills. We have fully-equipped drawing, painting and sculpture studios, fashion and Mac suites, textile workshops, two gallery spaces and a digital photography suite including the largest infinity scoop and tethered capture facilities in the North East. We also have our brand-new Digital Hub located here where our Computing students study. We have invested over £1million in the specially-built digital space, offering a state-of-the-art facility for our higher education students. Our facilities include classrooms, immersive technology labs and cyber security practical rooms, as well as a Powerwall. Our facilities are equipped with the latest software, hardware and network equipment, all of which meet industry standards. Check out page 18 to see how we're investing in our Digital facilities.



## PARSONS

This impressive facility is home to our Childcare, Health and Social Care degree students. Facilities include childcare training rooms, a specialist counselling suite and hospital simulation wards which offer you a real-working environment experience.



## PERFORMANCE ACADEMY

Our award-winning Performance Academy is a unique creative hub and provides outstanding facilities, whether you are studying Music or Performing Arts. Facilities include a 200-seat theatre, music venue with professional standard sound, PA, monitoring and lighting, 4K TV studio with pre and post production, recording studios, radio station, acting and dance studios with sprung floors and media production rooms.

## RAIL AND CIVIL ENGINEERING ACADEMY

Newcastle College's Rail and Civil Engineering Academy is a specialist facility in Gateshead which replicates the environments you would find in the rail and civil engineering industries. Facilities include indoor and outdoor overhead lines, signalling and mechanical workshops, level crossing barriers, a soils laboratory and dedicated civil engineering learning environments.



# INVESTING IN YOUR FUTURE

We're in the middle of an £8million investment into our higher education facilities, providing you with leading-edge equipment to support your studies. We're committed to making sure you have a great learning experience with us, and this funding, awarded by the Office for Students (OfS), will give you the chance to train with even more industry-standard equipment than ever before, so you can be confident that you'll graduate with the skills and experience you need in your future career.

Students in Aviation, Digital, Energy and Engineering are already benefitting from leading-edge teaching facilities and equipment including new electric vehicles, wind turbine nacelles, drones, robots, VR and XR software, Cyber Security Labs, a new HE learning space, and even a new jet.



The next stage of investment will see a dedicated HE Hub for construction and engineering including high-spec CAD/BIM suites and specialist digital labs.



# WHAT NEW FACILITIES CAN I LOOK FORWARD TO?

## AVIATION

- Avionic training simulators
- A new training aircraft with cockpit and operational gas turbine engines.



Find out more at [ncl-coll.ac.uk](http://ncl-coll.ac.uk)

## DIGITAL

- Two cyber security labs
- Two immersive technology labs
- 4m 3D Powerwall for interacting with 3D models
- XR (Immersive Technology) visualisation suite
- Transportable VR (Virtual Reality) solution
- CAD (Computer Aided Design) and PLM (Product Lifecycle Management) software
- CAD to VR software
- Virtual Motion Capture Technologies
- iPad Pros
- High-specification laptops and workstations
- Oculus Quest gaming headsets
- AI robots
- Full Performance Capture suits
- Web server
- Teaching screens
- Black Magic cameras
- Raspberry Pi4 desktop kits
- Clevertouch screens.



## ENERGY

- Solar photovoltaic systems
- Resources for sustainable building methods and retrofit
- An electric vehicle and new EV charge points
- A brand-new wind turbine training nacelle
- An autonomous inspection robot to support inspection in confined/dangerous places
- An industrial drone to support inspection of wind turbine towers and blades at height
- A Subsea inspection ROV (Remote Operated Vehicle) to support inspection of subsea wind structures
- A robotic arm.



## ENGINEERING

- A dedicated HE Hub for Construction Engineering and Energy, which will include three high-spec CAD/BIM suites
- A brand-new industry-standard Manufacturing Suite, including PLC programming, automation, design and 3D printing facilities.
- Smart Robot Car Kits for digital programming
- Computational fluid dynamics (CFD) software
- An industrial robot
- FLUID SIM to design and test hydraulic and pneumatic circuits
- Siemens PLC including HMI
- A 3D Industrial Printer
- A CNC Lathe Machine
- Access to the latest quality assurance technology.



**CLICK ME**

TO FIND OUT  
MORE ABOUT OUR  
INVESTMENT IN FACILITIES



# STUDENT WELLBEING

At Newcastle College University Centre we take the wellbeing of our students seriously.

As we have all experienced in the Covid-19 pandemic, making sure we know what support is available and where we can get help is really important. Sometimes you just want some tips on how to unwind or switch off from your studies, and sometimes you may feel like you need some more support.

That's why, as a student at Newcastle College University Centre, you'll have access to help and support throughout your studies. We want to make sure you have the best possible experience with us, and that includes supporting you and your wellbeing whilst you study with us.



**CLICK ME**

TO FIND OUT  
MORE ABOUT OUR  
STUDENT SUPPORT

DID YOU KNOW?  
**WE HAVE 24/7 SECURITY  
ON CAMPUS?**

# MENTAL HEALTH AND WELLBEING SUPPORT

We aim to provide every student with an outstanding experience. Our Central Support Service (CSS) offers a range of services including support around mental health from our dedicated Wellbeing Team who support, advise and provide guidance for students on their wellbeing.

**This could include:**

- support for low level concerns or situational stress such as exam anxiety
- provision of an Inclusion Plan which advises on reasonable adjustments
- study assistance support on a one-to-one or small group basis
- signposting and liaising with external specialist services
- mental health first aid for students in distress.

## SUPPORT AVAILABLE TO YOU

**Counselling Team**

We provide a safe and private space for students to openly explore issues they may be experiencing. Counselling sessions normally last around 50 minutes and all information that is discussed is treated confidentially in accordance with the British Association of Counsellors and Psychotherapists (BACP).

**Newcastle College University Centre Teams Channel**

This specially-created channel on Microsoft Teams provides helpful advice for looking after your mental health (which you can access when

you start your degree). As a degree student at Newcastle College University Centre, you will be able to access this channel and get tips on how to look after your mental health during your studies, as well as finding out who you can contact if you ever need extra support.

**Urgent Support**

If you ever feel like you need urgent assistance, we can provide contact details of organisations who can support you when in need. Your wellbeing is important to us, and as a student at Newcastle College University Centre we will do our utmost to ensure that you always feel supported.



# STUDENT LIFE ON CAMPUS

We think it is really important for you to experience all aspects of student life. There are plenty of ways for you to get involved in activities on campus, a chance to make new friends and boost your CV at the same time.



## STUDENTS' UNION

When you enrol onto a degree course at Newcastle College University Centre, you automatically become a member of Newcastle College University Centre Students' Union, an affiliated member of the National Union of Students (NUS). You can apply for a NUS Totum card entitling you to a number of fantastic discounts in shops, restaurants and services nationwide. The Students' Union has a range of officer roles available to you as a student. These officers help with the running of the Students' Union (SU) as a fair and exciting organisation and represent you around LGBT+ issues, disabilities, higher education and welfare. Officers are elected into post annually by students so make sure you look out for the elections, maybe you will be the next Students' Union President. Come and visit our dedicated SU Office in the Parsons Building for more information.

Student welfare is an extremely important part of the work of the Students' Union too. We are here to help and support you in any way possible and both staff and volunteers are on hand to offer advice. We work with a number of external organisations including New Croft Centre, Newcastle City Council, International Newcastle and NECA to help you access support on sexual health, drugs and alcohol, homelessness, LGBT+ issues and mental health. We also work closely with Newcastle College Central Support Team including specialist higher education learning mentors and counsellors to offer you advice and guidance on any issues you may be experiencing.

## FRESHERS' FAIR

The Freshers' Fair is your introduction to undergraduate life at Newcastle College University Centre. It is also a chance to find out what the Students' Union can offer you, as well as discounts you can take advantage of by being an NUS Totum card holder. There are lots of social activities taking place throughout the week and freebies on offer so it's not one to be missed!

## CLUBS AND SOCIETIES

Clubs and societies are a great way to meet new people and get involved in a range of activities. We encourage students to develop ideas and we may be able to support you in starting your own club or society. We also work closely with other Students' Unions in the local area so that you are able to access some of their facilities.

## WORK OUT, RELAX AND UNWIND

As a degree student you'll have free access to our on-site gym, housing a range of cardio and weights machines, perfect for lunch breaks or after your studies. You can also treat yourself to some relaxation time in The Retreat, our beauty salon, which is located in the Lifestyle Academy. A range of treatments are available including facials, eye and nail treatments, waxing, massage and spa treatments. There is also a hair salon on site.

DID YOU KNOW?  
**YOU COULD BECOME A  
STUDENT OFFICER TOO!**





# STUDENTS IN PARTNERSHIP

**Throughout your course you will be part of a vibrant academic community that values research, scholarship and professional practice. Degree courses at Newcastle College University Centre embrace the concept of Students in Partnership and research-engaged teaching and learning. This means you will be offered opportunities to undertake research or research-like activities within your discipline and across the University Centre. A great way to meet new people, make a positive impact on student life and enhance your CV.**

## STUDENT ENGAGEMENT

We actively encourage students to work in partnership with members of staff to enhance the learning experience of all our University Centre students. You will be given the opportunity to take a proactive role in the decision-making process that helps shape the curriculum.

## STUDENTS IN PARTNERSHIP

### Student participation is encouraged through:

- the Student Voice system which enables student representatives to provide feedback from students and to work collaboratively with staff, including the Senior Management Team, to ensure the University Centre provides the best experience for all students.
- Student Fellowships, which are paid opportunities for students, and can include research-led projects, events management and membership of various committees and panels.
- the 360 Project: Inclusivity Council: This council is student-led and creates activities to promote inclusion, diversity, equality and accessibility on campus.

Find out more at [ncl-coll.ac.uk](http://ncl-coll.ac.uk)

**Through a Student Fellowship, you can gain skills and experience beyond the curriculum. Our student fellows can receive up to £1,000 per academic year\* and work on extracurricular enhancement projects in partnership with staff.**

## STUDENT PUBLICATIONS

There are a range of opportunities to become part of our publications before you finish your degree and all of our publications are entirely student-led. **Seven Bridges** is our multi-disciplinary academic journal which provides an opportunity for you to publish research in the form of papers, posters, case studies and abstracts. **Folio** showcases our creative disciplines and publishes a selection of work from across our Creative Industries, featuring original artwork from art and design, photography, illustration and more. Finally, there is **Canny Scran**, which brings you the best of our Culinary Arts students. All of our publications are published annually every summer and each issue is available online and in print.

## STUDENT CONFERENCE

As a student at Newcastle College University Centre you will be able to participate in our annual Higher Education Student Conference. This conference

gives you the chance to develop your presentation skills, showcase your research to fellow students, staff and partners and celebrate your achievements at the end of the academic year.

## EXTERNAL CONFERENCES

Newcastle College University Centre provides opportunities for students to attend and present their work at external conferences. These include the British Conference for Undergraduate Research and the prestigious Posters in Parliament event. Keep a look out for how you can get involved.

## STUDENTS IN PARTNERSHIP

Our Students in Partnership Programme gives you the opportunity to undertake research or similar activities within your discipline and across the University Centre. It also means you are able to make a positive impact on the student experience and contribute to the student community, all whilst gaining valuable employability skills and often a generous bursary.

\*depending on level of involvement



# STUDENT SUPPORT

**Our support services are here to offer advice and support to students when they need it. We are committed to providing an inclusive educational environment and offer support for students to ensure that the University Centre is a safe and positive learning environment for all.**

## LEARNING SUPPORT

The Special Educational Needs and Disabilities (SEND) Team works with students who have a disability, specific learning difference, mental health difficulty or long-term medical condition.

### Support may include:

- provision of an Inclusion Plan which advises on reasonable adjustments
- study assistance support on a one-to-one or small group basis
- support with personal care needs and accessibility
- Disabled Students' Allowances (DSA) advice and guidance
- Alternative Assessment Plans
- exam access arrangements
- support from our Life Skills Hub

- arranging screening and assessments for Specific Learning Differences.

## STUDENT SERVICES

Our Student Services Team provide impartial information, advice and guidance on course, finance and welfare issues such as:

- advice on progression routes
- accommodation options
- individual course and finance advice appointments
- finance and money management advice
- learner support fund assessments, including hardship
- signposting to careers information, advice and guidance
- DBS and Right to Work checks.

Find out more at [ncl-coll.ac.uk](http://ncl-coll.ac.uk)

## ACADEMIC SUPPORT COACHES

We have a highly skilled team of Academic Support Coaches who are there to support you with all your academic needs. You can pop in to see them or book a one-to-one meeting. They can support you with skills such as:

- academic writing skills
- proofreading
- referencing
- critical thinking
- presentation skills.

## LEARNING MENTORS

Learning Mentors can work with you on a wide range of issues including health, wellbeing and signposting to external services and support, including:

- mental health issues
- organisation and time management
- personal issues.

We also provide support for care-experienced students, young adult carers, student parents and pregnant students.

## LIBRARIES TEAM

The Libraries Team offer group workshops and one-to-one academic support on a drop in basis. Topics available include:

- plagiarism and copyright
- essay writing and structuring dissertations
- Harvard referencing
- literature review, research methods and research skills
- revision and exam preparation.

## ON-SITE NURSERY

Newcastle College Day Nursery is our on-campus nursery for children aged 0-5 years, which is rated 'Outstanding' by Ofsted in our most recent inspection. Our stimulating, safe and nurturing

'home away from home' is open Monday to Friday, 8.30am – 5.15pm. To find out more, head to [www.ncl-coll.ac.uk/about-the-college/newcastle-college-day-nursery](http://www.ncl-coll.ac.uk/about-the-college/newcastle-college-day-nursery)

## CAREERS AND EMPLOYABILITY SUPPORT

The HE Careers and Employability Team support students by increasing their confidence and knowledge around their own individual employability and career management skills, whether this is working for an organisation or setting up their own business.

The team can help with:

- developing career plans
- one-to-one support and workshops about career management and employability skills
- how to search for jobs
- CV, cover letter and personal statement guidance
- interview skills.

You will be able to access support and guidance from the HE Careers and Employability Team for one year after graduation too.

**Please contact our Central Support Service (CSS) for more information on the support available:**

[css@ncl-coll.ac.uk](mailto:css@ncl-coll.ac.uk)  
[www.ncl-coll.ac.uk/support/university-centre-support](http://www.ncl-coll.ac.uk/support/university-centre-support)





# STEPPIN' UP TO A DEGREE WITH NEWCASTLE COLLEGE

KYLE TELLS US WHY HE'S  
STEPPIN' UP TO A DEGREE  
AT NEWCASTLE COLLEGE  
UNIVERSITY CENTRE

CLICK ME



Many of our students choose to continue their education with us and study at our University Centre once they have completed their Level 3 qualification. Upon completion they choose to progress their studies to undergraduate level to equip them with enhanced skills and knowledge before they pursue their chosen career.

If you are a current Newcastle College student and successfully meet the published Level 3 entry requirements in an appropriate subject(s), you will be guaranteed a place on a relevant course.

This means you can build on your studies in your chosen area alongside friends and tutors you already know. You will continue to have access to industry-recognised facilities and learn in smaller class sizes, making your experience with us as enjoyable as possible.

**We'd love to see you Step Up with us too.**

If you are currently studying at Newcastle College and wish to apply for a full-time Foundation Degree, Honours Degree (Top-Up) or three-year Honours Degree you can apply to us directly. To find out more and apply visit [www.ncl-coll.ac.uk/steppin-up](http://www.ncl-coll.ac.uk/steppin-up)



## STUDENT PROFILE

The staff here have been the best support network I've ever had. All my tutors have helped me, I can't praise them enough. It's thanks to them that I've been able to achieve what I have so far.

ELLIE CHAMBERS,  
ART AND DESIGN STUDENT

# TUITION FEES AND FINANCIAL SUPPORT

## TUITION FEES

Our tuition fee for full-time undergraduate UK and EU students studying a degree starting in 2025\* will be £9,535 per year. There may be additional costs associated with your course such as field trips, equipment and printing. You can find out what's included in your Tuition Fee on our website and further information will be outlined by your tutor. You can choose to pay your tuition fees upfront or take out a Tuition Fee Loan from the Student Loans Company, which currently defers payment until you earn over £25,000 per year after you graduate. You can apply for student finance by registering your details at [www.gov.uk/student-finance](http://www.gov.uk/student-finance) or alternatively you can apply for student finance on your UCAS application form.

## GOVERNMENT MAINTENANCE LOAN

A Government Maintenance Loan is available to help with your living costs. The amount you can borrow depends on where you live, study and your household income. The maximum Government Maintenance Loan that will be available if you live at home will be up to £8,877 and £10,544 if you are living away from home.\*\*

## NEWCASTLE COLLEGE CASH BURSARY

A cash bursary of £1,000 will be offered to new full-time undergraduate home students paying full fees and who meet certain criteria. Eligibility to receive the bursary will be determined by their entitlement to elements of the Student Loan Company's finance packages (i.e. full Maintenance Loan) and will be revisited using this criteria annually.

The bursary is available for each year of the degree course and will help those students most in need with the costs associated with studying a degree, whether it's for accommodation, course materials or anything else that helps them with their studies.

Travel bursaries are also available for the first year of study for students living two miles or more away from college and is subject to you achieving 90% attendance.

## HIGHER EDUCATION HARDSHIP FUND

The Higher Education Hardship Fund may be available to full-time and part-time students who are experiencing financial disadvantages. We will assess student need for financial assistance before determining whether to award financial support. The funding allocated from the Higher Education Hardship Fund is a discretionary award and is conditional on a minimum attendance of 90%.

## ENGAGEMENT BURSARY

The Engagement Bursary supports our students' engagement with their studies. Students at Level 4 and Level 5 (who meet certain criteria) with a minimum of 90% attendance can apply to receive a £550 cash bursary.

*\*You should expect to pay tuition fees for every year in attendance and be aware these fees may increase annually. On the basis of current Government guidance any increase is unlikely to exceed the increase in inflation by reference to the Retail Price Index (RPI). \*\*Please check [www.gov.uk/studentfinance](http://www.gov.uk/studentfinance) for most up-to-date information on student loans.*

# YOUR JOURNEY TO STUDYING WITH US

1

## MARCH – SEPTEMBER 2024

View our degree courses on our website or via the Course Finder at [ucas.com](http://ucas.com). You can also visit one of our monthly Open Events or you can contact us directly if you have any queries by emailing [undergraduate@ncl-coll.ac.uk](mailto:undergraduate@ncl-coll.ac.uk)

2

## SEPTEMBER 2024

UCAS begins to accept applications for undergraduate courses starting in September 2025. We also begin to accept applications from our current students directly.

3

## 29 JANUARY 2025

The deadline for applications made through UCAS is 29 January 2025. However, you can apply directly to us after this date. Visit our website after this date for further information.

4

## JANUARY – MARCH 2025

If you've applied for a course before the UCAS January deadline, you will receive a response from us before the end of March. Some of our degree courses require you to attend an interview or an audition or produce a portfolio before an offer is made.

5

## MARCH 2025

Begin to apply for your student finance. Further information can be found at [gov.uk/studentfinance](http://gov.uk/studentfinance)

6

## MARCH – JULY 2025

When you accept your offer you will be sent more information about your studies with us. We will tell you everything you need to know about starting your course.

7

## JULY – AUGUST 2025

If we have made you a conditional offer based on you achieving a certain level of grades, and you meet these requirements, we will confirm your place.

8

## SEPTEMBER 2025

Your exciting journey with Newcastle College University Centre begins!

# A DEGREE THAT FITS AROUND YOU

## PART-TIME STUDY

We offer a range of study modes which means you can study in a flexible way that fits around your current commitments. So whether you are looking to upskill in your current role, or retrain to pursue a new career, you can study in a way that best suits your needs.

### EVENING STUDY

This mode of study is ideal for those who may be working full-time but would like to study a degree in the evening. Classes are typically three hours in duration and twice a week.

### MODULE STUDY

We understand you may not be able to commit to studying a full Foundation or Honours Degree, but you may wish to study certain modules of a programme. This mode of study allows you to select the modules that are most relevant to your continuous professional development (CPD).

### DAY-RELEASE

This enables those who are in full-time employment to study a degree one day a week.

### COMPETITIVE TUITION FEES

Our tuition fee for a part-time undergraduate degree starting in 2025\* is £4,760 per year.

If you are studying your first degree you are likely to qualify for a Tuition Fee Loan to help cover the cost. This loan is not based on household income and there's no upper age limit for applying. To check your eligibility visit [www.gov.uk/studentfinance](http://www.gov.uk/studentfinance)

### HOW TO APPLY

Applications for part-time degrees are made through our website and not UCAS. You will be asked to include a personal statement, details of previous employment history and give details of a referee. Once you have applied, you will be contacted by a course team member to discuss your interest further.

**For more information on our courses and to apply go to: [www.ncl-coll.ac.uk/part-time-degrees](http://www.ncl-coll.ac.uk/part-time-degrees)**

*\*You should expect to pay tuition fees for every year in attendance and be aware these fees may increase annually. On the basis of current Government guidance any increase is unlikely to exceed the increase in inflation by reference to the Retail Price Index (RPI).*

# USE YOUR EXPERIENCE

Recognise Me is a unique online service that considers your previous work experience and skills and analyses whether you may be exempt from studying certain modules of your degree, saving you valuable study time.

The service allows us to assess whether your experience in your job, previous qualifications or training can be translated into module credits (the elements that make up a degree course).

## RECOGNITION OF PRIOR LEARNING (RPL)

The process of linking your previous skills and experience to university credit is referred to as Recognition of Prior Learning (RPL) and gives you the opportunity to gain recognition of your achievements outside of the classroom. If you would like to make an RPL claim, your tutor will inform you of the process.



### ALUMNI PROFILE

What makes Newcastle College University Centre more competitive is that they also provide technical teaching by simulating hangar or workshop experience, so whenever you enter industry you're not overwhelmed. You've already got all the skills needed to communicate using technical language all your professional peers will understand.

ALEX KING,  
FDA AERONAUTICAL ENGINEERING



# EDUCATION AND TEACHER TRAINING

**Newcastle College University Centre has an excellent reputation for teacher training. We offer both full-time and part-time courses that fully meet the requirements for Initial Teacher Training for the education of people aged 14 years and over. Our Diploma of Higher Education and PGCE programmes are mapped to national standards too.**

## DIPLOMA OF HIGHER EDUCATION: TEACHING IN FURTHER EDUCATION

This course is aimed at those wishing to pursue a career in teaching, offering you the opportunity to work towards a professional teaching qualification. You will increase your knowledge of various teaching approaches and techniques as well as developing the skills and confidence you need to become a competent and reflective teacher in further education. This programme involves a minimum of 150 hours of teaching practice and can be studied part-time over two years.

## PROFESSIONAL GRADUATE CERTIFICATE IN EDUCATION: TEACHING IN FURTHER EDUCATION

Our Level 6 programmes are aimed at graduates who are either currently in or seeking to pursue a career in the post-compulsory education sector. These programmes have been informed by the most recent developments in educational research and government policy and will help you to develop the skills you need to become an effective teacher and developing postgraduate-level research skills. These programmes involve a minimum 150 hours of teaching practice and can be studied full-time (one-year) or part-time (two years). We offer this degree for teachers of all courses, as well as having three specialist PGCE programmes for those interested in English, Maths or SEND.



## CONTINUOUS PROFESSIONAL DEVELOPMENT (CPD)

We offer two degree courses aimed at those who are already working within the education sector and wish to broaden their professional knowledge.

## BA (HONS) EDUCATION AND PROFESSIONAL DEVELOPMENT (TOP-UP)

This course offers a progression route from our Foundation Degree programmes and other Level 5 post-compulsory teaching qualifications. It is aimed at teaching professionals and managers working in the education sector.

The course has a wide variety of modules which provide opportunities to research specialist areas across a range of educational contexts. It allows education professionals to develop in-depth knowledge and a critical understanding of educational research and policy, to apply principled approaches to researching professional environments and to advance their professional practice. This programme is studied on a part-time basis over two years.

## MED EDUCATION AND PROFESSIONAL DEVELOPMENT

This postgraduate programme aims to equip educational professionals with the skills to conduct independent research relating to a particular area of study or interest in their working environment or the wider education sector. Undertaking this programme has enhanced the career paths of past

students. Core modules develop students' criticality and research skills whilst elective modules allow opportunities to investigate specialist areas. The course is aimed at teachers, teacher trainers, managers, administrative and service personnel. This programme is studied on a part-time basis over two years.

## STUDENT FINANCE

All of our higher education teaching programmes are eligible for funding from the Student Loans Company, even if you have already had a loan to support previous study. You may also be able to access subject specialist bursaries from the Department for Education to support your study.

## PLACEMENTS

Our Diploma and PGCE programmes involve a minimum of 150 hours of teaching practice over the duration of the course. These placements provide invaluable practical experience whilst you study. Our students secure teaching placements in colleges, schools and sixth forms, higher education institutions and universities, voluntary and community learning, professional education and training, prison and probation services and independent training providers.





## PROFESSIONAL DEVELOPMENT SUPPORT

We have a dedicated member of our team who liaises with students and employers to help secure teaching placements. Students are guided and encouraged throughout the course by tutors and mentors. We hold regular Teacher Recruitment Events to support our graduate teachers into employment and to secure placements for students due to start teaching programmes. We have strong links with employers and these events are well attended by local employers. We also invite all of our students to Professional Development Events throughout their course giving them the opportunity to widen their knowledge of the sector, take part in workshops and gain sector insight through guest speakers.

## PROGRESSION

Our students often secure paid teaching hours whilst studying their course. Our graduates have

gone on to successfully secure employment at schools and sixth forms, colleges and higher education.

## HOW TO APPLY

All full-time and part-time applications need to be made online on our website and **not through UCAS**. All applicants will be invited to attend an interview to complete group tasks and individual writing tasks. We spend time with all of our applicants to ensure you join the course that is most suited to your educational background and career goals.

**Apply online:**  
[www.ncl-coll.ac.uk/nse](http://www.ncl-coll.ac.uk/nse)

**Contact us:**  
If you would like to find out more information about our courses please contact our team:  
**0191 200 4565**  
[nse@ncl-coll.ac.uk](mailto:nse@ncl-coll.ac.uk)  
[www.ncl-coll.ac.uk/nse](http://www.ncl-coll.ac.uk/nse)

Find out more at [ncl-coll.ac.uk](http://ncl-coll.ac.uk)

# POSTGRADUATE STUDIES

**At Newcastle College University Centre we do not just offer undergraduate degrees, Certificates in Higher Education and Degree Apprenticeships. We offer flexible, affordable and career-enhancing postgraduate degrees too.**

Whether you have studied with us before or are joining us for this next step in your life, you will have access to student support, our strong industry links and our commitment to an education that makes you work-ready.

We offer postgraduate courses in Art and Design, Business, Childcare, Computing and Digital Arts, Education and Teaching and Health and Social Care. You will receive high-quality practical education in a dedicated higher education college setting. If you have thought about advancing your undergraduate degree and want to build your industry-ready skills, a postgraduate degree with Newcastle College University Centre is for you.



### STUDENT PROFILE

The modules on my course allowed me to expand my ideas by linking up with different professionals for each module. That collaborative spirit meant that I wasn't just developing my own knowledge and understanding, but finding new ways to explore my concept, which helped me to develop not just as a student and designer, but as a person too.

STEPHANIE THOMPSON,  
MA CREATIVE AND PROFESSIONAL  
PRACTICE (VISUAL ARTS) STUDENT

FIND OUT MORE ABOUT  
OUR POSTGRADUATE  
DEGREES AT  
[WWW.NCL-COLL.AC.UK/  
POSTGRADUATE](http://WWW.NCL-COLL.AC.UK/POSTGRADUATE)

# INTERNATIONAL

**At Newcastle College University Centre we are delighted to welcome international students to study with us.**

When you study with us you will be welcomed by our dedicated International Team who is committed to offering you a personalised student experience in a friendly and supportive environment.

We pride ourselves on the support we provide for our international community. Our team will help you to adjust to life away from home and will provide welfare advice and guidance throughout your studies.

- application advice including issuing Confirmation of Acceptance for Studies (CAS)
- pre-departure information
- accommodation advice
- visa application advice
- welcome and induction
- social activities
- information on living in Newcastle
- help with registering with a local doctor
- support with opening a bank account
- information on council tax.

If you are an international student you do not need to apply through UCAS. Please contact our International Team.

**[international@ncl-coll.ac.uk](mailto:international@ncl-coll.ac.uk)  
(+44) 191 226 6323**



Find out more at [ncl-coll.ac.uk](http://ncl-coll.ac.uk)

FIND OUT MORE ABOUT  
HOW TO APPLY

**CLICK ME**



## STUDENT PROFILE

As an international student studying abroad, you just learn a lot more about life - about what life means to you personally and it can only benefit the way you look at the world for the next chapter of your life. I will never regret taking the opportunity to study at Newcastle College University Centre.

DECLAN KATER,  
ART AND DESIGN STUDENT



# GRADUATION

After years of study it is only right that you get to celebrate your achievement with friends and family. Every summer, Newcastle Civic Centre opens its doors to hundreds of learners who enter as students and leave as graduates.

We take great pride in giving our students the skills and knowledge they need for a successful career in industry. You can join our community too.



**CLICK ME**

TO FIND OUT WHAT HAPPENS AT OUR GRADUATIONS





# HOW TO APPLY

If you are not currently a student at Newcastle College and wish to apply for a full-time CertHE, Foundation Degree, Honours Degree or Honours Degree (Top-Up) with us you will need to make an online application at [ucas.com](https://ucas.com)

## UCAS APPLICATIONS

The advantages of online UCAS applications are:

- support and advice is available from [www.ucas.com](https://www.ucas.com)
- it can be used by students in schools and colleges and those applying independently
- online applications are processed within 24 hours then sent to us.

## HELP WITH YOUR APPLICATION

If you are at school or college, members of our Student Services Team may be able to help you with the online application process.

Find out more at [ncl-coll.ac.uk](https://ncl-coll.ac.uk)

Alternatively, you can contact UCAS directly:

0371 468 0468  
[enquiries@ucas.ac.uk](mailto:enquiries@ucas.ac.uk)

When you apply, you will need the UCAS code for your chosen course e.g. N200 (this is detailed on each course overview within this prospectus). You can also find this information at [www.ucas.com](https://www.ucas.com)

You will also need Newcastle College University Centre's institution name and code.

THE INSTITUTION NAME IS: **NCAST**  
THE INSTITUTION CODE IS: **N23**



## NEWCASTLE COLLEGE STUDENTS

If you are currently studying with us and wish to apply for a full-time Foundation Degree, Honours Degree or Honours Degree (Top-Up), you can apply to us directly. All you need to do is complete a short form on our website and a member of the team will be in touch to discuss your application and the next steps. Your tutor can also help you apply.

## PART-TIME APPLICANTS

If you would like to study one of our degree courses on a part-time basis you can also apply directly to us. Simply go to: [www.ncl-coll.ac.uk/part-time-degrees](https://www.ncl-coll.ac.uk/part-time-degrees)

## INTERNATIONAL STUDENTS

International students can apply directly to our International Office. You will need to complete an International Application Form and submit copies of your passport, previous visas, academic documents and evidence of English language proficiency. Our International Team will support you through this process, please contact [international@ncl-coll.ac.uk](mailto:international@ncl-coll.ac.uk)

## NEED ASSISTANCE?

If you require more information on our degree courses, need help with making your application or require this guide in an alternative format then please contact us:

0191 200 4000  
[enquiries@ncl-coll.ac.uk](mailto:enquiries@ncl-coll.ac.uk)

# AESTHETICS AND MAKE-UP

**The aesthetics and make-up industry makes millions each year and is growing rapidly to meet the demands of evolving trends and emerging techniques. As an Aesthetics and Make-Up student you will know how important it is to have the right skills for industry and our degrees at Newcastle College University Centre are designed to help you stand out from the crowd.**

By studying with us, you will be joining a unique and highly-skilled group of undergraduates ready to take the aesthetics and make-up industry to the next level.

Our degrees have been designed to provide you with higher-level and specialised skills that are needed within the advanced aesthetic and make-up industry.

## STUDY WITH US AND YOU WILL:

- benefit from specialist industry training from leading providers.
- have access to specialist equipment to develop your technical skills.
- be taught by industry-experienced tutors who have specialised in clinic management, spa management and aesthetic practice.
- attend industry exhibitions to enrich your learning.
- be assessed in a variety of ways including case studies, presentations, reports and practicals.



**AESTHETICS AND MAKE-UP STUDENTS STUDY IN OUR LIFESTYLE ACADEMY**

## JOBS DIRECTLY RELATED TO AESTHETICS AND MAKE-UP QUALIFICATIONS INCLUDE:

- Aesthetician
- Advanced Make-Up
- Business Owner
- Clinic Manager
- Freelance Artist
- Medical Micropigmentation Professional
- Salon Owner
- Semi-Permanent Make-Up
- Spa Manager
- TV, Movie and Theatre Hair and Make-Up.



**CLICK ME**

TAKE A LOOK AT OUR  
AESTHETICS AND MAKE-UP  
DEGREES ONLINE

## FdA ADVANCED TECHNIQUES IN MEDIA AND SEMI-PERMANENT MAKE-UP

**DURATION: 2 YEARS**

**ENTRY REQUIREMENTS: 32-64 UCAS POINTS**

**UCAS CODE: BN34**

This Foundation Degree in Advanced Techniques in Media and Semi-Permanent Make-Up degree is an ideal course for those with a passion for media and theatrical make-up and who are seeking to gain advanced semi-permanent make-up skills. This course will provide you with knowledge and skills to effectively manage the quality of services offered in the industry, the advanced capabilities of providing a range of progressive treatments and expertise in the field of advanced make-up. You will work with high-quality, specialised equipment and learn highly-advanced skills which will enhance your career prospects in the make-up industry. During this degree you will also work with industry-renowned brands to develop a unique skill set in cosmetic, theatrical and reconstructive make-up.

## FdA AESTHETIC PRINCIPLES AND CLINICAL PRACTICE

**DURATION: 2 YEARS**

**ENTRY REQUIREMENTS: LEVEL 3 BEAUTY THERAPY QUALIFICATION ALONGSIDE FACIAL AND BODY ELECTROTHERAPY**

**UCAS CODE: BN32**

Are you looking to enhance your practice within the non-medical aesthetic sector as a practising Aesthetician? This degree has been developed with employers including SK:N, Laser Clinics UK, Myobody Aesthetics and Transform to ensure it reflects what skills are required to be employed within the non-medical aesthetics industry. You will study the theory behind aesthetic procedures and gain an understanding of why they are carried out in the way that they are to shape your clinical practice. You will cover topics such as laser and pulsed light for hair removal and skin rejuvenation, microneedling for collagen synthesis, scarring and pigmentation and superficial chemical peels for a range of skin concerns.

## INDUSTRY SUPPORTERS

**DERMAQUEST**

**KRYOLAN**  
PROFESSIONAL MAKE-UP

### BA (HONS) ADVANCED PRINCIPLES IN MEDIA MAKE-UP (TOP-UP)

DURATION: 1 YEAR

ENTRY REQUIREMENTS: FOUNDATION DEGREE OR EQUIVALENT IN RELATED AREA

UCAS CODE: BN35

Whether your dream is to work in media and theatrical make-up or you're interested in introducing technology into your prosthetic work, this is the course for you. You will build expertise in making bespoke wigs from scratch, a skill which is highly sought-after within the film and theatre industry. Within the advanced prosthetics module you will focus on advanced sculpting skills as well as creation of full-face prosthetics, a lucrative and increasingly sought-after skill. 3D sculpting and character design will focus on exploring various attributes that are necessary to create a believable character and translate visual research into a 3D character using organic modelling techniques with a digital sculpting tool. This will equip you with the necessary skills to begin your journey within the media sector.

### BA (HONS) ADVANCED SKIN TECHNIQUES (TOP-UP)

DURATION: 1 YEAR

ENTRY REQUIREMENTS: FOUNDATION DEGREE IN A RELEVANT AREA WITH PREVIOUS EXPERIENCE OF CHEMICAL PEELS, LASER AND PULSED LIGHT THEORIES, PHYSIOLOGY OF THE SKIN AND RESEARCH METHODS

UCAS CODE: BN33

Are you currently working within the non-medical aesthetic industry and looking to further your practice? This is an exciting programme that has been developed to expand from the Foundation Degree in Aesthetic Principles and Clinical Practice, enhancing theoretical and vocational skills within the industry. Throughout this programme you will learn advanced procedures such as medium strength chemical peels, mixed modalities and advanced laser procedures such as tattoo removal, with theoretical principles to support. The intent of the programme is to expand on the underpinning knowledge of an aesthetician to ensure that you are competent to treat a wider range of complex conditions.

Find out more at [ncl-coll.ac.uk](http://ncl-coll.ac.uk)



#### STUDENT PROFILE

The jobs market is really competitive now, so having the extra skills and knowledge that comes from my degree course has really helped me personally. It's also great to be learning from people who are experienced in the industry and build the skills I need to succeed in my career.

CRAIG WARNES,  
AESTHETICS AND MAKE-UP STUDENT

# ART AND DESIGN

**As a creative, you will know how important it is to study in an environment which will challenge and support you to thrive.**

With our Art and Design degrees you will be provided with a creative community offering you a safe space to explore ideas, develop your craft and collaborate with industry leaders.

Depending on your degree, you will have access to industry-standard equipment such as CLO 3D, digital fabric printing equipment, a laser cutter, a 3D Printer, screen printing facilities, CNC router and vinyl cutter. You will also become a proficient user of the Adobe Suite, specialising in InDesign, Photoshop and Illustrator.

Our creative degrees will set you up for a rewarding career in the industry you love. Our industry partners that continue to work with, and support, our students to succeed include Jack Nockles from AND+ Studios, Louise Weeks from Trend Bible, renowned Fashion Stylist Jo Shippen and famed Surface Designer Charlotte Gaisford. If you are a forward-thinker who wants to find your voice as an artist or designer, you belong with us.



**CLICK ME**

TAKE A LOOK AT OUR  
ART AND DESIGN  
DEGREES ONLINE

Find out more at [ncl-coll.ac.uk](http://ncl-coll.ac.uk)

**STUDY WITH US AND YOU WILL:**

- have the opportunity to undertake exciting work experiences and/or placements with regional, national and international organisations.
- be taught in smaller class sizes by industry-experienced tutors who know what it takes to succeed.
- work on live briefs set by employers and benefit from industry insight from guest speaker lectures.
- have the chance to go on national and international field trips to enrich your studies.
- exhibit your work to industry specialists at end of year shows.



## JOBS DIRECTLY RELATED TO ART AND DESIGN QUALIFICATIONS INCLUDE:

- Art Curator
- Art Management
- Artist
- Buyer
- Designer/Maker
- Fashion Designer
- Fashion Retail
- Interior Designer
- Merchandiser and Stylist
- Multi-Disciplined Designer
- Product Designer
- Textile and Surface Designer
- Visual Merchandiser.

## FdA FASHION MARKETING AND COMMUNICATION

**DURATION: 2 YEARS**

**ENTRY REQUIREMENTS: 64 UCAS POINTS**

**UCAS CODE: W234**

If you are looking for a career in the fast-paced fashion world, this Fashion Marketing and Communication degree is for you. This degree will prepare you for a career in the fields of fashion retail, PR and brand marketing, buying, styling and creative direction. Working extensively with industry, you will learn skills in visual merchandising, branding and corporate image, range planning and distribution, and work on live briefs from local and national specialists in the sector such as Darkus Magazine, Sally Angnard and Second Skin. This uniquely designed course is ideal if you are interested in any of these areas of fashion, or if you are already working within the industry.

## FdA INTERIOR AND SPATIAL DESIGN

**DURATION: 2 YEARS**

**ENTRY REQUIREMENTS: 64 UCAS POINTS**

**UCAS CODE: W250**

Are you interested in a career in the design industry? Would you like to create your own designs? This Interior and Spatial Design degree will give you industry-aligned design skills and knowledge that respond to the changing shape of design. The course is unique in that you will learn a range of vocationally-focused design principles and practical skills. You will become proficient with equipment such as a laser cutter and digital applications like Sketchup and the Adobe Suite as well as having the opportunity to develop your own commercial and residential schemes.

## FdA SURFACE DESIGN PRACTITIONER

**DURATION: 2 YEARS**

**ENTRY REQUIREMENTS: 64 UCAS POINTS**

**UCAS CODE: W231**

Are you looking for a specialist course focusing on design for printed and constructed textiles? Throughout this degree, you will develop your own creativity and learn about the history, culture and sustainability of the industry. This Foundation Degree will allow you to find and express your personal philosophy of textiles and surface design and develop your own signature style. You will build your skills in areas such as drawing and painting, CAD surface design, hand and machine embroidery and fabric manipulation. Learning from industry-experienced tutors, you will get the opportunity to work with local and national companies such as Moonpig, Ostroy and Vamos using a range of traditional and contemporary techniques.



ART AND DESIGN STUDENTS STUDY  
IN OUR MANDELA BUILDING  
(SCHOOL OF ART AND DESIGN)

### FdA FASHION DESIGN AND INNOVATIVE TECHNOLOGIES

**DURATION: 2 YEARS**

**ENTRY REQUIREMENTS: 64 UCAS POINTS**

**UCAS CODE: W235**

During this degree you will develop an advanced knowledge of the fashion industry and, working with expert tutors, you will develop your own signature style and the essential skills to stand out to employers. You will become experienced using industry-standard tools like CAD which is used for design, pattern cutting, garment construction and product development. You will also gain practical experience in research, illustration, developing creative ideas, selecting fabrics and planning shop reports. This degree is hands-on and you will have a chance to undertake work experience as well as take part in national and international trips to places like Paris, New York and London.

### BA (HONS) FINE ART

**DURATION: 3 YEARS**

**ENTRY REQUIREMENTS: 64 UCAS POINTS**

**UCAS CODE: W100**

If you have a passion for Fine Art or Art and Design, this degree will allow you to explore your interests and build the skills you need for a successful career in the industry. Through practical studio sessions, you will become proficient in metal, ceramic, traditional and digital print, lensbased and sewing room skills. You will learn traditional and contemporary practices, such as drawing, painting, sculpture, installation and digital practice. As this art degree focuses on showcasing the work you create, you will be given the opportunity to exhibit throughout your time as a student and work with industry to develop external exhibition experience.

Find out more at [ncl-coll.ac.uk](http://ncl-coll.ac.uk)

### BA (HONS) INTERIOR AND SPATIAL DESIGN (TOP-UP)

**DURATION: 1 YEAR**

**ENTRY REQUIREMENTS: FOUNDATION DEGREE OR EQUIVALENT IN A RELATED AREA**

**UCAS CODE: W252**

This degree will enable you to develop your management and project development skills, preparing you for life in industry. Learning from industry-experienced tutors, you will research and design your own project brief that responds to the needs of the sector and the changing shape of the interior, architectural and design industries. This design degree will give you the additional skills and knowledge you need to get you ready for a career in industry. Developed alongside employers, this degree will enable you to work on live briefs, giving you experience of industry demands and hands-on experience of the art and design sector.

### BA (HONS) DESIGN PRACTICE (TOP-UP)

**DURATION: 1 YEAR**

**ENTRY REQUIREMENTS: FOUNDATION DEGREE OR EQUIVALENT IN A RELATED AREA**

**UCAS CODE: W212**

If you're looking for a degree where you can design your own future, this is the course for you. During the BA (Hons) Design Practice (Top-Up) degree programme you will develop your own unique professional practice, pursuing an individual pathway into the industry. Learning from industry-experienced tutors, you will research and design your own project brief, linking closely to career aspirations and the needs of the industry. You will have the opportunity to undertake work experience with businesses such as O, Mario Minchella Architects and Master Debonair. You will have access to specialist industry equipment throughout your design degree, including an industrial sewing room, digital and traditional print room, 3D workshops and Adobe Suite programmes.

#### INDUSTRY SUPPORTERS

**TrendBible**

**JO SHIPPEN**

**AND+ STUDIOS LTD**



#### STAFF PROFILE

I've worked here for almost 20 years so there have been many proud moments such as designing the HE Hub (a dedicated higher education space) with my students, to working with amazing industry professionals on live projects. Every year the biggest highlight is seeing my students graduate with outstanding portfolios of work and setting off on their careers.

DAN CIVICO, LECTURER

# AVIATION

The world of aviation is constantly evolving and demand for highly-skilled graduates is increasing. If you are looking for a fulfilling career in aircraft maintenance engineering, we have a degree for you.

As an Aviation student you will benefit from studying at our specialist Aviation Academy. Based at Newcastle International Airport, you will have access to a wide range of industry-standard training aircraft and resources. Our aircraft include a fully functional Beechcraft Premier 1 business jet, a BAE Jetstream 3100 turbo-prop, a Piper Aztec and a Boeing 737-200. Training is further supported with resources such as our Flight Training and Navigation simulators plus a variety of gas turbine engines including a Rolls Royce RB-211 Turbopfan.

Our Aircraft Maintenance Engineering degree will provide you with hands-on experience and our tutors are industry specialists. We pride ourselves on having tutors who have real-world experience of the industry you are passionate about and who will help send your future soaring.



AVIATION STUDENTS STUDY IN OUR AVIATION ACADEMY

## STUDY WITH US AND YOU WILL:

- have the opportunity to undertake industry visits to enrich your studies.
- be taught by industry-experienced tutors who know what it takes to succeed.
- really get to know your classmates through learning in smaller groups.
- be assessed in a variety of ways including projects, written assessments and presentations.
- build valuable employer contacts through networking events.
- develop high-standard hand skills through the practical course content.

DID YOU KNOW?  
WE'VE RECENTLY INVESTED IN A BEECHCRAFT PREMIER 1 BUSINESS JET!

Find out more at [ncl-coll.ac.uk](http://ncl-coll.ac.uk)

## JOBS DIRECTLY RELATED TO AVIATION QUALIFICATIONS INCLUDE:

- Aircraft Interior Fitter
- Aircraft Planning
- Airworthiness Surveying
- B1.1 Licenced Aircraft Engineer
- Licenced Aircraft Mechanic
- Technical Publication Authoring
- Unlicenced Aircraft Mechanic.

## BSc (HONS) AIRCRAFT MAINTENANCE ENGINEERING

DURATION: 3 YEARS

ENTRY REQUIREMENTS: 80 UCAS POINTS

UCAS CODE: 4Q58

This Aircraft Maintenance Engineering degree is the only degree of its kind in the North East and the course content is in line with the UK Civil Aviation Authority (UK CAA) Part 66 category B1.1 Aircraft Maintenance Engineering license syllabus. You will be taught aerodynamics, aircraft systems and maintenance practices by tutors who have many years of experience in aircraft maintenance engineering as well as the military. You will study at Newcastle College Aviation Academy, a Part 147 training facility, audited and approved by the UK Civil Aviation Authority (CAA) based at Newcastle International Airport.



## STAFF PROFILE

In my 10 years at Newcastle College I have seen many students go on to achieve great things. I love using the experiences I have had working in the Royal Air Force to inspire the next generation of aircraft engineers.

JIM KING, CURRICULUM LEADER



CLICK ME

TAKE A LOOK AT OUR AVIATION DEGREE ONLINE

## INDUSTRY SUPPORTERS

BRITISH AIRWAYS

The Aviation Academy has established partnerships with Shortern Group, British Airways, Carbon60 and Virgin Atlantic who will interview and aptitude test our Level 6 students before selecting for employment.

# BUSINESS

**Whether you want to strike out in business on your own, or work with global companies, start-ups or not-for-profit organisations, our business courses give you the ability and expertise to accelerate your career and gain a solid grounding in how to run a successful and sustainable business.**

Studying Business at Newcastle College University Centre will enable you to gain the knowledge and skills necessary to be a great business all-rounder. You will study a wide range of local and global business issues, developing key transferable skills such as strategic thinking, commercial problem solving and leadership. Each unit focuses on the theoretical knowledge, professional expertise and work-based learning relevant to a variety of areas including management, human resources, marketing, accounting, business strategy and business law.

Our tutors are industry-experienced and know how businesses work in practice, sharing the experience of real-world problems and solutions to enhance your learning.

## INDUSTRY SUPPORTERS

**elanders**  
U K

**BARCLAYS**

### STUDY WITH US AND YOU WILL:

- be taught by industry-experienced tutors who know what it takes to succeed.
- benefit from the collaboration that comes from smaller class sizes.
- graduate with additional qualifications accredited by professional bodies alongside your studies to enhance your employability.
- benefit from industry expertise through our guest lecture series.
- be assessed in a variety of ways including case studies, workshops, reports, portfolios and presentations.
- gain the practical experience needed to impress potential employers.
- have access to a wide range of academic and pastoral support to help you succeed.



**CLICK ME**

TAKE A LOOK  
AT OUR BUSINESS  
DEGREES ONLINE

### JOBS DIRECTLY RELATED TO BUSINESS QUALIFICATIONS INCLUDE:

- Business Adviser
- Business Manager
- Finance Manager
- HR Manager
- Marketing Manager
- Office Manager
- Project Manager
- Team Leader.

### FdA BUSINESS MANAGEMENT



DURATION: 2 YEARS

ENTRY REQUIREMENTS: 64 UCAS POINTS

UCAS CODE: N190

A Business Management Foundation Degree from Newcastle College University Centre will give you the skills and knowledge you need to build a strong foundation for future success within the private, public and not-for-profit business sectors. This two-year degree will not only develop your ability to transform initial business ideas and concepts into innovative campaigns, but you will also work on live briefs from a variety of businesses to better understand the challenges of operating within a dynamic business environment.

This course has been designed in collaboration with local and national employers to ensure that the knowledge and employability skills that you gain will give you the edge when it comes to securing your first graduate job. You will cover the main areas of business including finance, marketing, human resources and leadership as well as specialist modules to give you a competitive edge in your career.



**BUSINESS STUDENTS STUDY IN OUR TREVELYAN BUILDING**

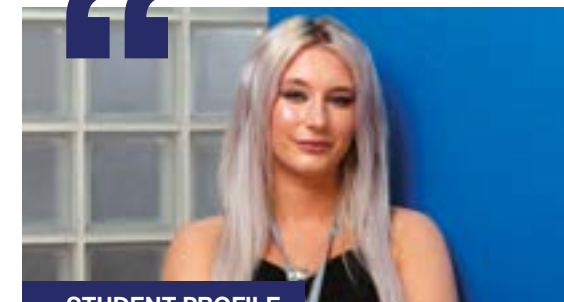
### BA (HONS) BUSINESS MANAGEMENT (TOP-UP)

DURATION: 1 YEAR

ENTRY REQUIREMENTS: FOUNDATION DEGREE OR EQUIVALENT IN A RELATED AREA

UCAS CODE: N200

This BA (Hons) Business Management (Top-Up) degree will develop your individual management and business acumen, getting you ready for life in industry. You will cover a range of factors affecting businesses in the current climate, such as what drives firms to develop and grow, marketing techniques, the challenges of management, the impact of digital technologies, the challenges of leading organisations and the ethical standards of businesses. You will cover many key themes during this degree including entrepreneurship, ethical management, research skills and change management, enabling you to have the well-rounded knowledge and skills you need in the modern world of business.



### STUDENT PROFILE

Studying here has opened my eyes to the employment opportunities available to me, and helped me decide my future specialisms. I've also learnt life skills, like how to write academically and how to manage business finances effectively. I've also become more confident about going out and looking for job roles, since I know I have the skills and experience to support my applications thanks to my time at Newcastle College University Centre.

GEORGIA O'NEILL,  
BUSINESS STUDENT

# CHILDCARE

## INDUSTRY SUPPORTERS

Newcastle  
City Council

Percy Hedley  
FOUNDATION

## Providing opportunities and developing the skills and knowledge of children and young people is something that you are very passionate about.

With a Childcare degree at Newcastle College University Centre, you will gain the skills you need to work with children in a range of environments, such as schools, early years' settings, youth centres and outreach centres.

If you are passionate about the development of children and young people and see your career in an industry that really makes a difference, our childcare degrees will help you take that next step.

### STUDY WITH US AND YOU WILL:

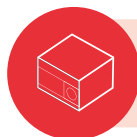
- have access to our childcare training rooms, designed to train students in early years' settings and school age childcare.
- undertake a work placement to develop your personal and professional skills.
- benefit from industry expertise through our guest lecture series.
- work on live projects set by employers to give you an insight into your chosen sector.
- learn in smaller class sizes for more one-to-one tutor support.
- be taught by industry-experienced tutors who know what it takes to succeed.
- be assessed in a variety of ways including projects, examinations, reports and presentations.



### STAFF PROFILE

I have worked in the childcare sector for over 15 years as a Nursery Manager, SENCo and a Safeguarding Lead. Over this period, I have supported students within the sector to gain skills, experiences and knowledge which supported their placement experiences.

SONIA GRAY, LECTURER



CHILDCARE STUDENTS  
STUDY IN OUR TEACHING  
DEVELOPMENT CENTRE

### JOB'S DIRECTLY RELATED TO CHILDCARE QUALIFICATIONS INCLUDE:

- Counsellor
- Family Support Worker
- Learning Mentor
- Nursery Manager
- Social Worker
- Special Educational Needs Co-ordinator
- Teacher
- Teaching Assistant
- Youth Worker.



### STUDENT PROFILE

My degree has definitely given me the experience, the knowledge and the skills I need to progress onto my employment goals. Thanks to the placement I secured through the University Centre, it's also given me the experience of working within a classroom and seeing how the day-to-day life of a primary school class plays out.

I honestly couldn't ask for more from the University Centre staff, they've all been so helpful across the board in helping me to prepare for my future employment and to figure out my long-term career path as much as I can.

GEMMA THOMPSON,  
CHILDCARE STUDENT

### FdA CHILDREN AND YOUNG PEOPLE



DURATION: 2 YEARS

ENTRY REQUIREMENTS: 64 UCAS POINTS

UCAS CODE: L590

This degree in Children and Young People will open up a range of career opportunities for you within schools, early years environments, youth work, outreach and working with children with additional needs. If you are passionate about working with children and child development, this degree is the perfect platform to a rewarding career. You will cover a variety of topics such as child development, safeguarding and the National Curriculum, all from tutors with many years of experience working in the sector.

### BA (HONS) CHILDREN AND YOUNG PEOPLE (TOP-UP)

DURATION: 1 YEAR

ENTRY REQUIREMENTS: FOUNDATION DEGREE OR EQUIVALENT IN A RELATED AREA

UCAS CODE: L591

This Children and Young People degree will allow you to build on the professional skills and knowledge you gained at Foundation Degree level. It is also the next step towards a PGCE qualification if you are looking to go into teaching. You will be committed, motivated, be passionate about working with children and want to make a positive impact on their development. You will cover topics such as safeguarding, young people in society and equality and diversity, learning from tutors who have worked in a variety of roles in nurseries, schools and education and youth settings. You will also develop enhanced research skills by completing a dissertation on an area of your choice.



## CLICK ME

TAKE A LOOK  
AT OUR CHILDCARE  
DEGREES ONLINE



# COMPUTING

**The computing and digital technologies industry is one of the most fast-paced and evolving industries in the world. As a Computing student, you will be creative, technical and know how to use your skills in a competitive field. Throughout your studies you will use your analytical, logical, creative and problem-solving skills to build, design and test networks, software, games technologies and digital solutions.**

Our Computing degrees have been designed alongside industry specialists, giving you a critical insight into computing in the working world. Learning from industry-experienced tutors, you will build practical and analytical skills, readying you for a rewarding and exciting career in the industry you love.



**DID YOU KNOW?  
WE'VE RECENTLY INVESTED  
IN A 3D POWERWALL!**



**COMPUTING STUDENTS  
STUDY IN OUR  
MANDELA BUILDING**

## STUDY WITH US AND YOU WILL:

- have the opportunity to undertake exciting placements with regional, national and international organisations.
- be taught in smaller class sizes by industry-experienced tutors who know what it takes to succeed.
- work on live briefs set by employers and benefit from guest speaker lectures. Previous students have worked on briefs for Proto, Zerolight, Sumo Digital, DXC and Four Fusion.
- have the chance to go on national and international field trips to enrich your studies.
- benefit from industry insight through our guest lecture series.
- meet potential employers through networking events.

## JOBS DIRECTLY RELATED TO COMPUTING QUALIFICATIONS INCLUDE:

- Applications Developer
- Cyber Security Analyst
- Data Analyst
- Games Developer
- Multimedia Programmer
- Network Engineer
- Penetration Tester
- Project Manager
- Software Developer
- Support Technician
- Systems Analyst
- UX Designer
- Web Developer.

## FdSc GAMES TECHNOLOGIES

**DURATION: 2 YEARS**

**ENTRY REQUIREMENTS: 64 UCAS POINTS**

**UCAS CODE II61**

This Games Technologies Foundation Degree allows you to explore your creative side as well as develop advanced technical skills to set you up for a rewarding career in programming, 3D design or games development. You will learn from highly skilled tutors with extensive experience of designing and developing games. You will have an interest in how the front-end and back-end of games are created and cover topics such as games design, animation and modelling. Developed with industry professionals including Glitchers, Wolf and Wood, High Tea Frog and Hangar13, this degree will help you develop communication skills, project management and professionalism as you will be working with real clients on live projects set by employers.



**CLICK ME**

**TAKE A LOOK  
AT OUR COMPUTING  
DEGREES ONLINE**

## FdSc NETWORKING AND CYBER SECURITY



**DURATION: 2 YEARS**

**ENTRY REQUIREMENTS: 64 UCAS POINTS**

**UCAS CODE: 2B9L**

This exciting Networking and Cyber Security Foundation Degree is the only one of its kind in the North East that focuses solely on networking and cyber security and has been developed with input from industry professionals. You will build secure networks, assess the vulnerability of networks and carry out open source investigation. You will use analytical, methodical skills and have a curious mind with the ability to make decisions and problem-solve. You will use industry-standard Cisco equipment as well as network simulation software and learn Python programming and Windows server administration, all from tutors with extensive knowledge and experience of networking and cyber security. You will also have the opportunity to study Cisco Professional Qualifications that are embedded in this qualification.

## FdSc COMPUTING

**DURATION: 2 YEARS**

**ENTRY REQUIREMENTS: 64 UCAS POINTS**

**UCAS CODE: G400**

This Computing degree has been developed in collaboration with a range of organisations and is perfect if you want to keep your options open. You will have the option to study two streams from a broad range of topics including Networking, Cyber Security, 3D modelling, Games Programming, Software Engineering and Web Development. You will work collaboratively with students from many courses to gain real-work experience and develop your professional skills. You will also have the opportunity to study courses from Cisco's Netacad platform.

This course is ideal for those who want to study a wide range of topics or have not yet found the specialism they wish to study.

## FdSc SOFTWARE ENGINEERING



**DURATION: 2 YEARS**

**ENTRY REQUIREMENTS: 64 UCAS POINTS**

**UCAS CODE: G612**

This Software Engineering Foundation Degree will prepare you for a fulfilling and exciting career within the ever-growing computing industry. The demand for talented and specialised employees who can design, develop and implement software applications and databases is growing, and this demand shaped the design and content of this degree. Working alongside industry-experienced tutors and with fantastic facilities, this practical degree will provide you with a strong foundation for your career ahead.

At Newcastle College University Centre we have collaborated with key industry contacts in the region so you will get relevant, career-focused training in a range of computing areas. Alongside this qualification, you will also be accredited with a Software Developer Higher Technical Qualification (HTQ).

## BSc (HONS) COMPUTING (TOP-UP)

**DURATION: 1 YEAR**

**ENTRY REQUIREMENTS: FOUNDATION DEGREE OR EQUIVALENT IN A RELATED AREA**

**UCAS CODE: G500**

This Computing (Top-Up) degree has been designed to lead you into an exciting career in computing or a more specialised career in networking and cyber security. Alongside the compulsory modules on this degree, you will have the opportunity to choose two further modules depending on your interests and career aspirations. The optional modules include systems development, web APIs, advanced networking and digital forensics. As a Computing student you will also have access to our dedicated networking lab with its own private internal network, allowing you to build your own network using the latest industry-standard hardware and software.

## BSc (HONS) GAMES TECHNOLOGIES (TOP-UP)

**DURATION: 1 YEAR**

**ENTRY REQUIREMENTS: FOUNDATION DEGREE OR EQUIVALENT IN A RELATED AREA**

**UCAS CODE: I600**

This Games Technologies degree has been developed in collaboration with employers including Wolf and Wood, INFINITY27, YourFilm and Chokepoint Creative and is ideal if you are looking to pursue a career in the gaming industry. You will acquire specialist industry knowledge and learn how to produce blueprints for games, consider how mobile-friendly versions are made and gain the technical expertise to create them. You will have a passion for design and a creative flair, but also possess an analytical mind and want to gain a deeper understanding of the back-end of games and how they are developed. You will use industry-standard software and equipment such as VR headsets to support your studies.



### STAFF PROFILE

I enjoy delivering technical modules with a practical outcome. I get to use my experience working on industry projects to help students develop their skills in 3D modelling, texturing and animation. It's very rewarding to see students bring their own ideas to life, from a simple concept all the way to a character they can move around in a game.

MURRAY LAMBERT, LECTURER



### STUDENT PROFILE

What I enjoy most about my Computing degree is the friendships I've made and knowledge I've gained along the way. I've always looked forward to coming onto campus to hang out with my friends while doing work that I absolutely love. It's a real win-win!

KIERON WEST,  
COMPUTING STUDENT

### INDUSTRY SUPPORTERS



w@terstons

# CRIMINOLOGY, POLICING AND CRIMINAL LAW

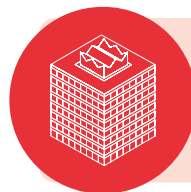
**As a Criminology, Policing and Criminal Law student, you know how important it is to protect the public. You are a practical and logical thinker, looking to develop your skills and start a fulfilling career in the protection services.**

A Criminology, Policing and Criminal Law degree at Newcastle College University Centre will give you the foundation you need to kick-start your career in industry. Our practical courses are taught by former police officers and criminal justice workers, and have close links to industry specialists such as the Northumbria Police Crime Commissioner, the Violence Reduction Unit, British Transport Police and a range of North East law firms.

If you want a fulfilling and challenging career in a vital industry, start your journey with us.

## STUDY WITH US AND YOU WILL:

- be taught by industry-experienced tutors who know what it takes to succeed.
- really get to know your classmates through learning in smaller class sizes.
- have the opportunity to undertake additional qualifications such as first aid.
- benefit from industry expertise through our links to third sector organisations.
- have access to a fully-equipped sports hall and gym, to improve and develop your levels of fitness.
- have the opportunity to gain relevant and rewarding work experience in countries such as Italy, Malta and South Africa.



CRIMINOLOGY, POLICING AND CRIMINAL LAW STUDENTS STUDY AT THE VERTU MOTORS ARENA AND RYE HILL CAMPUS

## JOBS DIRECTLY RELATED TO CRIMINOLOGY, POLICING AND CRIMINAL LAW QUALIFICATIONS INCLUDE:

- Border Agency
- Community Development Worker
- Customs Handler
- Immigration Officer
- NHS Fraud Investigator
- Police Officer
- Prison Officer
- Probation Officer
- Security Services
- Youth Offending Officer
- Youth Worker.

## FdSc CRIMINOLOGY, POLICING AND CRIMINAL LAW



DURATION: 2 YEARS

ENTRY REQUIREMENTS: 64 UCAS POINTS

UCAS CODE: C610

This Criminology, Policing and Criminal Law Foundation Degree will provide you with the necessary knowledge, skills and behaviours needed for working within a variety of roles within the criminal justice system. Throughout the programme you will have the opportunity to explore different disciplines (both theoretically and practically) including policing, youth justice, prison services and the criminal prosecution service.

You will learn in simulation rooms and be immersed in virtual reality as part of your studies, as well as benefiting from hearing first-hand experiences from guest speakers including the probation service, British Transport Police and third-sector charities.



**CLICK ME**  
TAKE A LOOK AT OUR CRIMINOLOGY, POLICING AND CRIMINAL LAW DEGREE ONLINE



## STUDENT PROFILE

The tutors here are so supportive. They've been behind me every step of the way, making sure I get through my course and succeed. If you'd said to me, say five years ago, that I'd be graduating with a degree I'd have laughed at you, but here I am!

BRANDON EDWARDS-JARY,  
CRIMINOLOGY, POLICING  
AND CRIMINAL LAW STUDENT

# DIGITAL ARTS

**If you want to turn your passion for creativity into a fulfilling and exciting career, a degree in Digital Arts from Newcastle College University Centre will boost your skills, refine your flair and give you a creative environment where you will thrive with like-minded peers.**

Our degrees will give you a broad experience of the digital arts industry where you will access first-class facilities and software such as Cinema 4D and VR headsets, Mac suites, animation, illustration and visual FX workshop, green screen facilities and screen print studios.

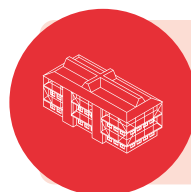
Getting you ready for a thrilling career in the digital industry is one of our top priorities. Not only will you learn from industry-experienced tutors, but our previous students have worked with specialists on live briefs and campaigns for companies such as Channel 4, Live Theatre and Penguin Books.

If you are a creative who thrives on telling stories through their work, you will love studying with us.



## STUDY WITH US AND YOU WILL:

- have the opportunity to undertake exciting placements with regional, national and international organisations.
- be taught in smaller class sizes by industry-experienced tutors who know what it takes to succeed.
- work on live briefs set by employers and benefit from guest speaker lectures.
- have the chance to go on national and international field trips to enrich your studies.
- exhibit your work at end of year shows.
- benefit from industry insight through our guest lecture series.
- meet potential employers through networking events.



DIGITAL ARTS STUDENTS  
STUDY IN OUR MANDELA  
BUILDING (SCHOOL OF  
ART AND DESIGN)

## JOBS DIRECTLY RELATED TO DIGITAL ARTS QUALIFICATIONS INCLUDE:

- 3D Modeller
- Animator
- Digital Designer
- Effects Animator
- Graphic Designer
- Illustrator
- Motion Graphics Designer
- Photographer
- Retoucher
- UI/UX Designer
- Web Designer.

## FdA GRAPHIC COMMUNICATION

DURATION: 2 YEARS

ENTRY REQUIREMENTS: 64 UCAS POINTS

UCAS CODE: W213

Explore emerging trends and technologies on this Graphic Communication degree. This degree will help you build a solid foundation in graphic design, advertising and interactive design such as web design, app design and related digital design. Learn traditional design principles and values, specialist technical skills and develop your creative excellence by responding to real client briefs with imaginative solutions. In your second year, you will have the opportunity to focus more on where your passions lie and develop your personal style while creating a specialist portfolio of work. If you are an innovative problem solver, love to take creative risks and throw yourself into every aspect of design, this is the degree for you.



**CLICK ME**

TAKE A LOOK  
AT OUR DIGITAL ARTS  
DEGREES ONLINE

## FdA FILM, TV AND MEDIA PRODUCTION

DURATION: 2 YEARS

ENTRY REQUIREMENTS: 64 UCAS POINTS

UCAS CODE: W6P3

Immerse yourself in the dynamic and ever-evolving world of visual storytelling with our Foundation Degree in Film, TV, and Media Production. This comprehensive programme is designed to equip aspiring filmmakers and media professionals with the skills, knowledge and creative insight needed to thrive in the rapidly changing landscape of the entertainment industry. You will have access to leading-edge facilities including editing suites, virtual production studio, photography studio and rehearsal rooms. By the end of this programme, graduates will be well-equipped to pursue careers in various roles within the film, television, and media production industry, including filmmakers, directors, producers, cinematographers, editors and content creators.



### STAFF PROFILE

I run my own 3D animation company and I'm one of the lecturers on the BA (Hons) Animation course. I try to not only bring in industry skills but also push experimentation with new technologies to further our students' skills.

PAUL SMYTH, LECTURER

## FdA ANIMATION

DURATION: 2 YEARS

ENTRY REQUIREMENTS: 64 UCAS POINTS

UCAS CODE: WW27

This Foundation degree in Animation covers a wide range of topics, including the principles of animation, character and environment design, 3D design and stop motion and is taught by industry-experienced tutors with real knowledge of the animation industry. Throughout this degree, you'll experience a blend of theoretical studies and hands-on practical learning, ensuring you develop both creative and technical skills, getting you ready for an exciting career in industry. You'll work with fantastic facilities too - the Animation Studio is equipped with state-of-the-art facilities housing 24" Cintiq pro graphics tablets, a green screen, stop motion facilities and industry-standard software.

## BA (HONS) PHOTOGRAPHY

DURATION: 3 YEARS

ENTRY REQUIREMENTS: 64 UCAS POINTS

UCAS CODE: W640

This practical degree is affiliated with the Association of Photography and will teach you fundamental technical and studio skills, such as lighting, camera operation, dark room practice and location photography. Developed in consultation with photographer Christine Harding, Mark Taylor and Mike Baster, this degree is focused on commercial photography and 'capturing a moment'. You will be passionate about the visual world and have strong communication skills, vital on any photo shoot. You will study topics such as composition and the history of photography as well as covering areas of photography, including still life, portraiture, food and editorial to help you become a well-rounded photographer.

Find out more at [ncl-coll.ac.uk](http://ncl-coll.ac.uk)

## BA (HONS) ILLUSTRATION

DURATION: 3 YEARS

ENTRY REQUIREMENTS: 64 UCAS POINTS

UCAS CODE: WW28

Our Illustration degree prides itself on innovation and new approaches to working with narrative visualisation through a host of personal and client-based projects. The practical techniques that are delivered develop both traditional and digital skills with the emphasis on drawing and visualisation techniques as a foundation for studio practice. You will be introduced to alternative methods of working that allow a free flow of creative and experimental work to be produced, as well as a clear understanding of industry practice and workflows that will benefit you in your future career within the creative industries. During this degree, you will have experience working with print making, digital visualisation in 2D and 3D as well as traditional drawing and painting.



### STUDENT PROFILE

I chose to study my Photography degree because I knew the space and the support at the University Centre was excellent. I came here when I was 16 and studied my Level 3 in Photography, then Stepped Up to a degree. It was a total accident but I've ended up doing 5 years of it so I must like it! I love the independence of the course and being able to reflect back on the development of my skills since I started here.

The staff are so genuine too, they're really passionate about what they do. For them, it's not just a job. You get loads of great advice for once you've finished your degree, it's hard to learn that from a book. We always get different industry stories from different tutors - you learn best on the job.

ALFIE FLOUNDERS  
DIGITAL ARTS STUDENT

## BA (HONS) FILM, TV AND MEDIA PRODUCTION (TOP-UP)

DURATION: 1 YEAR

ENTRY REQUIREMENTS: PASS OR HIGHER IN LEVEL 5 FOUNDATION DEGREE, DIPLOMA IN HIGHER EDUCATION OR HND (RELATED ART AND DESIGN SUBJECTS)

UCAS CODE: W6P6

Get ready for action with this BA (Hons) Film, TV and Media Production (Top-Up) degree, which will help you put the skills you developed at foundation level into practice. Spend your year self-directing a creative project of your own by developing, producing and distributing a commercially viable drama, documentary or corporate video production. You will have the freedom to explore your own ideas and you will evaluate your journey, all with the support of creative industry and business networks who will encourage you to submit your work to local and national film festivals. Underpinning your experience will be practical workshops and masterclasses to help you continue to develop your production skills.

## BA (HONS) ANIMATION (TOP-UP)

DURATION: 1 YEAR

ENTRY REQUIREMENTS: FOUNDATION DEGREE OR EQUIVALENT IN A RELATED AREA

UCAS CODE: WW29

The BA (Hons) Animation (Top-Up) degree is the ideal course to choose to build your enhanced skills in this area of Digital Arts and prepare you for a career in industry. This degree's combination of theoretical and practical modules, coupled with a focus on independent research and critical thinking, will ensure that you graduate with the skills and knowledge you need to thrive in the dynamic and ever-evolving world of animation. Working alongside industry-experienced tutors, you'll have access to our Animation Studio which is equipped with state-of-the-art facilities housing 24" Cintiq pro graphics tablets, a green screen, stop motion facilities and industry-standard software. If you want to enhance your animation skills, this is the degree for you.

## BA (HONS) GRAPHIC COMMUNICATION (TOP-UP)

DURATION: 1 YEAR

ENTRY REQUIREMENTS: FOUNDATION DEGREE OR EQUIVALENT IN A RELATED AREA

UCAS CODE: W214

This hands-on, practical Graphic Communication degree will teach you the fundamental processes and principles of graphic communication, digital design and creative advertising. You will study topics such as branding, user design and user interface and apply your learning in a real-life working context by solving communication-based issues for clients. You will be highly creative, a problem solver and enjoy drawing as well as digital techniques. You will be taught by tutors with many years of experience working in the industry who will support you to develop your professional skills and your ability to work as part of a multi-disciplinary team.

### INDUSTRY SUPPORTERS

END.



AOP



# ENERGY

**The energy industry is growing at a rapid pace and the need for experienced graduates with the skills for industry is increasing year-on-year. An Energy degree at Newcastle College University Centre will give you the experience, knowledge and skills to become a multi-skilled and proficient graduate.**

As a technical and methodical thinker, you will be passionate about building a career within the energy sector. Our Energy degrees have been designed alongside our industry supporters including Offshore Renewable Energy Catapult, Royal IHC, Subsea North East and Port Training Services, and will give you experience of energy engineering in a real-working environment.

Learning at our purpose-built Energy Academy, you will have access to industry-standard facilities such as a working wind turbine and develop your knowledge of design, subsea equipment, hydraulics, electrics, mechanics and maintenance.



#### STUDY WITH US AND YOU WILL:

- study at our Energy Academy – a centre for innovation, training and development for the offshore renewables and energy sector.
- have the opportunity to undertake industry visits to enrich your studies.
- prepare for work in the energy sector with facilities including a working wind turbine as well as industry-standard equipment.
- be taught by industry-experienced tutors who know what it takes to succeed.
- build valuable employer contacts through networking events.

**DID YOU KNOW?  
WE'VE RECENTLY INVESTED  
IN AN INDUSTRIAL DRONE!**

#### INDUSTRY SUPPORTERS

**CATAPULT**  
Offshore Renewable Energy

#### JOBS DIRECTLY RELATED TO ENERGY QUALIFICATIONS INCLUDE:

- Analysis Engineer
- Energy Engineer
- Energy Manager
- Marine Contractor
- Subsea Field Engineer
- Subsea Installation Engineer
- Sustainability Consultant.

#### FdEng ENERGY ENGINEERING

**DURATION: 2 YEARS**

**ENTRY REQUIREMENTS: 64 UCAS POINTS\***

**UCAS CODE: H221**

The £250million investment in the wind sector is set to triple the number of jobs by 2030. To help meet this demand, this Energy Engineering degree aims to produce multi-skilled work-ready graduates who are able to make an impact within the energy sector. The only one of its kind in the North East and taught from our specialist Energy Academy, you will develop core hand-tool skills and become knowledgeable in solar, geothermal, hydro and tidal power. Supported by Offshore Renewable Energy Catapult, Royal IHC, Subsea North East and Port Training Services, you will gain an in-depth understanding of the industry whilst also having access to a working wind turbine.

\*must be in engineering/maths and/or science disciplines.



**CLICK ME**

TAKE A LOOK  
AT OUR ENERGY  
DEGREES ONLINE

#### BEng (HONS) ENERGY ENGINEERING (TOP-UP)

**DURATION: 1 YEAR**

**ENTRY REQUIREMENTS: RELEVANT FOUNDATION DEGREE IN ENGINEERING, MATHS AND/OR SCIENCE SUBJECTS**

**UCAS CODE: HH42**

This Top-Up degree will allow you to develop your understanding of deeper engineering theories and practices within the renewables and subsea sector and add to knowledge you already have by exploring current industry concepts and problems. You will explore a variety of core vocational modules and take the opportunity to take theory and put it into engineering practice. You will study modules in Fuels and Energy Systems, Smart Grid Technologies and Energy Management and Economics. Alongside this, an industry-focused dissertation will be completed to allow you to focus on a unique specialism of your interest, focusing your engineering passion towards a specific set of problems.



**ENERGY STUDENTS STUDY AT  
OUR ENERGY ACADEMY**



# ENGINEERING

**You are a technical and methodical thinker with a desire to find solutions to any problems you come across. As an Engineering student at Newcastle College University Centre, you will thrive as you develop the skills you need for a successful career in industry.**

Learning in our industry-standard facilities, you will have access to our state-of-the-art CAD suites and equipment such as CNC, robotics, 3D printers, 3D scanners, metalwork lathes and fabrication tools. You will be encouraged to apply for and work towards EngTech status, giving you the edge as an Engineering graduate. Our degrees are linked extensively with industry. You will have the opportunity to work with big names in the industry throughout your studies including IHC, Renolit IMechE and Siemens.

If you seek to build a rewarding career, start your engineering journey with us.



**ENGINEERING STUDENTS  
STUDY IN OUR  
RUTHERFORD BUILDING**



**CLICK ME**

TAKE A LOOK AT  
OUR ENGINEERING  
DEGREES ONLINE

## STUDY WITH US AND YOU WILL:

- access equipment including a full fabrication shop, a manual machine shop, CNC area including a five axis CNC mill, 3D printing and industry-standard design software including SolidWorks.
- have access to manufacturing equipment including PLCs, microprocessors, electronic circuit construction equipment and software including MATLAB and Multisim.
- have the opportunity to undertake industry visits to enrich your studies.
- be taught by industry-experienced tutors who know what it takes to succeed.
- build valuable employer contacts through networking events.

**DID YOU KNOW?  
WE'VE RECENTLY INVESTED  
IN A CNC LATHE MACHINE!**

## JOBS DIRECTLY RELATED TO ENGINEERING QUALIFICATIONS INCLUDE:

- Automation Engineer
- Design Engineer
- Electrical Engineer
- Electronics Engineer
- Mechanical Engineer
- Mechatronics Engineer.

## FdEng ENGINEERING

**DURATION: 2 YEARS**

**ENTRY REQUIREMENTS: 64 UCAS POINTS\***

**UCAS CODE: HH40**

The FdEng Engineering course is designed to kick-start your engineering career, developing your skills in a specific discipline and providing a strong engineering foundation. You will build upon your basic engineering knowledge and develop advanced practical and theoretical skills in preparation for employment or further study. This Engineering course offers progression for those who have studied a related course during further education and provides an excellent balance of academic and industrial knowledge. It offers a pathway into mechanical or electrical engineering for those who may not have any previous experience of engineering as a subject but do have a strong maths or physics background.

\*must be in engineering/maths and/or science disciplines.



## BSc (HONS) ENGINEERING MANAGEMENT (TOP-UP)

**DURATION: 1 YEAR**

**ENTRY REQUIREMENTS: RELEVANT  
FOUNDATION DEGREE IN ENGINEERING,  
MATHS AND/OR SCIENCE SUBJECTS**

**UCAS CODE: H190**

This Engineering Management degree is designed to challenge the norm when it comes to efficient engineering solutions, whilst enhancing and developing your skills in various management and leadership techniques. You will use your engineering knowledge and skills to investigate and analyse areas such as product development, project management, productivity and competitiveness in preparation for employment and/or further study. The course is delivered by tutors with a wealth of experience in a diverse range of sectors and you will benefit from industry-experienced guest speakers including Royal IHC, Renolit, Port of Blyth and IMech E. If you already work within engineering and are ready to take your career to the next level, this course is designed to help you progress into a management or leadership role.

If you successfully complete the BSc (Hons) Engineering Management (Top-Up) degree you will also receive a Chartered Management Institute (CMI) accreditation.

### BEng (HONS) ELECTRICAL ELECTRONIC ENGINEERING (TOP-UP)

DURATION: 1 YEAR

ENTRY REQUIREMENTS: RELEVANT FOUNDATION DEGREE IN ENGINEERING, MATHS AND/OR SCIENCE SUBJECTS

UCAS CODE: H601

The BEng (Hons) Electrical Electronic Engineering (Top-Up) degree will give you advanced practical experience working with specialist facilities including simulation software such as MATLAB and, as an Engineering student at Newcastle College University Centre, you will have access to a range of industry-standard equipment in practical environments. During this practical degree you will study programming embedded microcontrollers using C Language, and enhance practical and theoretical concepts of digital electronics and electrical power systems by studying and building digital electronic circuits used in industrial environments. You will also learn about HVDC, synchronous and asynchronous machines and single and three phase power systems used in electrical power industrial applications. This Top-Up degree will also provide you with a balance of interpersonal skills and industrial knowledge from using an industrial approach to electrical electronic, control and industrial engineering techniques.

### BEng (HONS) MECHANICAL MANUFACTURING ENGINEERING (TOP-UP)

DURATION: 1 YEAR

ENTRY REQUIREMENTS: RELEVANT FOUNDATION DEGREE IN ENGINEERING, MATHS AND/OR SCIENCE SUBJECTS

UCAS CODE: HH3R

The BEng (Hons) Mechanical Manufacturing Engineering (Top-Up) degree has been developed to offer a balance of academic and industrial knowledge to meet the needs of key employers within the North East region, along with national and international businesses. During this degree you will explore engineering principles in a range of applied mechanical applications, manufacturing systems and processes, modelling and analysis and product development, as well as gaining practical experience of destructive and non-destructive testing, finite element analysis and fracture mechanics.

This course is mapped against the academic requirements of the Engineering Council UK-Spec for Incorporated Engineering (IENG) status and students are encouraged to join the Institute of Mechanical Engineering (IMechE) as a student affiliated member.



#### INDUSTRY SUPPORTERS



#### STUDENT PROFILE

I've learnt and developed so many transferable skills that employers are looking for, especially in graduate positions. Skills like clear and effective communication, time management and self-motivation are all important for employers.

GRACE LILLEY,  
ENGINEERING STUDENT





# HEALTH AND SOCIAL CARE

**Our mission is to inspire the next generation of care workers in the UK, developing our graduates to deliver outstanding service, compassion and an unwavering dedication to good practice.**

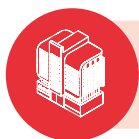
This is your first step into the world of health and social care and as you join the community at Newcastle College University Centre, you will have the opportunity to collaborate with like-minded peers. You will learn all of the skills and knowledge you need to become an outstanding healthcare professional.

We prepare our students for careers in the health and social care sectors and provide exceptional facilities in simulated environments such as our Counselling Suite and in-house hospital ward.

If you are passionate about making a difference to the lives of others, a degree in Health and Social Care at Newcastle College University Centre will provide you with the expertise to be that change.

## STUDY WITH US AND YOU WILL:

- be encouraged to undertake a work placement to develop your personal and professional skills.
- benefit from industry expertise through our guest lecture series.
- work on live projects set by employers to give you an insight into your chosen sector.
- be assessed in a variety of ways including peer assessments, portfolios, presentations and essays.
- be taught by industry-experienced tutors in smaller class sizes so you will really get to know your classmates.



**HEALTH AND SOCIAL CARE STUDENTS STUDY IN OUR PARSONS BUILDING**



**CLICK ME**

TAKE A LOOK AT OUR HEALTH AND SOCIAL CARE DEGREES ONLINE

## JOBS RELATED TO HEALTH AND SOCIAL CARE QUALIFICATIONS INCLUDE:

- Care Worker
- Case Manager
- Counsellor
- Family Support Worker
- Healthcare Assistant
- Health Service Manager
- Nursing Associate
- Social Worker.

## CerTHE COUNSELLING SKILLS AND THERAPEUTIC COMMUNICATION

**DURATION: 1 YEAR**

**ENTRY REQUIREMENTS: 64 UCAS POINTS**

**UCAS CODE: L513**

The Counselling Skills and Therapeutic Communication course is the first step on your path to becoming a counsellor. This degree provides hands-on, practical learning for those who want to practise counselling or open their own counselling service and is taught by practising counsellors. The CerTHE provides excellent progression opportunities and will enable you to develop an understanding of the principles and practices of communication and counselling approaches and will allow you to consolidate learning in practical counselling techniques, informed by the theory of counselling practice.

## CerTHE HEALTHCARE PRACTICE

**DURATION: 1 YEAR**

**ENTRY REQUIREMENTS: 64 UCAS POINTS**

**UCAS CODE: L512**

This CerTHE Healthcare Practice is your first step towards studying a nursing degree. Learning in a simulated hospital environment, this vocational healthcare degree will give you the foundation clinical and nursing skills to progress into further nursing studies and you will benefit from the industry experience of the qualified nurses who teach the degree programme. You will study topics such as psychology, sociology and safeguarding, giving you a foundation knowledge in nursing.

## FdA INTEGRATED HEALTH, SOCIAL CARE AND WELLBEING

**DURATION: 2 YEARS**

**ENTRY REQUIREMENTS: 64 UCAS POINTS**

**UCAS CODE: L540**

This Foundation Degree in Integrated Health, Social Care and Wellbeing will help you to understand the principles and practices of health, social care and wellbeing in the 21st century. You will study a range of subjects to prepare you for the diverse opportunities within the health and social care sector, as well as learning from the current industry expertise of our extensive range of staff, guest speakers and lecturers.

## FdSc HEALTHCARE PRACTICE



**DURATION: 2 YEARS**

**ENTRY REQUIREMENTS: 64 UCAS POINTS**

**UCAS CODE: L511**

This Healthcare Practice degree is an ideal course if you are interested in the health sector and are hoping to pursue a career in a professional healthcare role. This degree will give you the clinical and nursing skills you need to become a nursing practitioner and you will benefit from the industry experience of the qualified nurses who teach on this programme. You will focus on health promotion and learn in a simulated hospital environment. This course has been validated by health professionals and you will benefit from industry insight through guest lectures from the NHS.



### FdSc PSYCHOLOGY WITH SOCIOLOGY

**DURATION: 2 YEARS**

**ENTRY REQUIREMENTS: 64 UCAS POINTS**

**UCAS CODE: L541**

A Foundation Degree in Psychology with Sociology will help you develop a new understanding of how humans think and why they behave as they do, individually and societally. Learn from our industry-specialist lecturers about diverse topics such as psychological and social theory and research, the impacts of crime, media and intimacy, the psychology of childhood and youth, quantitative research methods and statistics and how contemporary social issues shape childhood psychology.

### BA (HONS) INTEGRATED HEALTH, SOCIAL CARE AND WELLBEING (TOP-UP)

**DURATION: 1 YEAR**

**ENTRY REQUIREMENTS: FOUNDATION DEGREE OR EQUIVALENT IN A RELATED AREA**

**UCAS CODE: L510**

This BSc (Hons) Integrated Health, Social Care and Wellbeing (Top-Up) course is an ideal progression route for those looking to further their Foundation Degree in the fields of health, social care and wellbeing. Learn from tutors with extensive industry experience while you build the skills and knowledge needed to gain higher-level jobs in the healthcare industry. You will learn how to respond proactively to changes in the health and social care sector, including developing new strategies for improving community health and wellbeing, while gaining experience to lead and manage healthcare sector workers across a range of disciplines.

### BSc (HONS) COUNSELLING SKILLS AND THERAPEUTIC COMMUNICATION (TOP-UP)

**DURATION: 1 YEAR**

**ENTRY REQUIREMENTS: LEVEL 5 FdSc COUNSELLING SKILLS AND THERAPEUTIC COMMUNICATION**

**UCAS CODE: L514**

This Counselling Skills and Therapeutic Communication (Top-Up) degree will help you to develop an understanding of the principles and practices of communication and counselling approaches. This health course will allow you to consolidate learning in practical counselling techniques, informed by the theory of counselling practice. This degree will prepare you to help others to cope with their problems, such as mental health issues, and family/relationship issues and the modules you will study will focus on person-centred counselling, current issues and best practice within the sector. Throughout this course you will benefit from current industry expertise through our extensive range of guest speakers and lectures.

### BSc (HONS) PUBLIC HEALTH AND HEALTH IMPROVEMENT (TOP-UP)

**DURATION: 1 YEAR**

**ENTRY REQUIREMENTS: FOUNDATION DEGREE OR EQUIVALENT IN A RELATED AREA**

**UCAS CODE: C2U8**

This BSc (Hons) Public Health and Health Improvement (Top-Up) degree will equip you with the skills and knowledge to improve and protect public health and the wellbeing of individuals, communities and populations. You will develop an understanding of the principles and practices of public health and health improvement in the 21st century to tackle major health challenges and reduce inequalities at global, national and local levels. As part of this course, you will have the opportunity to work on live briefs from the Newcastle Public Health Team as well as the opportunity to shadow Public Health Practitioners at work to give you an idea of what it is really like to work in the sector.

### BSc (HONS) PSYCHOLOGY WITH SOCIOLOGY (TOP-UP)

**DURATION: 1 YEAR**

**ENTRY REQUIREMENTS: AN APPROPRIATE LEVEL 5 IN PSYCHOLOGY**

**UCAS CODE: L542**

This Psychology and Sociology (Top-Up) degree will help you to develop an understanding of how humans think and why they behave as they do, both as individuals and within society. Not only will you develop a deeper understanding of yourself, but you will also develop the knowledge and skills to work effectively with a diverse range of individuals across a wide range of employment opportunities. This course is suitable for those wanting to pursue a career in the more traditional fields of psychological and social support, care and education, health and mental health services, public relations and service, research, digital media, marketing, charities, community work and social influencing.



#### INDUSTRY SUPPORTERS



#### STUDENT PROFILE

What I enjoy the most is the way I've developed while studying at Newcastle College University Centre. My knowledge has grown significantly while I've studied here, which has really helped me to improve my skills and experience for the workplace. I know that when I enter the nursing field I'll be able to put what I know straight into practice to help people, especially if it were practical clinical work, like knowing PPE policies, maintaining hygienic standards in wards or having good bedside manner.

DAWDA SARJO,  
HEALTH STUDENT



# HOSPITALITY AND TOURISM

**Study a Hospitality, Tourism or Aviation Operations degree at Newcastle College University Centre and benefit from 80 years of expertise and excellence.**

As part of our Hospitality degrees, we work with some of the North East's top hospitality companies such as 21 Group, Blackfriars and Maldron Hotels, giving our students work placement opportunities and enhanced career prospects.

Our Tourism and Aviation Operations students work with the best too. Throughout your degree you will have the opportunity to work with some of the best names in the business with previous collaborators including NGI, Ramside Estates Ltd, the National Trust, Northumberland County Council, Northumbrian Water at Kielder, NIA, British Airways, Jet2 and Swissport.

## STUDY WITH US AND YOU WILL:

- have the opportunity to undertake exciting work placements to gain practical work experience.
- really get to know your classmates through learning in smaller class sizes.
- be taught by industry-experienced tutors who know what it takes to succeed.
- be assessed in a variety of ways including written assignments, portfolios and reports.
- benefit from industry insight through our guest speaker lecture series.
- have the chance to work on live projects set by employers.



**CLICK ME**

TAKE A LOOK AT  
OUR HOSPITALITY  
DEGREES ONLINE

## JOBS DIRECTLY RELATED TO HOSPITALITY, TOURISM AND AVIATION OPERATIONS QUALIFICATIONS INCLUDE:

- Cabin Crew
- Catering Manager
- Chef
- Chef de Partie
- Commis Chef
- Events Management
- Hotel Manager
- Passenger Services
- Restaurant Manager
- Travel Agency Manager.

## FdA CULINARY ARTS



**DURATION: 2 YEARS**

**ENTRY REQUIREMENTS: 32-64 UCAS POINTS**

**UCAS CODE: N850**

If you are an aspiring chef or looking to pursue a career in hospitality management or food development, this Culinary Arts degree will help you get there. Building on your existing cookery skills, you will develop advanced culinary knowledge and techniques, as well as the skills needed to market and manage a range of food businesses. You will explore gastronomy and innovation in food, the latest food trends and expand your understanding of issues including dietary requirements, menu planning and managing finances. This degree was developed with the support of local chefs including Norman Bradford and Kyle Greenwood and you will learn from tutors with experience working in Michelin Star environments.



HOSPITALITY AND TOURISM  
STUDENTS STUDY IN OUR  
LIFESTYLE ACADEMY



## STUDENT PROFILE

Studying at the University Centre has made me more confident in my ability and my vision as a chef. In the past, I would never have gone for a job if I thought there was a chance I wouldn't be able to do it, but now, I'm far more confident to put myself out there and apply for jobs that I really want and dream about getting. For me, the training and support I've received at Newcastle College University Centre has helped teach me to never hold myself back from going for my goals.

KIAN MARSHALL,  
HOSPITALITY STUDENT

### FdA AIRLINE AND AIRPORT MANAGEMENT

**DURATION: 2 YEARS**

**ENTRY REQUIREMENTS: 64 UCAS POINTS**

**UCAS CODE: N853**

Watch your career soar with an Airline and Airport Management degree. This degree is perfect if you have a passion for the aviation industry and are looking to work in an airport setting within management or at an operational level. You will study topics such as aviation safety and security, air transport operations and aviation regulations from tutors who have many years of experience of the industry, working at commercial airports and airlines including Virgin Atlantic, Jet2 and Air France. Through studying this degree, you will develop your professional skills such as communication, leadership and teamwork.

### FdA TOURISM AND EVENTS MANAGEMENT

**DURATION: 2 YEARS**

**ENTRY REQUIREMENTS: 64 UCAS POINTS**

**UCAS CODE: N890**

This Tourism and Events Management degree will help you to develop the knowledge and skills needed to succeed in the global tourism and events industry. You will learn about cultures, lifestyles and economies across the world and develop skills to navigate the industry within different countries. You will gain the practical management tools you need to manage and market a range of tourism and events businesses and benefit from close working links with local industry, including Hays Business Travel, NGI, ACAS and Northumbrian Water at Kielder. If you have a passion for people, enjoy experiencing different cultures and want to combine work and travel, this Tourism and Events Management degree is for you.

### BA (HONS) AIRLINE AND AIRPORT MANAGEMENT (TOP-UP)

**DURATION: 1 YEAR**

**ENTRY REQUIREMENTS: FOUNDATION DEGREE OR EQUIVALENT IN A RELATED AREA**

**UCAS CODE: N855**

Do you have a passion for the aviation industry? Are you looking to develop a career in leadership and management? If so, this Airline and Airport Management degree is the perfect way to elevate your future. Developed in collaboration with Swissport and Newcastle International Airport, this degree will help you build on the knowledge and professional skills you gained at Foundation Degree level. You will cover key topics such as sustainability within the aviation industry, crisis management and the principles of HR, as well as strategy and change management from tutors with extensive experience working in management positions within the industry.



**CLICK ME**

TAKE A LOOK AT  
OUR TOURISM  
DEGREES ONLINE



#### INDUSTRY SUPPORTERS

VISIT  
Northumberland

Newcastle International  
Your Airport

NORTHUMBRIAN  
WATER living water

maldron  
HOTEL  
NEWCASTLE

National  
Trust

BUILT 1863  
DOBSON & PARNELL  
RESTAURANT

North East  
Hotels Association

BLACKFRIARS  
RESTAURANT & BANQUET HALL

lumo

# MUSIC

**As a Music student at Newcastle College University Centre, you will be joining a creative community with a passion for developing and refining their talent.**

Our Music courses are hands-on, giving you that practical experience to set you apart from the rest. Our facilities will help you to build and establish your skills ready for an exciting career in industry.

During your studies you will have access to 10 recording studios and our gig space, The Venue, as well as working in industry-standard facilities with industry-experienced tutors. You will also have regular visits to some of our industry partner venues such as NX, The Cluny, Blank Studios, Little Buildings and guest lectures from Generator, Man Power and much more.



## STUDY WITH US AND YOU WILL:

- have exposure to some of the largest labels in the country such as Warner Music and an opportunity to gain a paid internship with them.
- be taught by industry-experienced tutors who know what it takes to succeed.
- benefit from guest speaker lectures to gain industry insight.
- be assessed in a variety of ways including portfolios, projects and reports.
- learn in smaller class sizes so you really get to know your classmates and tutors.
- be supported to self-release your own music through platforms like Spotify.



**CLICK ME**

TAKE A LOOK  
AT OUR MUSIC  
DEGREES ONLINE



MUSIC STUDENTS STUDY IN  
OUR PERFORMANCE ACADEMY

## JOBS DIRECTLY RELATED TO MUSIC QUALIFICATIONS INCLUDE:

- Front of House Engineer
- Musician
- Music Producer
- Music Teacher
- Monitor Engineer
- Session Musician
- Sound Designer
- Sound Engineer.

## FdA MUSIC AND SOUND PRODUCTION

DURATION: 2 YEARS

ENTRY REQUIREMENTS: 64 UCAS POINTS

UCAS CODE: W300

The FdA Music and Sound Production degree is for anyone who is serious about being a multi-skilled and highly employable music producer, live sound engineer or recording engineer. During this degree you will gain core skills in audio analysis and production, synthesisers, samplers, events planning and promotions as well as an understanding of the music industry and the impact of music within society. Music Production students will also have the opportunity to explore skills in electronic music production, live sound and studio recording, sound reinforcement, studio and venue maintenance, advanced audio production, rigging and advanced audio recording techniques. You will also join an exciting community of creatives, helping to take your skills to the next level.

## INDUSTRY SUPPORTERS

GENERATOR

GNE  
GIGS NORTH EAST



## BMUS (HONS) POPULAR MUSIC PERFORMANCE

DURATION: 3 YEARS

ENTRY REQUIREMENTS: 64 UCAS POINTS

UCAS CODE: W340

The BMus (Hons) Popular Music Performance degree will help you develop as a live or studio performer, session musician, composer or songwriter. As a Popular Music Performance student you will gain a deep knowledge of music and will cover topics such as music theory, composition, studio performance and production and digital media and promotion. You'll join our vibrant, creative community where you will have the chance to collaborate with like-minded students to host gigs, develop your own music and produce videos and album artwork. Whether you want to record the next hit single, write score for film and TV or work as a pit-band musician, our innovative degree can help you on your way.



## STAFF PROFILE

My favourite modules to teach are studio-based. My area of expertise is working with musicians in recording studios and helping them to develop their material. It's great to hear students come in with raw ideas and then see them develop over time.

JONNY BURGESS, LECTURER

# PERFORMING ARTS

**As a dancer, actor or musical theatre performer with a Performing Arts degree at Newcastle College University Centre, you will develop your skills for an exciting and successful career in industry.**

Our degrees are all about providing you with the practical skills necessary to thrive within your chosen industry. You will study in our state-of-the-art Performance Academy to hone your craft and learn from tutors who will bring their industry experience and in-depth knowledge of life on stage, in front of the camera and behind the scenes.

Our alumni have gone on to have fulfilling and successful careers as performers, choreographers, directors, writers, teachers and performing arts producers. You will be joining an array of artists, performers and stage managers who have tread the boards before you, showcasing the very best talent Newcastle College University Centre has to offer.



**CLICK ME**

TAKE A LOOK AT OUR  
PERFORMING ARTS  
DEGREES ONLINE



PERFORMING ARTS  
STUDENTS STUDY IN OUR  
PERFORMANCE ACADEMY

Find out more at [ncl-coll.ac.uk](http://ncl-coll.ac.uk)

## STUDY WITH US AND YOU WILL:

- enjoy a range of workshops with organisations/industry professionals such as Northern Stage, Alphabetti Theatre, Fertile Ground, Elliot Smith Dance, Katie Brace, an alumni and West End performer, who has starred in Hairspray and Greece and Emma Katie Adcock, an alumni and West End performer, who has starred in Starlight Express.
- learn in smaller groups so you will really get the support you need from your course tutors.
- benefit from guest lectures and workshops with leading industry professionals.
- study and create in our specialist facilities including a 200-seat theatre, TV studio, music venue, recording studios, production areas and dance studios.

## JOBS DIRECTLY RELATED TO PERFORMING ARTS QUALIFICATIONS INCLUDE:

- Actor
- Choreographer
- Dancer
- Lighting Designer
- Music Producer
- Performer
- Theatre Director
- Theatre Technician
- Touring Manager.

## CertHE COMMERCIAL DANCE

DURATION: 1 YEAR

ENTRY REQUIREMENTS: 64 UCAS POINTS

UCAS CODE: W502

Put your best foot forward with this practical dance course, designed by professional dance practitioners. Develop the skills and knowledge required to become a performer, choreographer or teacher through technical training, creative workshops and performance. You will undertake training in commercial dance techniques, underpinned with Jazz, Urban, Contemporary and Ballet technique. You will be encouraged to explore a variety of dance processes and movement styles to become a versatile performer. You will experience working as a simulated dance company in creative and collaborative projects led by expert teachers, professional choreographers and external dance companies.



## CertHE MUSICAL THEATRE

DURATION: 1 YEAR

ENTRY REQUIREMENTS: 64 UCAS POINTS

UCAS CODE: W390

Prepare to enter the spotlight with this exciting and highly practical one-year Musical Theatre course. You will be trained to sing, dance and act as you build your talents by developing a broad range of skills in line with West End productions. At Newcastle College University Centre we offer comprehensive training classes in singing ensemble and solo performance, jazz and tap dance, along with choreography and staging musical theatre workshops to make sure you're just as comfortable taking centre stage as directing from offstage. Learn from our highly experienced tutors and their expansive professional networks to cultivate a range of skills as you are guided through audition techniques that will give you the edge in your future development portfolio to support your progression.

## FdA LIVE PERFORMANCE TECHNICAL PRODUCTION



DURATION: 2 YEARS

ENTRY REQUIREMENTS: 64 UCAS POINTS

UCAS CODE: W451

This Live Performance Technical Production Foundation Degree will help you develop the knowledge, skills and behaviours needed to become a Live Event Technician. This course has been informed by a team of industry experts to give you the unique opportunity to study on a course with a holistic approach to technician training. This degree covers systems and processes within live sound and lighting for live events, providing experience of theatre processes, the moving image and video conferencing. Throughout this degree you will refine your technical skills through work-based situations, studying in our dedicated music and theatre venues. You will support the Live Across Newcastle Performance Season, working in a range of regional venues such as Boulevard, The Exchange, The Laurels, Gosforth Civic Theatre, Tyneside Cinema and many more.

### FdA MUSICAL THEATRE

**DURATION: 2 YEARS**

**ENTRY REQUIREMENTS: 64 UCAS POINTS**

**UCAS CODE: W391**

Be a part of the greatest show and combine dancing, singing and acting in this highly practical, industry-integrated Musical Theatre degree. Alongside theory and academic studies of musical theatre genres and industry processes, you will take part in intensive, performance-based classes, developing skills for the stage. Learning from highly experienced and well-connected tutors, you will experience a range of classes, workshops and audition techniques, enabling you to expand your solo repertoire. You will be given the opportunity to take on leading roles within our musical theatre productions and perform alongside our Level 6 students in their innovative musical theatre works, performed in a variety of regional theatre venues such as Boulevard.

### BA (HONS) ACTING FOR STAGE AND SCREEN

**DURATION: 3 YEARS**

**ENTRY REQUIREMENTS: 64 UCAS POINTS**

**UCAS CODE: W410**

Prepare for a career in theatre or on television by combining practical performance training with academic and creative study on our industry-integrated acting programme. Whether you wish to perform, write or direct for stage or screen, this degree will help develop your knowledge and technique whilst developing industry contacts. With performances at venues both on and off campus and a range of workshops from professional actors, directors and agencies, you will experience diverse opportunities which will prepare you for industry. Working with a casting agent, you will create self-tapes, present yourself in auditions and gain work experience. During this degree you will benefit from strong links and opportunities with companies and venues such as Northern Stage, Alphabetti Theatre and Live Theatre.

### BA (HONS) DANCE

**DURATION: 3 YEARS**

**ENTRY REQUIREMENTS: 64 UCAS POINTS**

**UCAS CODE: W500**

Designed by professional dance practitioners with industry-integrated experience, this degree combines dance training and performance with creative workshops and academic study to help you develop the skills you need to become a versatile performer, choreographer or teacher. Based in our Performance Academy, a regional centre for dance and performance, you will explore a range of dance techniques and styles, with continuous training in contemporary, ballet, jazz and commercial techniques, undertaking industry-based workshops in urban dance, musical theatre preparation and aerial skills. Working in a simulated dance company, you will work with professional choreographers to create new and innovative dance works. Learning from course tutors with extensive dance experience and engaging with industry, you will grow your creative skills and leadership abilities to prepare you for a career in industry.

### BA (HONS) MUSICAL THEATRE (TOP-UP)

**DURATION: 1 YEAR**

**ENTRY REQUIREMENTS: FOUNDATION DEGREE OR EQUIVALENT IN A RELATED AREA**

**UCAS CODE: W393**

Put your career centre stage and advance your professional skills in acting, singing and dancing with this practical, industry-integrated Musical Theatre degree. You will become a member of 'The Company', our inter-dependent performance company, in which you will create, direct, choreograph and perform a new innovative musical theatre work for a regional venue such as Boulevard. Offering you hands-on experience and insight into every area of theatre work, this project will prepare you for a range of musical theatre careers. You will build on your existing musical theatre knowledge, audition techniques and solo repertoire, learning from expert industry professionals to develop your own performance skills and style ready for the industry.

#### INDUSTRY SUPPORTERS

**alphabetti**  
T H E A T R E



**N**  
NORTHERN  
STAGE



#### STUDENT PROFILE

The support I received from my tutors was brilliant, they always want us to succeed. They all really wanted me to do the best I could and, for me, the environment I have learned in and the people I learned with has made me enjoy my degree even more.

ELLIE STURROCK,  
PERFORMING ARTS STUDENT



# RAIL AND CIVIL

**Our Rail and Civil Engineering Academy is renowned for delivering some of the UK's most in-depth training in the rail and civil engineering sectors.**

Whether you have a keen interest in the rail and civil industries or have a technical problem-solving mind, a degree from Newcastle College University Centre will provide you with an excellent foundation for a rewarding career in these vital sectors.

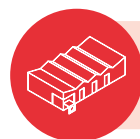
As a degree student, you will learn from industry-experienced tutors in our simulated Rail and Civil Engineering Academy. Our facilities feature an indoor and outdoor track, overhead lines, level crossings and signalling infrastructure as well as being equipped with a soils laboratory, surveying structure and electronics lab.

Our employer partnerships will help you to thrive. Our rail and civil degrees have been created alongside some of the biggest names in industry and provide you with the opportunity to experience and problem-solve real-life scenarios.



## STUDY WITH US AND YOU WILL:

- have the opportunity to undertake industry visits to enrich your studies.
- be taught by industry-experienced tutors who know what it takes to succeed.
- build valuable employer contacts through networking events.
- develop your skills in state-of-the-art facilities at the Rail and Civil Engineering Academy, providing you with industry-standard equipment and insight.



**RAIL AND CIVIL STUDENTS  
STUDY AT OUR RAIL AND CIVIL  
ENGINEERING ACADEMY**



**CLICK ME**

TAKE A LOOK AT  
OUR RAIL AND CIVIL  
DEGREES ONLINE

## JOBS DIRECTLY RELATED TO RAIL AND CIVIL QUALIFICATIONS INCLUDE:

- Civil Engineer
- Engineering Technician
- Railway Manager
- Rail Technician
- Track Maintenance
- Transport Manager
- Transport Planner.

## HNC IN CIVIL ENGINEERING

**DURATION: 1 YEAR**

**ENTRY REQUIREMENTS: 64 UCAS POINTS**

**UCAS CODE: H203**

If you have an interest in how the world around us is designed, created and connected, this Civil Engineering course is perfect for you. Supported by CECA North East and Robertson Civil Engineering, you will focus on construction and civil engineering techniques, maths and structures, technical drawing and design and strategy management. You will be taught by civil engineers who are still active in industry and will broaden your understanding whilst developing your management and strategic thinking skills. You will have access to a soils lab, electronics lab, surveying equipment, total stations and a CAD suite to help develop your practical skills.

## INDUSTRY SUPPORTERS



## FdEng RAIL ENGINEERING

**DURATION: 2 YEARS**

**ENTRY REQUIREMENTS: 64 UCAS POINTS**

**UCAS CODE: H201**

It is estimated that the rail industry will need 50,000 new workers by 2033. This Rail Engineering degree will equip you with multi-disciplinary rail engineering and management skills to help you enter the industry. The only degree of its kind in the North East, the course will enable you to develop knowledge and practical skills in track maintenance, overhead lines, electrification and signalling, coupled with management skills so you are able to pursue high-level roles within the rail industry. You will be taught by tutors who actively work within the rail industry and will be based at our dedicated Rail and Civil Engineering Academy, benefiting from links with Nexus, Network Rail, Vital and Cross Country.



## STAFF PROFILE

The courses have been written with the needs and wants of industry in mind. Our Rail and Civil degrees have been informed by industry leaders, ensuring our students are studying the most up-to-date and relevant modules. Furthermore, the support students receive both academically and personally is outstanding.

**DAN HEGARTY, CURRICULUM LEADER**

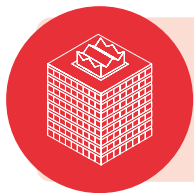


# SPORT AND EXERCISE

**As a Sport and Exercise student, you understand what it means to harness the transformative power of sport and exercise, whether you are supporting local communities, coaching elite performance athletes or helping people discover their hidden strengths through exercise and rehabilitation.**

Sport and Exercise courses at Newcastle College University Centre are your opportunity to immerse yourself in sport and exercise and pursue your dream career, learning from leading sport and exercise professionals. During your studies you will have the unrivalled opportunity to learn alongside three of the UK's biggest clubs: Newcastle Eagles, Newcastle Falcons and Newcastle United Foundation. Our tutors are also top-class. Among their ranks include a professional sports performance analyst, a Premier League nutritionist, an international futsal player and a Northern Ireland Women's Football captain with over 50 caps.

You will study in fantastic facilities, including those of our professional sports partners, alongside like-minded students, developing your skills and knowledge ready for a fulfilling career in the sport and exercise industry.



**SPORT AND EXERCISE STUDENTS STUDY AT THE NEWCASTLE EAGLES VERTU ARENA**

## STUDY WITH US AND YOU WILL:

- have the opportunity to undertake exciting work placements.
- be taught by industry-experienced tutors who know what it takes to succeed.
- really get to know your classmates through learning in smaller class sizes.
- have the chance to undertake additional qualifications such as first aid awards to enhance your employability.
- have the opportunity to gain relevant and rewarding work experience in countries such as Italy, Malta and South Africa.



## JOBS DIRECTLY RELATED TO SPORT AND EXERCISE QUALIFICATIONS INCLUDE:

- Exercise Rehabilitator
- PE Teacher
- Personal Trainer
- Physiotherapist
- Sports Administrator
- Sports Coach
- Sports Nutritionist
- Sports Therapist
- Strength and Conditioning Coach.



## STAFF PROFILE

I still work in the industry; it is important to me and my students that I am always up to date with current ways of working. I work together with my industry contacts and students to organise additional training, which complements their studies.

**GARY HALL, LECTURER**

## FdSc PHYSICAL EDUCATION AND SPORTS COACHING



**DURATION: 2 YEARS**

**ENTRY REQUIREMENTS: 64 UCAS POINTS**

**UCAS CODE: CX61**

Do you have an interest in working with children and young people in a sport or education setting? We have worked closely with organisations such as North East SCITT, Newcastle United Foundation and The Percy Hedley Foundation to develop this Physical Education and Sports Coaching degree to ensure it gives you the experience of working in industry. You will study topics including the national curriculum, coaching and teaching styles, child development and SEN and gain event management experience as you plan and deliver a sporting event. You will develop valuable skills such as teamwork, leadership and organisation through planning coaching sessions.

## FdSc SPORTS PERFORMANCE CONDITIONING AND REHABILITATION

**DURATION: 2 YEARS**

**ENTRY REQUIREMENTS: 64 UCAS POINTS**

**UCAS CODE: CB70**

Do you have the drive and passion needed to work in the sports sector? Our FdSc Sports Performance Conditioning and Rehabilitation course could be the ideal degree for you. During this degree you will study a range of subjects including an in-depth introduction to the fundamentals of performance conditioning and injury rehabilitation, and an exploration of some core components of sports science such as anatomy and physiology. You will benefit from learning in fantastic facilities, including a biomechanics lab, conditioning suite, sports hall and therapy clinic and learn from staff with a wealth of experience working within amateur and professional sports. You will also benefit from current industry expertise through guest speakers and lectures.

**BSc (HONS) APPLIED PHYSICAL EDUCATION AND SPORTS COACHING (TOP-UP)**

**DURATION: 1 YEAR**

**ENTRY REQUIREMENTS: FOUNDATION DEGREE OR EQUIVALENT IN A RELEVANT AREA**

**UCAS CODE: 7F3M**

As a student on the BSc (Hons) Applied Physical Education and Sports Coaching (Top-Up) degree you will become an effective team player, grow your passion for physical education and sports coaching as well as being committed to improving the health and fitness of young people. This degree has been developed in response to recommendations from industry partners in the sector, such as Newcastle United Foundation, to ensure you study a degree that is relevant to industry and what it needs. Within this degree, you will gain higher-level knowledge and cover topics including the psychology of sport and concepts of teaching and learning.



**CLICK ME**

TAKE A LOOK AT OUR SPORT AND EXERCISE DEGREES ONLINE



Find out more at [ncl-coll.ac.uk](http://ncl-coll.ac.uk)



**STUDENT PROFILE**

What I love most about my degree is the community spirit between my fellow students and peers, and the staff who teach, support and encourage us. I honestly can't speak highly enough of the staff in the Sport and Exercise department who've given me additional help and built up my confidence throughout my degree.

Every department here is full of people who are so passionate about what they do, be it teaching or learner support, but the dedication my own tutors have shown me in the last six years has been inspirational to me. The staff who've worked with me have without doubt been the driving force behind my degree and are a major reason why I've enjoyed it so much.

**LEWIS JAMES,  
SPORT STUDENT**

**INDUSTRY SUPPORTERS**



# UCAS TARIFF

## A Levels

Qualification and grade	UCAS Tariff Points
*A Level grade A*	56
A Level grade A	48
A Level grade B	40
A Level grade C	32
A Level grade D	24
A Level grade E	16

## Pearson BTEC Subsidiary Diploma (QCF)

Grade	UCAS Tariff Points
D*	56
D	48
M	32
P	16

## Pearson BTEC Level 3 Diploma (QCF)

Grade	UCAS Tariff Points
D*D*	112
D*D	104
DD	96
DM	80
MM	64
MP	48
PP	32

## Pearson BTEC Extended Diploma (QCF)

Grade	UCAS Tariff Points
D*D*D*	168
D*D*D	160
D*DD	152
DDD	144
DDM	128
DMM	112
MMM	96
MMP	80
MPP	64
PPP	48

## Pearson BTEC 90 Credit Diploma (QCF)

Grade	UCAS Tariff Points
D*D*	84
D*D	78
DD	72
DM	60
MM	48
MP	36
PP	24

# ENTRY REQUIREMENTS

We believe in lifelong learning and are committed to encouraging and expanding widening participation opportunities at Newcastle College University Centre. Our entry requirements outlined below give an indication as to what may be required for your chosen course.

We consider A Levels, T-Levels, BTECs, International Baccalaureate, Scottish Advanced Highers, Access to Higher Education Diploma Courses (approved by the Quality Assurance Agency (QAA)), Diploma in Foundation Studies (Art and Design), NVQ Level 3 qualifications and Level 3 Advanced Apprenticeships. For specific entry requirements, please email [undergraduate@ncl-coll.ac.uk](mailto:undergraduate@ncl-coll.ac.uk)

We would also encourage applications from students studying a Foundation Degree, HND or Diploma in Higher Education at other institutions, or Level 4/5 of a Degree Apprenticeship, to apply for the third and final year of an Honours Degree OR a one-year Honours Degree (Top-Up). Overseas qualifications will also be considered and for specific entry requirements please email [undergraduate@ncl-coll.ac.uk](mailto:undergraduate@ncl-coll.ac.uk)

## UCAS TARIFF

We use the UCAS Tariff system to assess your qualifications in order to make the most appropriate offer on your application. In addition to tariff information, all qualifications are assessed on the basis of their suitability for your intended degree course. It is recommended that you check the individual UCAS Programme Profile for the most up-to-date information. For some courses it may be necessary to include a number of points from certain subjects within the overall tariff score.

## TYPICAL ENTRY REQUIREMENTS

Typical entry requirements are given for guidance only. Please view the individual Programme Profile at [www.ucas.com](http://www.ucas.com) for more detailed information.

**Certificate in Higher Education (CertHE)**  
48 UCAS Tariff Points.

**Foundation Degree**  
48 – 64 UCAS Tariff Points.

**Honours Degree**  
48 – 80 UCAS Tariff Points.

**Honours Degree (Top-Up)**  
Applicants are expected to achieve a pass or higher in a relevant Level 5 qualification.

## GCSE

We normally expect applicants to have achieved or be working towards grade 4 (C) in English Language and Mathematics at the time of enrolment. We will also accept Functional Skills Level 2 or Adult Numeracy and Literacy Certificates in place of GCSE English Language and GCSE Mathematics for some programmes.

Please note: certain professions, for example those within Childcare, Sport, Engineering and Teaching, require degree graduates to have achieved a minimum of grade C (4) in both GCSE English Language and GCSE Mathematics.

# WHAT ELSE DO WE OFFER?

Newcastle College offers hundreds of courses at a range of different levels so you are sure to find something to suit your career aspirations.

## PART-TIME UNDERGRADUATE STUDY

To find out more about our part-time degree offer visit [www.ncl-coll.ac.uk/part-time-degrees](http://www.ncl-coll.ac.uk/part-time-degrees) or call 0191 200 4000

## EMPLOYER TRAINING

We offer a comprehensive range of business solutions that enable your business to maximise the development of your workforce. Whether you are looking to recruit and train new staff, upskill existing employees or develop your senior managers, we have options that will suit your business. For further information visit [www.ncl-coll.ac.uk/employers](http://www.ncl-coll.ac.uk/employers) or call 0191 200 4757.

## ADVANCED AND HIGHER LEVEL APPRENTICESHIPS

Newcastle College offers a wide range of Apprenticeships covering many industries and sectors. Advanced Apprenticeships are Level 3 qualifications, which are equivalent to two A Levels and Higher Level Apprenticeships are a Level 4-5 qualification, equivalent to a Foundation Degree. To find out more visit [www.ncl-coll.ac.uk/advanced-apprenticeships](http://www.ncl-coll.ac.uk/advanced-apprenticeships)

## DEGREE APPRENTICESHIPS

A Degree Apprenticeship is a three-year work-based qualification that combines invaluable on-the-job work experience with studying for an Honours Degree. For more information email [apprenticeships@ncl-coll.ac.uk](mailto:apprenticeships@ncl-coll.ac.uk)

## SCHOOL LEAVERS

Newcastle College offers a wide full-time 16-18 provision. Our courses range from First Diplomas, National Diploma Qualifications, BTECs and National Vocational Qualifications (NVQs). The level you study depends on your GCSE results, however you are sure to find a course that matches your skills and interests. To find out what it's like to study at the College, as well as information on the courses, visit [www.ncl-coll.ac.uk/school-leavers](http://www.ncl-coll.ac.uk/school-leavers)

## POSTGRADUATE STUDY

Designed for graduates and/or experienced professionals and usually involve one or two years study, full-time or part-time. We offer postgraduate courses in Business, Childcare, Digital Arts, Education and Health and Social Care. For more information on our courses visit [www.ncl-coll.ac.uk/postgraduate](http://www.ncl-coll.ac.uk/postgraduate)

# SUS TAIN ABLE CON TACT

For details on any of our courses visit [ncl-coll.ac.uk](http://ncl-coll.ac.uk) where you can find information and download prospectuses. If you are unsure about which level to study at or would like advice about finding the right course for you, simply call our Student Services Team on **0191 200 4000** or email [enquiries@ncl-coll.ac.uk](mailto:enquiries@ncl-coll.ac.uk) and a member of the team will talk you through your options.

This guide and other course information is available in alternative formats and large print. Call **0191 200 4000**.

## SAFEGUARDING

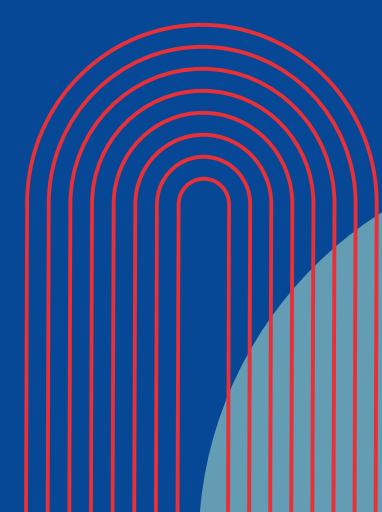
We are committed to safeguarding and ensuring all learners experience a secure, safe and welcoming environment in which they can fulfil their potential. Specific policies and procedures are in place to safeguard young people and vulnerable adults; these are robust and are reviewed regularly. Procedures are in place to take all reasonable measures to ensure risk is minimised and appropriate action is taken to address any welfare concerns. Newcastle College welcomes diversity in its student population – valuing differences in age, race, religion or belief, disability, sex, sexual orientation, gender reassignment, marriage and civil partnership and pregnancy and maternity.

## DISCLAIMER

Newcastle College University Centre will take all reasonable steps to provide the educational services and courses as described in this publication and in further documents. The contents of this publication relate to 2025 entry and are correct at the time of publishing (August 2024).

Any changes to our provision or services will be communicated to applicants at the earliest opportunity and updates will be made to our website ([www.ncl-coll.ac.uk](http://www.ncl-coll.ac.uk)) and our provision on UCAS ([ucas.com](http://ucas.com)).

There may be additional costs associated with your course such as field trips, equipment and printing. You can find out what's included in your Tuition Fee on our website and further information will be outlined by your tutor.



Newcastle College  
Rye Hill Campus  
Scotswood Road  
Newcastle upon Tyne  
NE4 7SA

0191 200 4000  
enquiries@ncl-coll.ac.uk  
ncl-coll.ac.uk



*Responsibly sourced,  
please recycle*