



full-time
course
guide
2025

events

Choosing a college is a really important decision, and we know you'll probably have lots of questions before applying to study a course at Newcastle College. We run events throughout the year to help give you as much information as possible about all we have to offer.

Monthly Open Events

Visit one of our Open Events and get a feel for what it's like to study with us! We'll help to find the right course for you!

What happens at an Open Event?

Join us to see our fantastic facilities, meet staff and:

- speak to tutors about the courses you're interested in.
- find out what support services are available to you whilst you study.
- chat to our Student Services Team about financial support you may be eligible for.
- see our campus for yourself.
- get support with making an application.

Please note: dates and venue are subject to change, please visit www.ncl-coll.ac.uk/events for full details.

Open Event Dates

WED	OCT 02 4.45PM – 7PM	NOV 06 4.45PM – 7PM	WED
WED	DEC 04 4.45PM – 7PM	JAN 08 4.45PM – 7PM	WED
WED	FEB 05 4.45PM – 7PM	MAR 05 4.45PM – 7PM	WED
WED	APR 02 4.45PM – 7PM	MAY 07 4.45PM – 7PM	WED
WED	JUN 04 4.45PM – 7PM		

DISCLAIMER

Information and courses published in this guide are intended for guidance purposes only and do not constitute a contract.

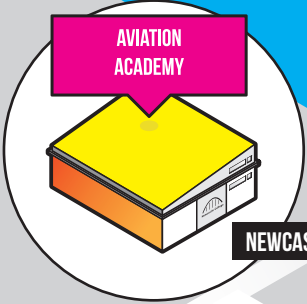
Newcastle College makes every effort to ensure that the information on courses given in this guide is up-to-date and accurate. However, the information may be subject to change and we do not guarantee its accuracy. NCG and Newcastle College do not accept any liability for omissions, errors or changes.

We reserve the right to review or amend entry requirements for any of our courses.

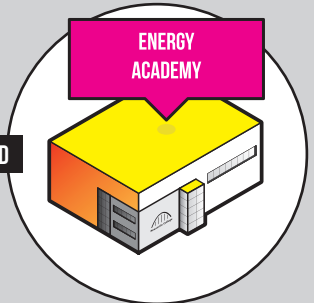
On occasion, it is necessary to move or withdraw courses owing to a variety of reasons. The College cannot, therefore, guarantee the provision of all courses advertised in this guide. Where a course is removed or amended, the College will make every effort to transfer students to a suitable and available alternative course.

Where applicable, we follow the guidelines set by funding authorities. Fees are subject to status and may change at short notice due to circumstances beyond our control. The fees payable are those in force at the time of enrolment, which supersedes any that may previously have been advertised.

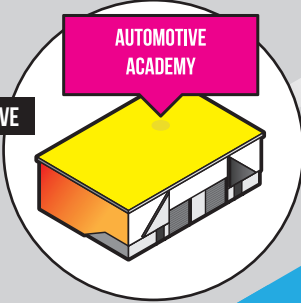
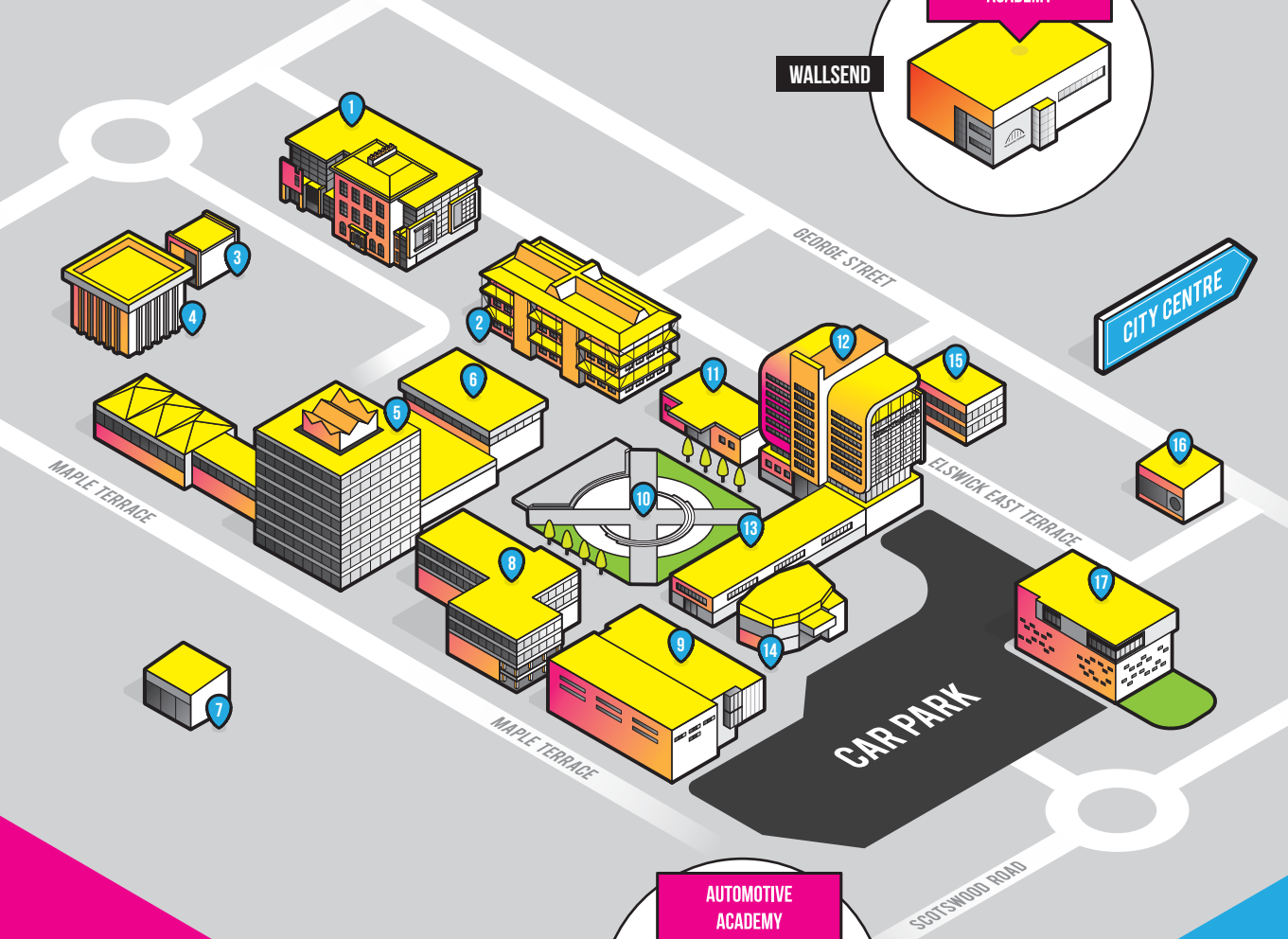
YOUR CAMPUS IN THE HEART OF NEWCASTLE



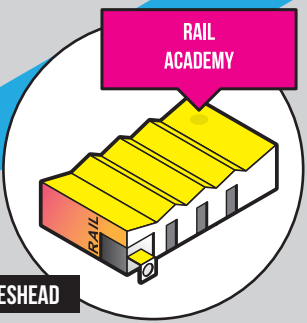
NEWCASTLE AIRPORT



WALLSEND



INVINCIBLE DRIVE



GATESHEAD

KEY

- 1 RYE HILL HOUSE
- 2 MANDELA (SCHOOL OF ART AND DESIGN)
- 3 NURSERY
- 4 SPORTS CENTRE
- 5 TREVELYN
- 6 CONSTRUCTION ACADEMY
- 7 RIVERSIDE DENE
- 8 RUTHERFORD
- 9 PERFORMANCE ACADEMY
- 10 RYE HILL PLAZA
- 11 LIBRARY
- 12 PARSONS
- 13 ARMSTRONG HOUSE
- 14 HE HUB
- 15 ESTATES
- 16 TEACHING DEVELOPMENT CENTRE
- 17 LIFESTYLE ACADEMY

Principal's welcome

Hello from Newcastle College!

This is an exciting time in your life as you begin to consider your future and make decisions about your next steps.

As you think about what your passions are, or what you'd like your career to look like, I hope you choose Newcastle College for the next part of your journey. Everything we do here is about preparation for a successful future – whatever that looks like to you.

We prioritise hands-on learning in first-class facilities, tutors with industry experience, and opportunities to work with employers and industry experts.

I am proud to say that Newcastle College is an open and welcoming college, with a diverse and vibrant student community at its heart. We always aim to give you an excellent learning experience and your wellbeing always comes first. When you choose us, you'll be welcomed by supportive staff who will offer you a safe space to be your best self whilst you study. You'll benefit from a Personal Tutor and our award-winning Student Support Team will be on hand to help you whenever you need them.

We insist students give their best, and in return we will give you the skills and experience you need to succeed. We'll support you to achieve your goals and we'll give you every chance to progress. You could even follow in the footsteps of our successful graduates from Newcastle College University Centre taking your studies all the way to Masters degree.

I do hope you're interested to learn more and our friendly Student Services Team is on hand to answer your questions. Seeing is believing and I encourage you to come along to one of our Open Events, where you can meet lecturers face-to-face, get a feel for the College and find the right course for you.

I hope that I'll be welcoming you to Newcastle College very soon!

Jon Ridley
Principal, Newcastle College



Student Information

Principal's welcome	2
Being a student at Newcastle College	4
Course levels	6
English and maths	7
Build the career you want	8
Links to employers	9
Inspirational facilities	10
Student life	18
College social	20
Student Services	22
Travel to and from college	24
Student support	26
Help with costs	28
FAQs	29
Information for parents and guardians	30
How to apply	32
Progression opportunities at Newcastle College	34
T-Levels	38
Courses	
Foundation Learning	46
Apprenticeships	48
Art and Design	50
Automotive	52
Aviation	54
Business	56
Early Years	58
Computing	60
Construction	62
Digital Arts	64
Engineering	66
Hair, Beauty and Make-Up	68
Health and Care	70
Hospitality and Catering	72
Law, Policing and Protective Services	74
Learning Development	76
Music	78
Performing Arts	80
Rail and Civil Engineering	82
Renewable and Subsea Engineering	84
Science	86
Sport	88
Travel and Aviation Operations	90
How to find us	92

being a student at Newcastle College

Choose to study with us and we'll do everything we can to make sure you're on course for success. We'll support you throughout your studies to realise your potential and really enjoy the best days of your student life. By studying at Newcastle College, you're taking that next step into independent learning and you'll be treated as an adult. We're here for you and in return, you will also have responsibilities as a Newcastle College student.

Attendance

We expect you will attend all of your lessons – after all, you can't learn if you're not here! Attending all lessons gives you every chance to succeed in your studies and develop impressive practical skills.

English and maths

If you're 16-18 years old and you don't achieve a grade 4 at GCSE then you'll continue to have lessons in these subjects. English and maths are an important part of any career. In order to pass your course you'll need to study GCSE resits or Functional Skills qualifications. We'll provide you with everything you need, it's then up to you to work hard and get the grades you need!

Deadlines

Your coursework and projects are really important. They are a key part of your course and how we track your progress and assess your learning. It's important you learn how to manage your time and meet deadlines for your coursework.



Safety first

When you complete your enrolment and are given a lanyard, you're officially a Newcastle College student. This is your ID and you are expected to wear it at all times when on campus and present your ID when requested to by a member of staff. This is to keep everyone on our campus safe.

Be respectful

Our campus is a diverse and welcoming place and it's important that every single one of our students and staff feels safe and comfortable when they're here. That includes you! So we ask that you keep our campus clean and tidy and treat everybody you meet with respect. There is zero tolerance for violence, bullying or threatening behaviour.

COURSE LEVELS

It can be hard to know which course and what level to start on. We have a course for everyone, regardless of your current grades, ability or ambitions. Once you have made an application to study with us, we'll review your application and work with you to ensure you start on a course that is best suited to you. Once you successfully complete that course you can progress onto the next level with us.

Full-time courses

The courses within this guide are studied full-time, requiring you to be in college most days. You'll focus on one core subject, and English and maths if relevant, learn in a hands-on way and be assessed in different ways. See **page 8** for what makes up your programme of study.

Apprenticeships

Why not consider an apprenticeship? With an apprenticeship you'll be in full-time employment which you'll combine with off-the-job training either in college or in the workplace. Check out **page 48** for further information.

Which level should I choose?

The level you study at depends on your GCSE grades. If your grades aren't as hoped, there's no need to worry. Regardless of your starting level, if you successfully complete your course with high commitment and a positive attitude, you can progress to the next level.

When you apply please provide us with your predicted GCSE grades.

Level you'll typically begin studying at	Number of GCSEs required to study	Still unsure which level is right for you?
Level 3	5 GCSEs at grade 4 or above (to typically include English and maths)	If you are still unsure which level to apply for come along to one of our Open Events to speak to our tutors or Student Advisors. Alternatively, call Student Services on 0191 200 4000
Level 1 or 2	4 GCSEs at grade 3 or below	

PLEASE NOTE THAT SOME COURSES MAY REQUIRE GCSE GRADES IN SPECIFIC SUBJECT AREAS E.G. MATHS, ENGLISH AND SCIENCE, WHILE OTHERS WILL REQUIRE YOU TO START AT LEVEL 1 TO LEARN THE TECHNICAL CRAFT OF YOUR CHOSEN SUBJECT.

Course levels within this guide are indicated as follows:

L1 → **LEVEL 1**

L2 → **LEVEL 2**

L3 → **LEVEL 3**

DID YOU KNOW?

When you successfully complete your Level 3 course with us you will be automatically eligible for a place at Newcastle College University Centre on a relevant degree course! See **page 34** for more details.

The importance of English + maths

English and maths at grade 4 GCSE or higher are essential in job roles across all industries. For example, calculating prices and ordering stock as a hairdresser, measuring ingredients as a chef or even providing quotes and raising invoices as a mechanic. All workers need to be able to communicate effectively both verbally and in writing.

At Newcastle College we place English and maths development at the heart of your Programme of Study and highlight the relevance of these throughout your time on the course. You will continue to develop these skills, so you are confident and competent in achieving the required level to progress.

If you don't already have a grade 4 or above in these subjects, your timetable will include English and maths lessons and you must attend these for you to successfully complete your course.

- ★ **Car mechanics need to provide quotes and raise invoices.**
- ★ **Hairdressers need to be able to calculate prices and order stock.**
- ★ **Chefs need to be able to measure out ingredients and price up menus.**
- ★ **All workers need to be able to communicate effectively both verbally and in writing.**



build the career you want

Our courses are designed to give you every opportunity to pursue your dream career.

Work-ready focused

Our aim at Newcastle College is to support your development of skills, knowledge and behaviours to be able to follow your passion into the career of your choice.

Throughout your time with us we'll work with you so that you're confident about your career plan and we'll give you every opportunity to achieve your aspirations.



How your course is made up

Your course is called a 'Programme of Study', and is made up of:

1

A vocational subject

The subject area you've chosen to study.

2

English and maths

Achieving English and maths at grade 4 or above is essential for you to progress. You will study this alongside your vocational subject if you don't achieve this grade at GCSE*.

3

Work experience and industry placements

You will have the opportunity to take part in a number of work-related learning activities, engage directly with employers through a series of planned visits and take part in external work placements with employers. Work placements will give you:

- experiences of real-working environments.
- increased industry knowledge.
- improved confidence.
- a chance to develop essential skills to progress in your future career.
- a chance to develop a greater understanding of the job roles within your chosen industry.

Your placement will also give you can insight into working life in your chosen industry and the expectations of employers.

4

Enhanced engagement activities

You will be involved with different enhanced engagement activities such as industry talks, class visits and external trips when you study at Newcastle College. These activities will support you to develop and prepare you not only with life skills but also the professional behaviours and attitudes you'll need to succeed in your career.

links to employers

When you study with us you'll benefit from our exceptional links to employers. We work with local, national and international employers, giving you the chance to learn first-hand about the careers and opportunities available to you.

Employers support our courses in a number of ways:

- career talks
- donating high-quality equipment
- donating prizes for student work
- guest lectures
- live projects and briefs
- masterclasses
- mock interviews
- progression into work
- providing expert guidance
- providing real work experience and industry placements
- skills advisory boards
- sponsoring awards ceremonies
- volunteering opportunities.

Here are some of the employers that support our courses:



inspirational facilities

We've invested in our facilities to give you the best learning experience possible. Our real-working environments allow you to get a taste of what it's like to work in your chosen industry.

See our
subject area
pages for
more info
on our
facilities!

Automotive Academy

Our Automotive Academy is a specialist facility, close to our Rye Hill campus, purpose-built for our Automotive students to learn skills for their future.



Aviation Academy

Located just off the runway at Newcastle International Airport, this impressive facility is where our Aviation students develop their skills for industry.



Construction Academy

This is the place to learn Bricklaying, Carpentry and Joinery, Electrical Installation, Painting and Decorating, Plastering and Plumbing.



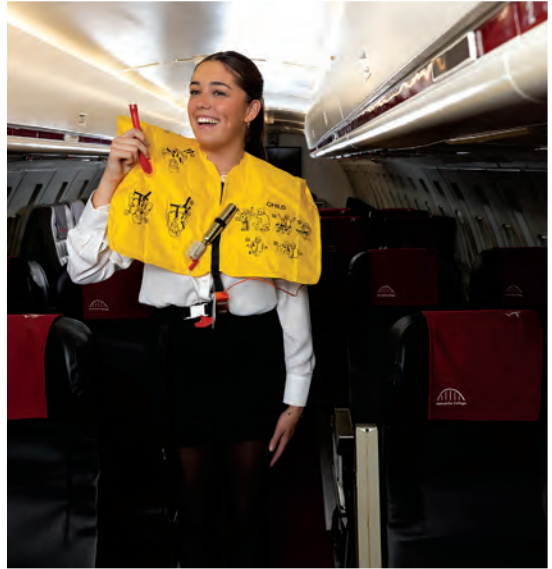
Energy Academy

Based in Wallsend, this facility is a hub for specialist engineers wishing to work in Subsea and Renewable Energy Engineering Technologies.



Lifestyle Academy

Specialist facilities can be found in our Lifestyle Academy; home to students studying Hair, Beauty and Make-Up, Travel and Hospitality.



Mandela (school of Art and Design)

Our dedicated Art School is based in Mandela and is our creative hub for Art and Design and Digital Arts students to develop their craft.



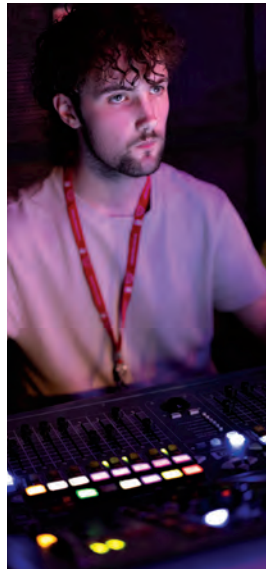
Parsons

Our Health and Care, Early Years and Science students benefit from this amazing facility with real-working environments to help develop skills whilst they learn.



Performance Academy

The Performance Academy is home to students studying Music and Performing Arts with facilities just like those you'd find in industry.



Rail and Civil Engineering Academy

Our Rail and Civil students benefit from this purpose-built academy in Gateshead developed to cater for all aspects of Rail and Civil Engineering.



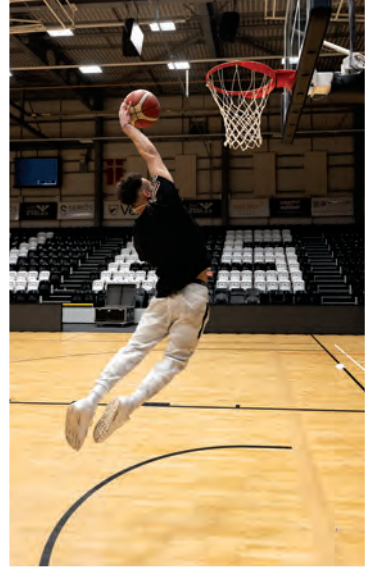
Rutherford

Rutherford is where our Engineering students learn and have access to a range of specialist facilities and industry-standard equipment.



Trevelyan

We have dedicated spaces and learning zones for our Business, Computing, Sport and Law, Policing and Protective Services students within Trevelyan building.





The course is a lot more practical and it's not all exams, you get to experience something you wouldn't with A Levels or in school. The course makes you more prepared for the workplace and prepares you for working with patients.

Lilly Gray

*Level 3 T-Level in Health –
Supporting the Adult Nursing Team*



student life

At Newcastle College we want you to enjoy your time with us. We aim to give you as many opportunities as possible to have fun and make memories alongside your studies.

students' union

You automatically become a member of Newcastle College Students' Union when you become a student at the College. Once you've enrolled, you can purchase an **NUS TOTUM** card which will give you a variety of **discounts and offers**. The Students' Union (SU) offers advice, campaigns on your behalf and works across the College to ensure you have a fantastic student experience whilst you progress through your studies. The Students' Union also runs a social programme throughout the year including events like our Freshers Fair, a volunteers fair, and other student-led events. They also offer the opportunity to start, and become a member of, student-led clubs and societies.

This includes:

- Trips and visits
- Student awards ceremonies
- Inter-college competitions
- An on-campus Costa Coffee
- A range of food outlets to enjoy.





college social

Check out our official Newcastle College social media accounts. Find out more about our beautiful city, incredible talent and what our students get up to at college! #ImInNCL

376 likes

A lush day at LUSH!
Our Level 2 Beauty students learning about skin care and ingredients by making bath bombs and face masks!

6 MINUTES AGO

191 likes

Such a great opportunity for our Sports students who shadowed athlete Stacey Smith during her Vo2 Max test!

8 MINUTES AGO

20:23 4G

Instagram

Newcastle College



298 likes

How amazing are these murals and educational games our Art and Design and Digital Arts students have created outside of a school in St Lucia! As part of the Turing Scheme our students will be working with a variety of artists in the Caribbean over the next two weeks! #artstudents #collegetrip #turingscheme #digitalartsstudent

5 MINUTES AGO [SEE TRANSLATION](#)



184 likes

Second place out of 367 teams? Hats off to our Civil Engineering students who have been recognised by the Institute of Civil Engineering (ICE) for being one of the top performing teams in the ICE City Zen gaming competition!

15 MINUTES AGO

Tell us why you're excited to study with us...

Tag us and use our hashtag **#ImInNCL** to be in with a chance of winning prizes

student services

Starting your new journey at college can feel like a big step, but we're here to help you along the way. Whether you need support with travel costs or want to find out which course is right for you, our Student Services Team is here to help.

Our centre is open Monday and Wednesday 9.30am - 4.30pm and Tuesday, Thursday and Friday 8.30am - 4.30pm (term time only).

Course information and advice

If you are looking for course information or impartial advice and guidance on your career choice and next steps, you can drop-in or make a one-to-one appointment with our team. We work with each individual to develop a unique learner journey to help you reach your full potential.

Careers advice

We are able to offer careers advice, helping you make the right choice when choosing a course at Newcastle College. For further careers advice, we can refer you to the National Careers Service.

Finance information and advice

This includes:

- childcare, travel and accommodation costs
- assessments for college support funds and bursaries
- course fees (if applicable), study costs and college financial support (such as college meal entitlement or travel costs and bursaries)
- signposting you to agencies who can support with benefit advice and debt management
- student finance applications and queries.

Wellbeing

We have an excellent college Central Support Team who we can refer you to. Our team offers a wide range of services including learning support, mentoring support, advice on sexual health and counselling.

Contact our team

Email: enquiries@ncl-coll.ac.uk

Phone: 0191 200 4000

We are **Option 3** on switchboard when calling.



› Travel to and from college

FREE TRAVEL PASS

WORTH UP TO £2,500

If you are eligible, this pass will cover you for the whole academic year. The College works closely with Go North East, Nexus, Stagecoach and Arriva to ensure you benefit from a travel package, which is best suited to your location. To qualify you must meet one of the following criteria:

- 1** living at home with a household income of under £32,300 (subject to certain criteria).
- 2** in care or a care leaver.
- 3** receiving Income Support, or Universal Credit because you are financially supporting yourself or financially supporting yourself and someone who is dependent on you and living with you such as a child or partner.
- 4** receiving Disability Living Allowance or Personal Independence Payments in your own right as well as Employment and Support Allowance or Universal Credit in your own right.

Your route to College

Many of our students do a trial run of their journey to college. Why not try it out to see which route would be best for you?

The nearest station to Newcastle College is Central Station. Here you can catch a bus, Metro or train.

Central Station is a short walk to the College, just head to the Life Science Centre, cut through Times Square, pass the National Express Coach Station, cross the road and head straight on. This is a well-lit area and lots of our students and staff walk this way to and from the College.

If you're unsure how you would get to college, check out Traveline's journey planner by visiting:

traveline.info

More information on how to find us can be found on page 92.

student support

When you study with us you can access a range of support to help you succeed. Our award-winning Central Support Service (CSS) is here to provide advice and support to all students.



Learning Support

Our teams are here to offer you disability-specific advice, guidance and signposting when you need it. We are committed to providing an inclusive learning environment to ensure you have full access to your chosen curriculum. The team will identify what support you need in the classroom and advise teachers on this or provide in class support for those who need it the most.

Assistive Technology

The Assistive Technology Team can provide you with equipment, software and training should you have any additional support needs. The team is also home to the Transcription Service, which can provide you with expert conversion of course materials, exam papers and other documents into a variety of different formats, such as Braille, large print and audio.

Pastoral Support

The team can work with you in a number of ways, including providing drop-in sessions, group work, one-to-one support and cover areas such as health and wellbeing, employability skills, academic study skills, healthy relationships and literacy and numeracy.



Mental Health and Wellbeing

We all have worries and anxieties and sometimes these can increase and become more frequent than usual. Good mental health and wellbeing is important to Newcastle College. That's why we have a dedicated Wellbeing Team, Counsellors, Learning Mentors and Youth Mental Health First Aiders to support our students.

Our aim is to ensure we support and respond to your mental health, emotional and social needs whilst you are studying your course with us. We will work with you to put the most appropriate support together and ensure reasonable adjustments are available and in place whilst you are at college.

Library and Learning Spaces

The Team aims to promote independent learning and provide a productive and vibrant environment for you to work, study and research in. In the main Library and independent learning spaces around campus, they are on hand to offer you individual help with research, study, referencing and access to thousands of resources.

GET IN TOUCH

Talk to our Central Support Service Team on

0191 200 4189

or email

css@ncl-coll.ac.uk

to discuss your support needs
and how we can help.

HELP WITH COSTS

IF YOUR HOUSEHOLD INCOME
IS LESS THAN £32,300*
YOU MAY QUALIFY FOR:

FREE meals

You may be entitled to a meal on the days that you are timetabled to attend college. This is allocated to your student number and is accessible via the cashless system, making it easy for you to claim your free meal in one of our many food outlets throughout the College.

FREE equipment and trips

As part of your course, you may benefit from equipment and trips to help with your learning.

For some courses there may be associated costs and depending on your circumstances you may be entitled to help towards these.

For full details contact our Student Services Team on 0191 200 4000 or visit www.ncl-coll.ac.uk/financial-support

* SUBJECT TO CERTAIN CRITERIA. TO FIND OUT IF YOU ARE ELIGIBLE, PLEASE SPEAK TO OUR STUDENT SERVICES TEAM.

PLEASE NOTE: FINANCIAL SUPPORT IS BASED ON ACADEMIC YEAR 2024/25 AND IS SUBJECT TO CHANGE FOR 2025/26.



FAQS

Travel

Q. How long will it take to receive my travel pass?

A. We aim to get your free travel pass to you within 4 weeks of receiving your completed application form.

Q. Will I be able to select a Travel Pass I want to use?

A. We're all about finding you the best travel pass that suits your needs. We want to make sure you have the most cost-effective option while taking into account factors like distance and duration.

Meals

Q. How long will it take to receive my Free College Meals?

A. Once we have your completed application form, we aim to have them available within a maximum of five working days.

Equipment Costs

Q. How long will it take to receive my equipment?

A. When you start your course in September, please speak with your course tutor and they will be able to support you with this. They will be your go-to person as equipment will vary across different courses.

Q. What equipment will I receive?

A. Your course tutor will be your best guide when it comes to what equipment you will need, so please have a chat with them first. Your course tutor will make sure you have everything you need and will be able to provide you with any recommendations before you buy any additional equipment.

INFORMATION FOR PARENTS AND GUARDIANS

If your child, or someone you care for, is exploring their options with Newcastle College, please know that we're here to support them every step of the way. Our commitment is to empower each student to aim high, accomplish their aspirations and progress beyond them.



Experienced tutors, active relationships with employers from across the region and high-quality facilities are at the heart of everything we do. Your supportive involvement is the foundation for providing the right conditions for our students to succeed too.

Your support and involvement

Starting college is an exciting next step to successful progression into the world of work. Your support is critically important to developing student independence and decision making.

Your assistance to support those you care for with career decision-making and helping them to understand the options available within education and training is a fundamental part of your involvement. We aim to keep you fully informed and updated so you also feel confident about the support and advice you provide.

Our ethos is to build a high-quality work ethic within all our students. This is with a focus on time keeping and high standards of professional behaviour in striving to be their very best every day.

Keeping track of progress

Our Personal Tutors will encourage and support all students to identify individual targets and build a progression plan. Regular one-to-one meetings and Progress Reviews are used to ensure students are kept on track and always know the progress they're making on their course.

We actively encourage you to participate and enable career conversations outside of college time. This complements our approach in supporting our students to think about their careers as well as offering emotional support and helping them to build their resilience, supporting them to achieve.

Student progress is reported through our dedicated online portal eTrackr. You do not automatically have access to eTrackr however, each learner has a unique log in which they can share with you. Alternatively, you can contact the Personal Tutor. Parental engagement activities are planned throughout the year, providing opportunities for parents to meet with Personal Tutors.



A Levels and vocational study – what's the difference?

College programmes (including BTECs and T-Levels) are broadly equivalent to A Levels, it's just a different route. They focus more on hands-on and practical skills rather than written assessments, which can be really beneficial when it comes to gaining experience and finding employment. They also train students up in specialist areas, so they can focus on the area that really interests them. In fact, the Government is keen to develop even more vocational courses, recognising the benefits of hands-on learning. They are still awarded UCAS points, so students can still progress to university if they succeed on their course.

If your child or someone you care for is interested in studying A Levels, Newcastle Sixth Form College is a dedicated A Level provider situated within our Rye Hill campus. Visit www.newcastlesixthformcollege.ac.uk to learn more.

Any questions?

Join an Open Event to speak to tutors, get course information and see what the campus has to offer.

how to apply

Once you have an idea of what you'd like to study we recommend you make your application as soon as possible to secure your place. We'll then send you all the information you need about the course and all the exciting things you can look forward to when studying with us. This will help you prepare for when you start your course with us.

1 Discover your options

- Visit ncl-coll.ac.uk
- Visit an Open Event (held monthly)
- Contact us on our social media (Facebook, X or Instagram)
- Call us on **0191 200 4000**
- Email enquiries@ncl-coll.ac.uk

2 Make your application

You can search for your course and apply online via our website; it only takes around ten minutes to complete. Click here to visit our website or go to ncl-coll.ac.uk

3 With you every step of the way

Once you've made your application we will be in touch to keep you updated with your application, as well as news, competitions and things you can look forward to.

Looking for advice?

- Join an **Open Event** to speak directly to tutors and get course information.
- Speak to our Student Services Team on **0191 200 4000**. We are **Option 3** on switchboard when calling.
- Email us at enquiries@ncl-coll.ac.uk for any career advice you need.



Ready to apply?

If you need help completing the online application form, our Student Services Team is on hand to provide support. You can come along to our centre or attend one of our Open Events, held every month, at our Rye Hill campus.

It is important you provide as much information as possible on your application, especially your current and predicted grades. This is to help us find the right course for you.

If you need support making an application from home contact our Student Services Team at enquiries@ncl-coll.ac.uk or call 0191 200 4000.

Once you have made an application

Our Student Services Team will process your application responsibly and efficiently, keeping you informed along the way.

We will contact you via email (this includes if we need to contact you about any missing information), so please ensure you use a personal, current and valid email address. If you are currently at school, please do not use a school email address as this may become unavailable when you leave. Don't forget to check your inbox for updates on the progress of your application.

PROGRESSION OPPORTUNITIES

AT NEWCASTLE COLLEGE UNIVERSITY CENTRE

Your journey with us doesn't have to end after you complete your studies. If you successfully meet the published Level 3 entry requirements in an appropriate subject(s), you will be guaranteed a place on that course.

As a further education student, you might not be thinking about moving to the next step just yet. However, it is always good to know what your future could bring and with Newcastle College, we can help you take that next step into higher education.

Many of our students choose to Step Up to a degree at Newcastle College University Centre. Once they successfully complete their Level 3 course, they choose to progress their studies to gain enhanced skills and knowledge before they pursue their chosen career.

We have over 60 degree courses to choose from with excellent student support and industry-standard facilities.

You can find out more about Steppin' Up at Newcastle College at www.ncl-coll.ac.uk/steppin-up



NEWCASTLE
COLLEGE
UNIVERSITY
CENTRE

STEPPIN' UP

“ ALFIE'S STORY

Alfie progressed from a Level 3 Digital Arts course to an Honours Degree in Photography.

“I chose to study my Photography degree because I knew the space and the support at the University Centre was excellent. I came here when I was 16 and studied my Level 3 in Photography, then Stepped Up to a degree.

“It was a total accident but I've ended up doing five years of it so I must like it! I love the independence of the course and being able to reflect back on the development of my skills since I started here.”



Take a sneak
peek into
student life at our
University Centre.



A DEGREE WITH A DIFFERENCE

You might not be thinking about your future just yet, but at Newcastle College you don't have to finish your studies when your Level 3 course is over. You can stay at our University Centre to study a degree!

Investing in You

We're in the middle of an £8million investment into our higher education facilities, providing our students with leading-edge equipment to support their studies. We're committed to making sure our students have a great learning experience with us, and this funding, awarded by the Office for Students (OfS), will give them the chance to train with even more industry-standard equipment than ever before, so they can be confident that they'll graduate with the skills and experience they need in their future career.

Students in Aviation, Digital, Energy and Engineering are already benefitting from leading-edge teaching facilities and equipment including new electric vehicles, wind turbine nacelles, drones, robots, VR and XR software, Cyber Security Labs, a new HE learning space, and even a new jet. The next stage of investment will see a dedicated HE Hub for Construction and Engineering including high-spec CAD/BIM suites and specialist digital labs.

Our University Centre

Our University Centre offers you a real alternative to university where you can study university-level degree courses that have been designed in collaboration with employers. You'll be taught in smaller class sizes in specialist teaching facilities, and have opportunities to work with employers to develop your professional skills.

What can I study?

We offer degrees in most of the subject areas in which you can study a Level 3 course. From Art and Design to Business, Computing, Engineering and Sport, our degrees will take you to that next level. You'll get to study in fantastic facilities and learn from our industry-experienced tutors.

What types of degrees are on offer?

You can study a CertHE (Level 4), Foundation Degree (Level 5), Honours Degree and Honours Degree (Top-Up) (Level 6) and a Masters Degrees (Level 7) at Newcastle College University Centre. We offer Degree Apprenticeships too!

Facilities just for you

When you study a degree at the University Centre you'll get to access the exclusive facilities that are just for our higher education students! This includes the HE Hub which has a bar serving hot food and drinks, as well as having plenty of social space for hanging out with friends or tackling that group project. You'll also get to use Parsons Floor 10 and the brand-new Turnbull Suite, featuring computers with the latest software, meeting pods and space to collaborate with friends.



Student Life

At Newcastle College University Centre, we think it is really important that our degree students get to experience all aspects of student life. There are plenty of ways for you to get involved in activities on campus when you study a degree!

Students' Union

When you enrol onto a degree course at Newcastle College University Centre, you automatically become a member of Newcastle College University Centre Students' Union, an affiliated member of the National Union of Students (NUS). You can apply for an NUS Totum card entitling you to a number of fantastic discounts in shops, restaurants and services nationwide.

The Students' Union has a range of officer roles available to you as a student. These officers help with the running of the Students' Union as a fair and exciting organisation and represent you around LGBT+ issues, disabilities, higher education and welfare.

Student Fellows

Students who take part in our Higher Education Student Fellowship Programme stand to gain valuable experience. The project is an opportunity for students who are looking for an experience to complement their studies, expand their skillset and improving their CV, all while getting paid.

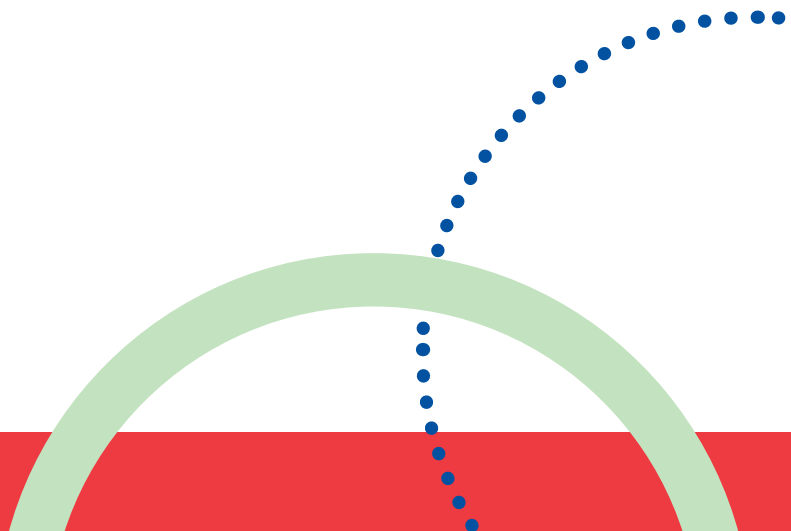
Support for degree students

Learning Mentors

Our Learning Mentors can provide you with one-to-one support for your mental health and wellbeing and can also signpost you to other services like counselling. We pride ourselves on providing our students with exceptional support throughout their studies.

Central Support Services (CSS)

Our support services are here to offer advice and support to students when they need it. We are committed to providing an inclusive educational environment and offer support for students to ensure that the University Centre is a safe and positive learning environment for all.



T-Levels

Newcastle College offers T-Level qualifications in Business, Construction, Civil Engineering, Design, Digital, Education, Engineering, Health, Legal and Science. You can apply now to study a T-Level with us from September 2025.

What are T-Levels?

T-Levels are two-year courses designed for 16–18-year-olds who have completed their GCSEs. These courses combine classroom learning with a 45-day work placement, providing hands-on experience in your chosen field.



Why choose a T-Level?

Created with businesses

More than 250 businesses have helped design T-Levels meaning they give you the skills that employers are really looking for.

Combine work and study

You spend most of your time learning in college (80%), but the remaining time you'll spend on work placement (20%) with an employer, where you will gain real-work experience.

Progression opportunities

Whether you want to go into higher education, an apprenticeship or straight into work, a T-Level will give you a nationally recognised qualification to help you do just that.

UCAS points

T-Levels are worth UCAS points and a T-Level Distinction* is worth the same as three A Levels at A*.

Confidence in T-Levels

Although T-Levels are relatively new, they are widely accepted by universities and employers, offering industry-relevant education.

When you pass your T-Level, you will receive a nationally recognised certificate indicating your overall grade (Distinction*, Distinction, Merit, Pass) as well as a breakdown of the specific skills and knowledge you gained during the course to help you transition smoothly into either University, employment, an apprenticeship or whatever you choose to do.



Entry requirements

Please visit our T-Levels webpage at www.ncl-coll.ac.uk/tlevels for more information on our courses and specific entry requirements.

Work experience

Work experience and industry placements are an important part of your T-Level. You must complete a minimum of 45 days (or 750 hours if studying an Early Years T-Level) of work experience to achieve your overall grade for your T-Level programme.

For more information on our T-Levels including entry requirements, assessment type, occupational specialism modules and progression opportunities, head to www.ncl-coll.ac.uk/tlevels



If we are unable to deliver specific T-Level pathways, we will communicate to applicants and work to find alternative and suitable programmes.



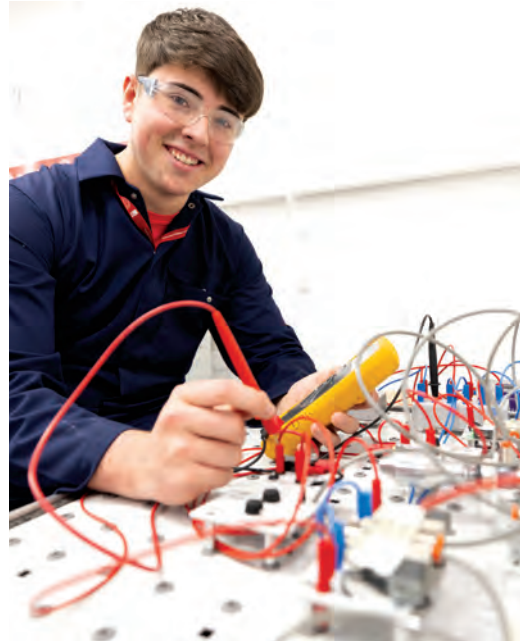
BUILDING SERVICES ENGINEERING

ELECTROTECHNICAL ENGINEERING - LEVEL 3

LENGTH: 2 YEARS

Overview

On this two-year course you'll spend most of your time in college learning the theoretical and practical skills you will need, studying a range of topics from health and safety to the principles of construction design and sustainability to systems and components by tutors who have years of experience working in the industry. You will complete the course with the ability to install, maintain and decommission electrotechnical systems, along with a solid understanding of the industry.



CRAFT AND DESIGN

TEXTILES AND FASHION MAKER - LEVEL 3

LENGTH: 2 YEARS

Overview

Whether it is clothes, art, or homewares you love to make, this Textiles and Fashion Maker T-Level will help you to develop the skills and knowledge you need to turn your passion into a career. You will explore areas including the creative economy and entrepreneurship, design principles and how to pitch designs to clients. You will also advance your practical skills, working with a range of materials to develop your understanding of their uses and suitability, as well as the essential techniques needed to create finished products, and the safe use of the tools used throughout, as well as how to create sustainable products.



CRIME, CRIMINAL JUSTICE AND SOCIAL WELFARE

LEGAL SERVICES – LEVEL 3*

LENGTH: 2 YEARS

Overview

If you're looking for a hands-on route into the legal profession this could be the perfect course for you. The course has been developed with guidance from professional legal body CILEX and it will help you to develop the knowledge and skills that you need to work in legal services and allow you to specialise in Crime, Criminal Justice and Social Welfare.

On this two-year course, you'll spend most of your time in college learning the theoretical and practical skills you will need, studying a range of topics from the fundamentals of law to professionalism and ethics, the civil justice system to applying the law in a business context.



DESIGN, SURVEYING AND PLANNING FOR CONSTRUCTION

CIVIL ENGINEERING – LEVEL 3

LENGTH: 2 YEARS

Overview

Are you passionate about building a better future? Civil engineering plays a vital role in society, and this T-Level in Civil Engineering will equip you with the knowledge and skills needed to excel in the design, surveying, and planning aspects of construction. Core modules such as health and safety, measurement, building technology, digital technology, and construction mathematical techniques will provide you with a solid foundation in the fundamentals of civil engineering, whilst topics such as design, sustainability, relationship management, commercial business, project management, and law will give you a broader understanding of the industry.



* Subject to approval

* Subject to approval

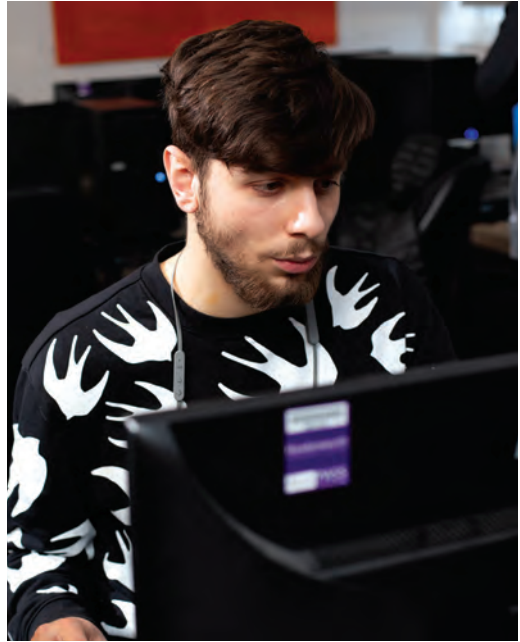
DIGITAL PRODUCTION, DESIGN AND DEVELOPMENT

DIGITAL PRODUCTION, DESIGN AND DEVELOPMENT - LEVEL 3

LENGTH: 2 YEARS

Overview

This two-year full-time T-Level course will provide you with all the skills and industry-experience you need to kick-start your career. Learning from industry-experienced tutors whilst gaining invaluable experience through a work placement, you will learn digital skills such as programming and emerging issues and the impact of digital as well as legislation and regulatory requirements and security.



DIGITAL INFRASTRUCTURE

DIGITAL SUPPORT SERVICES - LEVEL 3

LENGTH: 2 YEARS

Overview

Are you excited by the digital sector and want to develop the skills and knowledge you need to succeed? Do you want to specialise in digital infrastructure and learn how to install, test and manage both physical and virtual infrastructure?

This course covers data, digital environments, security, and infrastructure management. You'll learn to maintain digital security, develop problem-solving, decision-making, communication, and teamwork skills.



EDUCATION AND EARLY YEARS

EARLY YEARS EDUCATOR - LEVEL 3

LENGTH: 2 YEARS

Overview

During your studies you will build your experience in the early years sector, developing specialist knowledge and skills as you go. You will learn theory and best practice from industry-experienced tutors in our specialist on-campus Early Years facilities which simulate conditions within a working nursery.

You will study a range of vital topics, including behaviour, child development and special educational needs and disabilities. You will complete the course with the knowledge and practical skills you need to build an exciting career in Early Years.



ENGINEERING, MANUFACTURING, PROCESSING AND CONTROL

FABRICATION AND WELDING TECHNOLOGIES - LEVEL 3

LENGTH: 2 YEARS

Overview

Do you want a career in engineering? Have a scientific mind, enjoy hands-on work, and a passion for new technologies? This two-year course covers mechanical principles, applied electronics, health and safety, business acumen, and project management. You'll learn to design, create, and implement engineering technologies in complex systems and plan projects of varying scales. Additionally, you can participate in inter-college and national competitions to showcase your skills.



HEALTH

SUPPORTING THE ADULT NURSING TEAM – LEVEL 3

LENGTH: 2 YEARS

Overview

On this two-year course you will benefit from learning in our industry-standard facilities that replicate real hospital wards and health suites. Learning from industry-experienced tutors you will study a range of important topics such as health and safety regulations, scientific and clinical practice, and infection prevention, as well as theoretical studies of biology and chemistry. You will complete the course with the scientific knowledge and practical experience you need to make a real difference as an important contributor to the adult health industry.



HEALTH

SUPPORTING THE MENTAL HEALTH TEAM – LEVEL 3

LENGTH: 2 YEARS

Overview

Are you a passionate advocate for mental health support? Are you thinking about a career in this challenging but rewarding sector? As a Health student, you will benefit from learning in industry-standard facilities that replicate a real healthcare setting and will learn from tutors with years of experience within the sector.

You will study a range of important topics including health and safety regulations, scientific and clinical practice, and infection prevention, as well as theoretical studies of biology and chemistry.



MANAGEMENT AND ADMINISTRATION

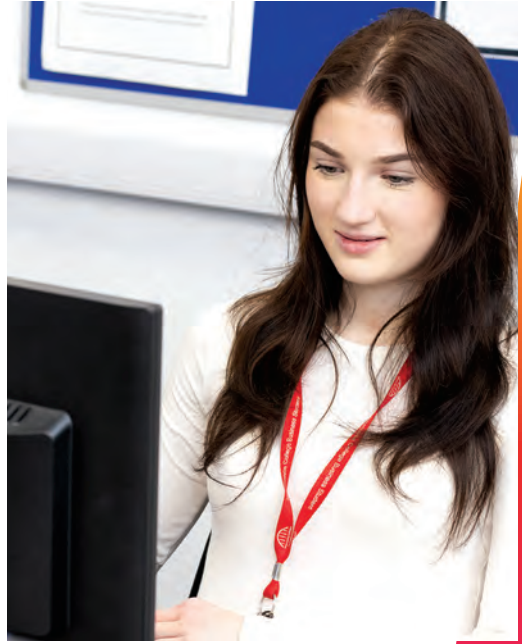
BUSINESS SUPPORT – LEVEL 3

LENGTH: 2 YEARS

Overview

On this two-year course, you'll spend most of your time in college learning the theoretical and practical skills you will need, studying a range of topics from the overall running and operation of an organisation, to recommending and delivering improvements, as well as business practices.

This course will help you develop your knowledge of how a business works from the inside and gain skills in key business areas including project management, people and finances.



SCIENCE

LABORATORY SCIENCES – LEVEL 3

LENGTH: 2 YEARS

Overview

Science is one of the most exciting industries around. If you're looking to start a career in laboratory sciences, build your skills and gain real-world experience, all whilst learning from our industry experienced tutors, this T-Level could be for you.

You will learn in our fantastic facilities, while exploring topics such as regulations in the health and science sector, data handling and scientific ethics, alongside theoretical studies of biology, chemistry and physics.



Foundation Learning

Foundation Learning courses at Newcastle College offer a route into your chosen vocational area. You'll study a vocational subject one day per week, helping you understand your future field. This course also enhances your English and maths skills alongside vocational studies. These entry level courses prepare you for further study at Newcastle College.



Access to Further Education

This is a progression-focused course which concentrates on the development of English and maths skills, whilst boosting your confidence and self-esteem. As part of the course, you will have the opportunity to study a vocational subject one day per week. This will help and support you develop your English and maths skills further.

The programme offers you the choice of courses in Art and Design, Early Years, Construction, Digital Arts, Health and Care and more. The Foundation Learning Progression Pledge will support learners who successfully complete their vocational studies, successfully achieve Functional Skills Level 1 in both English and maths, whilst also having an attendance record of 95% or above to progress onto the next vocational level within Newcastle College.

Access to ESOL

(English for speakers of other languages)

If English is not your first language, the ESOL fast-track course will help you to improve your reading, writing, speaking and listening in English. Improving your English will help with your progression onto further study at Newcastle College.



On course for the next step

On completion of your course, your Personal Tutor will support you to make future course choices. There are plenty of vocational courses for you to choose from, depending on your area of interest.



Apprenticeships

Apprenticeships are a great way to get yourself into the world of work whilst studying for a qualification. It means you can earn while you learn. Here at Newcastle College we know that the next step might seem daunting, but our experienced team is here to guide you along the way.



Where will I study?

During an apprenticeship you will be employed within a business doing a real job, whilst being supported through nationally accredited training delivered by Newcastle College. Our apprenticeships will support you with building a range of skills you can develop throughout your career.

Which level will I study?

Apprenticeships are available to anyone aged 16 years and over and are offered at different levels. You'll start on a level relevant to your experience and skill level. Apprenticeships take a minimum of 12 months to complete and you'll split your time between industry and being at college.



What areas can I do an apprenticeship in?

Automotive

- Motor Vehicle Service and Maintenance Technician (Light Vehicle)

Business

- Business Administrator
- Customer Service Practitioner

Construction

- Bricklayer
- Carpentry and Joinery
- Installation Electrician/
Maintenance Electrician Advanced
- Painter and Decorator
- Plasterer
- Roofer

Digital

- Creative Digital Design Professional
- Digital and Technology Solutions

Energy

- Metal Fabricator
- Plate Welder

Engineering

- Machining Technician
- Maintenance and Operations Engineering Technician
- Engineering Operative

Hair and Beauty

- Hair Professional

Hospitality

- Commis Chef

top tips

Ben was an Engineering apprentice at Newcastle College. Here are his top tips for studying an apprenticeship:

- 1 Make sure you put the work in – you only get out what you put in.
- 2 Never be afraid to ask questions – if someone else knows more about a topic than you, learn from them.
- 3 Be sociable – it doesn't just help you make friends, but also helps you build strong relationships with your tutors.
- 4 Always try to apply what you learn – the best way to use the knowledge you pick up in classes is to apply it with the skills you'll pick up from your apprenticeship.
- 5 Try to have fun – juggling work and classes can be intense sometimes, but there's always a chance to have a laugh with people too.

Art and Design

Our exciting courses will put your creativity to the test to prepare you for your future career. They will combine practical work, theory and work-related projects to give you the expertise you need to succeed. Benefit from a range of opportunities to showcase your work through live projects and exhibitions and build a portfolio of work to help you progress into further study or employment.

Courses

Art and Design	L1 L2 L3
Fashion, Business and Retail	L3
Fashion and Textiles	L3
Foundation Diploma (UAL) Art and Design	L3
Interior and Architecture	L3
Subsidiary Diploma in Visual Arts (UAL)	L3
Textiles and Fashion Maker (Craft and Design)	L3

Many of our Art and Design courses require you to hold a qualification in an art-based subject and be able to provide a portfolio of work which demonstrates your skills. When you apply you'll be invited into college to meet course tutors and to show your artwork.



Which level will I study?

We have a course for everyone, regardless of your qualifications. Take a look at **page 6** for details on entry requirements and the level you'll begin at.

What's next?

Once you have completed your Level 3 course you can stay at Newcastle College to study a degree at the University Centre! We've got a range of degrees to choose from such as Design Practice, Fashion Design, Fashion Marketing and Communication, Fine Art, Interior and Spatial Design and Surface Design.

T-Levels

available in Art and Design

Find out more on page 38.



Amazing facilities

Based within our School of Art in Mandela you'll have access to fully-equipped design studios, art studios and Mac suites. There are also wood and ceramic workshops with CNC and laser cutting facilities, a first-class screen-printing studio with fabric-printing facilities and modern workshops, plus a gallery space.



On course to be:

- an Architect
- a Curator
- an Entrepreneur
- a Fashion Buyer
- a Fashion Designer
- a Fine Artist
- an Illustrator
- an Interior Designer
- a Surface/Pattern Designer
- a Tattoo Artist
- a Textile Designer
- a Teacher
- a Visual Artist
- a Visual Merchandiser.

Automotive

If you have a passion for cars and want to learn about how they work, our Automotive courses will put you in the driving seat for a career in the automotive industry. You'll learn from industry-experienced tutors and gain hands-on experience in our Automotive Academy, to get the skills you need to work in garages, dealerships or workshops.

Courses

Automotive Maintenance and Repair **L1 L2 L3**

Vehicle Accident Repair (Multi-Skilled) **L1 L2**

Typically you'll begin studying at Level 1 and progress to Level 2 and then on to Level 3. If you already hold an Automotive qualification from another school or college you may be able to enter directly onto a Level 2 or a Level 3 course depending upon the qualification.



Which level will I study?

We have a course for everyone, regardless of your qualifications. Take a look at **page 6** for details on entry requirements and the level you'll begin at.



Amazing facilities

Our dedicated Automotive Academy includes electronic diagnostic test equipment (Snap-On), computerised paint mixing and spray painting booth (Junair). The facility also boasts MIG and TIG welding sets, computerised vehicle measuring and straightening jigs (Car-o-Liner), mobile air conditioning rigs and a Hunter HawkEye Wheel Alignment. Some theory sessions will take place at our main campus, a short walk from the Automotive Academy.



On course to be:

- an Apprentice in the sector
- an Automotive Technician
- a Body Repair Technician
- in an Entry-Level Automotive role
- a Paint Repair Technician
- a Refinisher
- a Service Manager.



My first impressions were that Newcastle College was a really good college and that they genuinely wanted to help you and get you to where you wanted to be in life and help you get to your chosen career path.

Phil Stacey

Level 1 Vehicle Maintenance



Aviation

As an Aviation student, you'll be based at our award-winning Aviation Academy and have a learning experience like no other. Work alongside industry professionals and gain work experience whilst learning the skills you need for a high-flying career in the aviation engineering sector.

Courses

Aeronautical Engineering

L3



Study requirements

When you apply to study at Level 3 at the Aviation Academy you'll begin on an Extended Certificate and in your second year progress on to the full Diploma.

Which level will I study?

We have a course for everyone, regardless of your qualifications. Take a look at **page 6** for details on entry requirements and the level you'll begin at.

What's next?

Once you have successfully completed your Level 3 course you can stay at Newcastle College to study a degree at the University Centre, such as Aircraft Maintenance Engineering.

Amazing facilities

The Aviation Academy is based at Newcastle International Airport and is the only facility of its kind in the region. It includes a 12,000m² aircraft hangar housing multiple aircraft such as a seven-seater Beechcraft Premier 1 business jet, a BAE Jetstream 31 and two Jet Provost trainers. You'll also have access to both a mechanical and avionics workshop containing the latest Navigational Training simulators.



On course to be:

- a licensed Aircraft Maintenance Engineer
- an Aircraft Mechanic.

Business

Our exciting Business qualifications have been designed and developed with business professionals and employers to prepare you for a career in Business. You'll learn how to manage a successful business by developing your knowledge and skills in areas such as people management, finance and business behaviours. You'll learn from tutors who have worked in industry and you'll work with local employers supporting them on real projects to gain real experience.

Courses

Business

L3

Business Support
(Management and Administration)

L3

Diploma in Skills for Business

L2

When you study our Level 3 in Business, you'll begin at Year 1 on either an Extended Certificate or a Foundation Diploma, depending on the grades you achieve at GCSE.

Upon successful completion of Year 1, you will then enrol on to your next year (Year 2) which will be either a Diploma (following Extended Certificate) or Extended Diploma (following Foundation Diploma).



Which level will I study?

We have a course for everyone, regardless of your qualifications. Take a look at **page 6** for details on entry requirements and the level you'll begin at.

What's next?

Once you have successfully completed your Level 3 course you can stay at Newcastle College to study a degree at the University Centre, such as Business Management.

T-Levels

available in Business

Find out more on page 38.

Amazing facilities

You'll be based in our Trevelyan building and learn in fully equipped classrooms and have access to dedicated learning zones to help develop your professional skills.



On course to be:

- an Accountant
- a Business Administrator
- a Customer Service Coordinator
- a Finance Manager
- a Human Resources Executive
- a Marketing Executive
- an Operations Manager
- a Personal Assistant
- a Project Manager
- a Retail Manager
- a Secretary.



As soon as I found out who was going to be teaching me and I saw how good they were, I was absolutely certain that studying at Newcastle College was the right step for me. I had family members who had been Newcastle College students before and they loved it too! Also, the main campus is in the centre of Newcastle so you're never far away from anything you need or whatever you want to do.

Ethan King

Level 3 National Extended Diploma in Business



Early Years

If you love the idea of helping children learn and grow through play, our Early Years courses are perfect for you! You'll get hands-on experience in Early Years settings, learning how to care for children safely. You'll also use fun activities to help them develop and interact with others. This is your first step toward an exciting and rewarding career in Early Years.

Courses

Caring for Children

L1 L2

Early Years Educator
(Education and Early Years)

L3

Early Years Practitioner

L2

Our Early Years courses require DBS clearance. When you apply you'll be given details on how to make this application.



Which level will I study?

We have a course for everyone, regardless of your qualifications. Take a look at **page 6** for details on entry requirements and the level you'll begin at.

What's next?

Once you have successfully completed your Level 3 course you can stay at Newcastle College to study a degree at the University Centre! We offer a Foundation Degree in Children and Young People that can take your career in Early Years to the next level.

T-Levels available in Early Years

Find out more on page 38.

Amazing facilities

You'll be based in our Parsons building and will benefit from real-work environment simulation rooms for babies and toddlers including a baby care area, play facilities and a multi-sensory room for students learning to work with children with supported care needs.



Our student experience

Our Early Years students have taken part in activities with different local schools, such as:

- organising parties for local nurseries.
- visiting Seven Stories to learn about reading books to children.
- working with schools and an Adventure Playground to develop understanding of outdoor learning.

On course to be:

- a Childminder
- a Crèche Assistant
- an Early Years Educator
- a Family Support Worker
- a Nanny
- a Nursery Assistant
- a Primary School Teacher
- a Social Worker.



At first, I wasn't sure about going into a working nursery but the children, the teachers and the nursery support staff are all so lovely. From juggling nursery work and college work, it has also improved my time management skills too.

Keira Mills

Level 3 Childcare and Education



Computing

Our Computing courses provide hands-on learning to prepare you for the fast-paced, ever-growing digital tech industry. You'll benefit from excellent facilities, working with a range of programmes and hardware to enhance your skills. You'll gain practical experience with digital employers and collaborate on exciting projects. Whether you want to specialise in cyber security, web design, or gaming, there's a course to help you succeed.

Courses

Digital Infrastructure
(Digital Support Services) **L3**

Digital Production, Design and Development **L3**

Esports **L2 L3**

Games Development **L3**

Information Technology **L2 L3**

You will begin studying on either a Level 2 or Level 3 course depending on your grades. Once you successfully complete your course you can progress to the next level in Computing.



Which level will I study?

We have a course for everyone, regardless of your qualifications. Take a look at **page 6** for details on entry requirements and the level you'll begin at.

What's next?

Once you have successfully completed your Level 3 course you can stay at Newcastle College to study a degree at the University Centre! We've got a range of degrees to choose from within Computing, including Games Technologies, Cyber Security and Software Engineering.

T-Levels available in Computing

Find out more on page 38.

Amazing facilities

You'll be based in our Trevelyan building and have access to a dedicated IT suite for game rendering and graphics production, network labs with Cisco and Microsoft technologies, IT pods and areas for vendor qualification training, plus much more.



On course to be:

- an IT Technician
- a Network Administrator
- an Operations Manager
- a Project Manager
- a Security Analyst
- a Security Engineer
- a Software or Games Developer
- a Systems Development Manager
- a Web Designer.



I find the strategic side of Esports really interesting; where you learn how an actual pro player plays, the requirements, how much work and effort it takes to actually become a professional player. It's so much more than just playing computer games.

If you're thinking of studying a course here, I'd say go for it! The tutors are fantastic and the industry links are brilliant.

Kyle Maddison

Level 3 Esports



Construction

If you love hands-on learning and want to develop skills that will always be in high demand, a career in Construction could be for you. From Plumbing, Plastering, and Painting to Carpentry and Joinery, Electrical Installation or Bricklaying, a Construction course at Newcastle College can help you craft your future.

Courses

Bricklaying	L1
Carpentry and Joinery	L1
Electrotechnical Engineering (Building Services Engineering)	L3
Electrical Installation	L2
Painting and Decorating	L1
Plastering	L1
Plumbing	L2

Typically you will begin studying on a Level 1 course and once you successfully complete your course you can progress to the next level in Construction.



Which level will I study?

For most of our Construction courses, you'll begin studying at Level 1 and progress to Level 2. If you already hold a Level 1 Construction qualification from another school or college, you can start directly on a Level 2 course. For our Electrical courses, you will begin studying at Level 2 (subject to your GCSEs and skills assessment) and you can progress on to a Level 3 Electrotechnical T-Level, an Apprenticeship or employment as a trainee electrician.

T-Levels

available in Construction

Find out more on page 38.

Amazing facilities

You'll be based in the Construction Academy at our Rye Hill campus. This facility is the place to learn Bricklaying, Carpentry and Joinery, Electrical Installation, Painting and Decorating, Plastering and Plumbing. It houses large workshops which replicate different construction sites and real-working environments to help you get to grips with the construction world.



On course to be:

- a Bricklayer
- a Carpenter
- an Electrician
- a Joiner
- a Painter and Decorator
- a Plumber.

Digital Arts

Our Digital Arts courses help you explore and develop your creativity with practical projects and briefs from employers. This hands-on approach ensures you have every opportunity to demonstrate your creative talent through collaboration, exhibitions, employer projects and workshops, setting you up for your future career in the creative industries. You'll learn from experienced artists and designers using state-of-the-art equipment to help you perfect your technique.

Courses

Animation and Illustration	L3
Digital Arts	L1 L2
Film, TV and Media	L3
Graphic Design	L3
Photography	L3
Subsidiary Diploma in Visual Arts	L3

Many of our Digital Arts courses require you to provide a portfolio and demonstrate your skills. When you apply you'll be invited in to meet course tutors and show your work.



Which level will I study?

We have a course for everyone, regardless of your qualifications. Take a look at **page 6** for details on entry requirements and the level you'll begin at.

What's next?

Once you have successfully completed your Level 3 course you can stay at Newcastle College to study a degree at the University Centre! We've got a range of degrees to choose from including Photography, Graphic Communication, Film, TV and Media, Illustration and Animation.

Amazing facilities

You'll be based in our Mandela building with access to a large industry-standard photography studio, including tethered capture and darkrooms. There are also screen print studios, Mac suites, an animation, games and visual FX workshop with rendering farm and a TV studio with Black Magic 4k cameras and green screen facilities.



On course to be:

- a 2D and 3D Animator
- a Graphic Designer
- a Photographer
- a Producer or Director
- a Scriptwriter
- a Video Producer
- a Web Designer.

Engineering

Engineering courses at Newcastle College focus on giving you hands-on, practical experience and a sound understanding of the theory and principles behind everything you do. You'll join a group of curious and creative minds to spend time researching, designing, building and testing new technologies and products. Learning from expert tutors, you'll develop your skills using specialist equipment in our industry-standard workshops.

Courses

Engineering

L2 L3

Engineering (Advanced Manufacturing)

L3

You will begin studying on either a Level 2 or a Level 3 course depending on your grades. Once you successfully complete your course, you can progress to the next level in Engineering.



Which level will I study?

We have a course for everyone, regardless of your qualifications. Take a look at **page 6** for details on entry requirements and the level you'll begin at.

What's next?

Once you have successfully completed your Level 3 course, you can stay at Newcastle College to study a degree at the University Centre! We offer degrees in Engineering, including Mechanical Manufacturing Engineering, which will kick-start your career in industry.

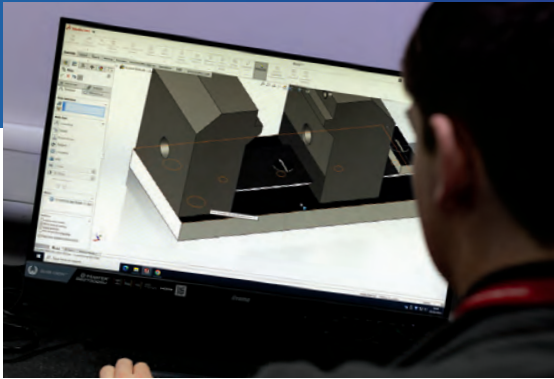
T-Levels

available in Engineering

Find out more on page 38.

Amazing facilities

You'll study in our Rutherford building with access to our state-of-the-art Advanced Manufacturing Centre. It includes a CNC cell with industry-standard machines, a robotics cell with Fanuc robots, a mechatronics cell for hydraulics, pneumatics, and PLCs, and a design cell with 3D printers and software. Our Fabrication and Manual Machining Workshops offer brand-new, industry-standard equipment to build foundational skills for advanced training.



On course to be:

- an Electrical Engineer
- an Engineering Technician
- a Manufacturing Engineer
- a Mechanical Engineer
- a Military Engineer
- a Quality Engineer.

Hair, Beauty and Make-up

If you enjoy helping others to look and feel great, a career in the Hair, Beauty and Make-Up industry might just be for you. You'll learn from qualified practitioners and develop your practical skills in state-of-the-art facilities, learning environments and commercial salons. Work placements offer you the chance to gain real-work experience and learn more about what it's like to work in the industry.

Courses

Hairdressing

L1 L2 L3

Beauty Therapy

L1 L2 L3

Make-Up

L1 L2 L3

For the majority of our Hair, Beauty and Make-Up courses you will begin studying at Level 1 or Level 2 and progress up to Level 3. If you already hold a Level 2 qualification from another school or college you may be able to begin at Level 3.



Which level will I study?

We have a course for everyone, regardless of your qualifications. Take a look at **page 6** for details on entry requirements and the level you'll begin at.

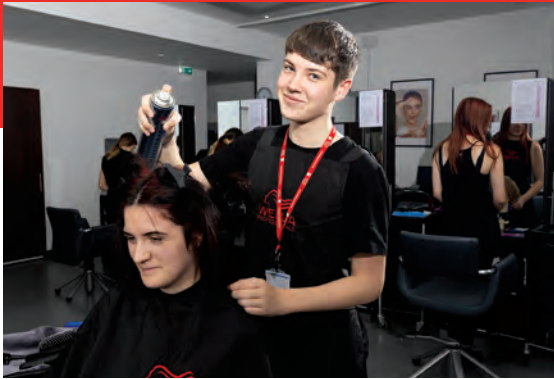
What's next?

Once you have successfully completed your Level 3 course you can stay at Newcastle College to study a degree at the University Centre! We've got a range of degrees to choose from including Aesthetics and Clinical Practice, Advanced Skin Techniques and Advanced Techniques in Media and Semi-Permanent Make-Up.



Amazing facilities

You'll be based in the Lifestyle Academy at our Rye Hill campus where you will have access to our Hair, Beauty and Make-Up training floor with inspiring industry-standard facilities and equipment, using global brands such as Morphe, Wella, Eve Taylor and Dermaquest. Plus, you will benefit from working in The Retreat, our commercial hair and beauty salon and nail bar, giving you valuable real working experience alongside your course.



On course to be:

- an Aesthetics Therapist
- a Beauty Receptionist
- a Beauty Therapist
- a Colour Technician
- a Hairdresser
- a Make-Up Artist
- a Media Make-Up Artist
- a Salon or Spa Manager
- a Spa Therapist
- a Theatrical Make-Up Artist.



Before coming to Newcastle College, if I did someone's hair I never really pushed myself or seriously attempted more challenging hair techniques, but now I'm able to learn and practice on real people, it's so much better! I feel like I can do anything, but I love the fact I can uplift people through my work so they can feel really good about themselves.

Esraa Kelezli

Level 2 Hairdressing



Health and Care

Our Health and Care courses focus on giving you the practical experience and understanding of what it takes to work in the health sector. Learning from experienced tutors, you'll develop your practical skills in our dedicated healthcare facilities, including simulated hospital wards. Work placements will help you develop your understanding of current social issues as well as gain the skills and knowledge you need to work in care, social care or within a medical profession.

Courses

Health and Social Care

L1 L2 L3

Supporting the Adult Nursing Team (Health)

L3

Supporting the Mental Health Team (Health)

L3

Typically you'll begin studying at Level 1 or Level 2 and progress up to Level 3. However, depending on your GCSE grades you could begin your course at Level 3. If you already hold a Health and Care qualification from another school or college you may be able to enter directly onto the next level of the course.



Which level will I study?

We have a course for everyone, regardless of your qualifications. Take a look at **page 6** for details on entry requirements and the level you'll begin at.

What's next?

Once you have successfully completed your Level 3 course you can stay at Newcastle College to study a degree at the University Centre! We've got a range of degrees to choose from in Health and Care, including Counselling, Healthcare Practice and Public Health.

T-Levels

available in Health and Care

Find out more on page 38.

Amazing facilities

You'll be based within our Parsons building and will benefit from a floor of dedicated facilities including two fully functioning hospital simulation wards, operational hospital reception, intensive care unit, paediatric ward and scrub room, plus much more.



On course to be:

- a Carer
- a Counsellor
- a Family Support Worker
- a Midwife
- a Nurse
- a Paramedic
- a Social Worker
- a Teacher
- a Youth Worker.



The tutors on my course are the best teachers I've ever had, they've been through it all and are always sharing their experience with us. You'll get to learn in fantastic facilities, including simulation suites, and you'll benefit from learning in a safe, supportive environment so you can learn the skills you'll need for industry.

Luke Rowe

*Level 3 Extended Diploma
in Health and Social Care*



Hospitality and Catering

If you have a passion for food and hospitality, our courses will help you perfect your skills to become a top chef or deliver exceptional front-of-house service. Learn from an expert team in industry-standard kitchens and put your skills to the test in our student-run bistro and fine-dining restaurant, The Chefs' Academy. You may also take part in masterclasses, work placements in restaurants or even national competitions.

Courses

Introduction to Professional Cookery

L1

Professional Cookery

L2 L3

You'll begin on either a Level 1 or 2. In your second year, you'll have the opportunity to progress to the next level, up to a Level 3 in Hospitality or Cookery.



Which level will I study?

We have a course for everyone, regardless of your qualifications. Take a look at **page 6** for details on entry requirements and the level you'll begin at.

What's next?

Once you have successfully completed your Level 3 course you can stay at Newcastle College to study a degree at the University Centre! You can study our industry-inspired Foundation Degree in Culinary Arts.

Amazing facilities

Newcastle College's Hospitality facilities hold Gold Centre of Excellence status for food, beverage and professional cookery. You'll learn in one of our state-of-the-art training kitchens and award-winning restaurant, The Chefs' Academy.



On course to be:

- a Barista
- a Caterer
- a Chef
- a Front of House Assistant
- a General Manager
- a Restaurant Manager.



My course has given me so many experiences from working in a Michelin Star fine dining restaurant to a fast-paced kitchen environment. It's great that I had the opportunity to be involved with these brands and such established restaurants.

Jaiden Shek

Level 2 Professional Cookery



Law, Policing and Protective Services

Our LPPS courses are the perfect preparation for the challenge of the police and wider criminal justice sector, armed forces and fire service. Supported by industry, they focus on practical experience in your area of interest and you'll benefit by learning from experienced tutors and employer partnerships, getting you ready for a career in industry.

Courses

Criminology and Law	L2
Criminology and Criminal Justice Studies	L3
Entry to the Uniformed Public Services	L3
Law and Criminal Justice Studies	L3
Legal Services (Crime, Criminal Justice and Social Welfare)	L3
Policing	L3
Protective Services	L1 L2

When you study our Level 3 in Law, Policing and Protective Services you'll begin on either a Diploma or an Extended Diploma, depending on the grades you achieve at GCSE.



Which level will I study?

We have a course for everyone, regardless of your qualifications. Take a look at **page 6** for details on entry requirements and the level you'll begin at.

What's next?

Once you have successfully completed your Level 3 course you can stay at Newcastle College to study a degree at the University Centre! You can study our degree in Criminology, Policing and Criminal Law.

T-Levels

available in Law, Policing and Protective Services

Find out more on page 38.

Amazing facilities

You'll be based in our Trevelyan building and will have the chance to learn from professionals in dedicated study spaces as well as go behind the scenes to explore careers in the police, the criminal justice system, fire and rescue or the armed forces.



On course to be:

- a Criminologist
- a Firefighter
- an Immigration Officer
- a Military Personnel
- a Police Officer
- a Security Officer
- a Solicitor.



I wanted to do something active and practical. With Entry to the Uniformed Public Services, I knew I would be able to develop transferrable skills at the same time as working towards a specific career.

Jack Foister

*Level 3 Entry to the
Uniformed Public Services*



Learning Development

Learning Development study programmes at Newcastle College are created to enable those aged 16-24 years who are living with a disability and/or learning difficulty to progress and prepare for employment, make friends and learn to live more independently. Our personalised approach to education and learning will help you to develop a person-centred learning plan across a range of vocational areas.



Where will I study?

The Learning Development programme is individual to you. You will be based at our Rye Hill campus in the heart of Newcastle and, if you choose to develop your vocational skills, you'll be placed in one of our real-working environments on campus. Progression onto supported internship placements will be sourced by experienced staff working closely with external employers.

Your experience

Learning Development provides group or individual specialist support across a range of vocational areas with excellent facilities and small classes. Your programme will be uniquely tailored to you and may also include travel training, personal and social development and employability skills. When combined with our internal and external work placements, wide range of enrichment activities and dedicated staff, our learners have consistently achieved outstanding achievement rates in nationally recognised qualifications in our core vocational area of retail.



Courses on offer

Life Skills Year 1

(Award in Personal Progress)

This course is ideal if you're a SEND learner and want to develop your independent living skills. The course will focus on helping you to develop as a person. You could be working on areas such as independent travel, social development, independent living skills and English and maths.

Life Skills Year 2

(Certificate in Personal Progress)

As part of this course, you will have the opportunity to further develop your skills, knowledge and behaviours to help you work towards being as independent as possible in your future. The course will include social development, independent living skills, character and employability skills and English and maths.

Vocational Options

This course gives you the chance to develop your independence and employability skills in a customer-focused setting. The course combines both theory and practical work, a placement in our real-working environment at the College and enrichment activities designed to support your personal and social skills.

Developing Vocational Skills

You will be able to build on your understanding of employment and develop the skills needed to seek employment in your chosen area. You will work with your Personal Tutor to develop your individual learning plan and set realistic learning goals. A placement is an essential part of this course where you will have the opportunity to apply your practical skills and join in with enrichment activities designed to develop your personal and social skills.

Supported Internship

If you have learning difficulties/disabilities but want to gain meaningful experience in a real-working environment outside of the College, then this course is for you. You will access the College one day a week to further develop your maths and English skills. The remainder of the week you will spend time at your external work placement. Your job coach will work with you and support you and your employer to fulfil your training needs.

On course to be:

- an independent person
- a more confident person
- who you want to be.



Music

Our Music courses will help you develop your technical, performance and creative skills as a musician, preparing you for a career in the industry. You'll benefit from fantastic facilities, work experience opportunities and be able to collaborate with other students.

Courses

Music Industry Skills	L2
Music Performance	L3
Music Production (Electronic Music)	L3
Music Production (Studio and Live Sound)	L3

Our Music courses require you to demonstrate your talent through an audition. When you apply you'll be given more information on this.



Which level will I study?

We have a course for everyone, regardless of your qualifications. Take a look at **page 6** for details on entry requirements and the level you'll begin at.

What's next?

Once you have successfully completed your Level 3 course you can stay at Newcastle College to study a degree at the University Centre! We've got a range of degrees to choose from in music, including Music Production and Popular Music Performance.

Amazing facilities

You'll study at our renowned Performance Academy, which houses an industry-standard music venue, recording studios, dedicated electronic music resources and rehearsal rooms.



On course to be:

- a Composer
- a DJ
- a Music Manager
- a Music Journalist
- a Music Producer
- a Musician
- a Songwriter
- a Sound Engineer
- a Writer/Composer.

Performing Arts

Whether you're interested in Acting, Dance or Musical Theatre, our Performing Arts courses will help you to develop your technical and performance skills as well as your industry knowledge. You will learn from industry-experienced tutors in fantastic facilities, including our purpose-built studios and theatre. Your learning will be supported by guest lectures and workshops from leading industry professionals, as well as trips to local and national theatres.

Courses

Acting	L3
Dance	L3
Musical Theatre	L3
Performing and Production Arts	L2

Our Performing Arts courses require you to demonstrate your skill level through an audition. When you apply you'll be given further details on this.



Which level will I study?

We have a course for everyone, regardless of your qualifications. Take a look at **page 6** for details on entry requirements and the level you'll begin at.

What's next?

Once you have successfully completed your Level 3 course you can stay at Newcastle College to study a degree at the University Centre! We've got a range of degrees to choose from in Performing Arts including Dance, Musical Theatre and Acting for Stage and Screen.

Amazing facilities

You'll study at our nationally renowned Performance Academy, which houses a 200-seat theatre with fly-tower, a studio theatre, nine studios with sprung floors, barres and mirrors and an experimental theatre hub.



On course to be:

- an Actor
- a Choreographer
- a Dancer
- a Director
- an Entertainer
- a Freelance Practitioner
- a Musical Director
- a Musical Theatre Performer
- a Playwright
- a Rehearsal Director
- a Screenwriter
- a Teacher.



Dance is something I have always loved to do and coming to college allowed me to do what I love every single day. I made amazing friends who shared the same passion and interest for Dance as I do. I was given incredible opportunities to take the next steps to start a career as a dancer.

Fay Williams

Level 3 Dance



Rail and Civil Engineering

Hands-on experience and industry support are at the centre of your learning when you study Rail and Civil Engineering with us. You'll be based at our Rail and Civil Engineering Academy, the only training facility of its kind in the North East, and have opportunities to undertake work experience with local employers. All of this is to help develop the skills and knowledge you need to succeed in the industry.

Courses

Civil Engineering (Design, Surveying, Planning for Construction)

L3

Introduction to the Rail Industry

L2

Rail Engineering

L3

You will begin studying on either a Level 2 or Level 3 course depending on your grades. Once you successfully complete your course, you can progress onto the next level in Rail and Civil Engineering.



Which level will I study?

We have a course for everyone, regardless of your qualifications. Take a look at **page 6** for details on entry requirements and the level you'll begin at.

What's next?

Once you've successfully completed your Level 3 course you can stay at Newcastle College to study a higher qualification at the University Centre. We've got a Foundation degree in Rail Engineering and an HNC in Civil Engineering.

T-Levels

available in Rail and Civil Engineering

Find out more on page 38.

Amazing facilities

Our Rail and Civil Engineering Academy in Gateshead boasts overhead line equipment, multiple permanent way set-ups, signalling and mechanical workshops. It also has fully-operating and interlocked switches and crossings, level crossing barriers and signalling equipment, plus much more!



On course to be:

- an Architect
- a Civil Engineer
- a Rail Engineer
- a Site Manager
- a Surveyor
- a Technician.



I enjoy the practicals the most – we recently did a sleeper change and it was really good because it gives us an idea of what is actually going to happen on track. I was in charge of that practical for my group, which was really rewarding. We managed to get it done a little quicker than the other groups too!

Archie Hughes

Level 3 Rail Engineering



Renewable and Subsea Engineering

Our offshore Renewables, Subsea and Welding courses have been developed with employers and offer exciting career opportunities within the wind energy, subsea, offshore, manufacturing or construction sectors. You'll benefit from links to employers, industry-experienced tutors as well as develop your skills in specialist facilities, all to help prepare you for a career in one of the fastest growing industries in the North East.

Courses

Engineering and Welding

L1

Fabrication and Welding Technologies
(Engineering, Manufacturing, Processing and Control)

L3

Offshore Renewables and
Subsea Engineering

L2 L3

Welding Fabrication

L2 L3

Your grades will determine which course level you start on. Once you successfully complete your course you can progress to the next level in Renewable and Subsea Engineering.



Which level will I study?

We have a course for everyone, regardless of your qualifications. Take a look at **page 6** for details on entry requirements and the level you'll begin at.

What's next?

Once you have successfully completed your Level 3 course, you can stay at Newcastle College to study a degree at the University Centre! We offer degrees that will help launch your career in the energy industry.



Amazing facilities

You will be based at our Energy Academy in Wallsend where you will access welding and fabrication facilities, wind turbine and solar panel testing plus the world's most advanced Engineering for Subsea and immersive Hybrid Reality System.



On course to be:

- an Energy Engineer
- a Fabrication Engineer
- a Health and Safety Installation Manager
- an Operations Supervisor
- a Project Manager
- a Site Manager
- a Subsea Engineer
- a Welder
- a Welding Inspector
- a Wind Turbine Technician.



It is helping me get to university and giving me the grades I need. Also, it's teaching me things that I just didn't have a clue about before. My course has allowed me to be a bit more general with my education because we cover so much on the course for example, electronics and mechanical. It's allowing me to build my skills in time management as well as critical thinking.

Chase Maughan

Level 3 Renewable and Subsea Engineering



Science

If you have a practical mind with a keen interest in the innovative and exciting world of science, then one of our Science courses might just be for you. Our courses are career focused, with a strong emphasis on practical and vocational projects to help you develop your skills. You'll benefit from work experience opportunities with a range of local employers and be taught by industry-experienced tutors to give you an insight into what it's like to work in the sector.

Courses

Applied Science

L2 L3

Applied Science
(Biomedical or Forensic and Analytical)

L3

Forensic and Behavioural Science

L3

Laboratory Sciences (Science)

L3

You will begin studying on either a Level 2 or Level 3 course depending on your grades. Once you successfully complete your course, you can progress to the next level in Science.



Which level will I study?

We have a course for everyone, regardless of your qualifications. Take a look at **page 6** for details on entry requirements and the level you'll begin at.



T-Levels

available in Science

Find out more on page 38.

Amazing facilities

You'll be based in our Parsons building and you'll have access to an instrumentation centre, fully equipped modern science labs, microbiology analysis labs and an automated process control room. We also house facilities for industrial chemical analysis equipment and a 'class 10,000' clean room.



On course to be:

- an Analytical Chemist
- a Biomedical Scientist
- an Ecologist
- an Environmental Scientist
- an Environmental Technician
- a Forensic Scientist
- a Marine Biologist
- a Pharmacist
- a Psychologist
- a Veterinarian.



A lot of my tutors are from industry, which gives me a lot of insights into what the science industry is like and what kinds of jobs I can do afterwards. I'd love to study microbiology or genetic research for my career, it's absolutely an interesting field to work in!

George Vincent

Level 3 Applied Science



Sport

Study a Sport course with us and you'll learn from world-class athletes and industry-experienced tutors to develop skills in coaching, fitness and personal development. You will benefit from our strong industry links and work with local sports teams including Newcastle United Foundation, Newcastle Falcons and Newcastle Eagles and have the opportunity to train in their specialist facilities, all to enhance your learning experience.

Courses

Sport

L1 L2

Sport and Exercise Science

L3

Sports Coaching and Development

L3

Sports Fitness and Personal Training

L3

Students studying Sport may have the opportunity to be part of The Newcastle United Foundation (NUF) Football Development Programme, the Rugby Hitz programme or play Basketball for Newcastle College Eagles.



Which level will I study?

We have a course for everyone, regardless of your qualifications. Take a look at **page 6** for details on entry requirements and the level you'll begin at.

What's next?

Once you have successfully completed your Level 3 course you can stay at Newcastle College to study a degree at the University Centre! We've got a range of degrees to choose from in Sport, including Sports Performance Conditioning and Rehabilitation, and Physical Education and Sports Coaching.

Amazing facilities

You'll be based in our Trevelyan building and you'll have access to fully equipped gyms, a sports hall, Sports Injury Clinic, fitness studio, climbing wall and extensive IT suites along with the Newcastle Eagles Community Arena with an eight-court basketball hall, gym and classrooms. You'll also have access to NUCASTLE (football), Kingston Park (rugby) and a biomechanics and physiology laboratory with motion analysis.



On course to be:

- a Performance Analyst
- a Performance Coach
- a Personal Trainer
- a Physical Education Teacher
- a Physiotherapist
- a Rehabilitation Therapist
- a Sports Coach.



On the Open Day we were taken to the Sports Hall and what stood out was the amount of facilities that the College has. There's a football pitch, basketball court, climbing wall and a gym that most local leisure centres wouldn't have. I just thought, if they're investing in equipment like that, then the teaching will be the same if not better.

Thomas Kitchen

Level 3 Fitness and Personal Training



Travel and Aviation Operations

If you're looking for a course that will broaden your horizons, our Travel and Aviation Operations courses will help take you there. Designed with employers, you'll develop skills in customer service, retail, transport and airline operations to prepare you for working in the travel industry. We have strong links with local travel agencies, hotels and attractions and you'll have the opportunity to gain work experience, as well as undertake industry trips, to give a real taste of what it takes to succeed in the sector.

Courses

Aviation Operations	L3
Aviation Operations (including Cabin Crew)	L2
Tourism and Aviation	L2
Travel and Tourism	L1 L3

You will begin studying on either a Level 1, Level 2 or Level 3 course depending on your grades. Once you successfully complete your course, you can progress to the next level in Travel and Aviation Operations.



Which level will I study?

We have a course for everyone, regardless of your qualifications. Take a look at **page 6** for details on entry requirements and the level you'll begin at.

What's next?

Once you have successfully completed your Level 3 course, you can stay at Newcastle College to study a degree at the University Centre! We've got a range of degrees to choose from in Travel and Aviation Operations, including Tourism and Events Management and Airline and Airport Management.

Amazing facilities

As a Travel and Tourism student, you'll study at our Lifestyle Academy with access to dedicated facilities and our industry connections with hotels and transport companies such as Lumo. For Aviation Operations, our Aviation Academy at Newcastle International Airport offers hands-on training with our commercial aircrafts for cabin crew training. You'll benefit from our industry partner, Newcastle International Airport, giving you real-world experience to enhance your CV and be work-ready.



On course to be:

- Airport Security
- a Baggage Handler
- a Cabin Crew Member
- a Holiday Resort Representative
- a Hotel Manager
- a Resort Entertainer
- part of Passenger Services Check-in
- a Travel Agent
- a Tourist Information Adviser.



I was a bit surprised at first when I found out it was based at the Aviation Academy, but I think that's part of what made the course stand out – nowhere else I was considering offered in-depth learning at an actual airport venue!

The amount of support available since I started at Newcastle College has honestly been fantastic. Whenever I was stuck on a problem, or if I ever needed extra support for any reasons, my tutors were always available to help me.

Ella Willis

Level 3 Diploma in Aviation Operations



HOW TO FIND US

By train or Metro

You can take a train or Metro to Central Station which is only a five to ten-minute walk away from our Rye Hill campus. Just turn left out of Central Station and pass Centre for Life. Continue past the Discovery Museum until you come to our campus. A recommended walking route is available from our website.

Visit www.ncl-coll.ac.uk/how-to-find-us

By car from the North or South

Take the A1 and follow directions to Newcastle and then pick up the A189 over the Redheugh Bridge. As you cross the Redheugh Bridge, move into the left hand lane and turn left immediately after you have crossed the bridge. At the first roundabout turn right into the Rye Hill campus car park. Parking is free.*

By car from Newcastle City Centre

Follow signs to Central Station, or Blaydon A695. Once past the station, bear left at the traffic lights beside the Centre for Life, go straight on at the next traffic lights and turn right at the next traffic lights into Railway Street. Pass under the Redheugh Bridge approach road, bend right with the road and then go straight on at the first roundabout on Scotswood Road into the College car park. Parking is free.

Once on campus

For general enquiries, make your way to Student Services.

Newcastle College
Armstrong House
Rye Hill Campus
Scotswood Road
Newcastle upon Tyne
NE4 7SA

0191 200 4000

enquiries@ncl-coll.ac.uk
ncl-coll.ac.uk

Further Newcastle College campuses can be found at:

Automotive Academy
Unit 36 Invincible Drive
Armstrong Industrial Park
Newcastle upon Tyne
NE4 7HX

Aviation Academy
Newcastle International Airport
Woolsington
Newcastle upon Tyne
NE13 8BT

Energy Academy
Hadrian Road
Wallsend
NE28 6HH

Rail and Civil Engineering
Academy
William Street
Felling
Gateshead
NE10 0JP

* Subject to availability



This guide and other course information is available in alternative formats and large print. Call 0191 200 4000.

Safeguarding

We are committed to Safeguarding and ensuring all learners experience a secure, safe and welcoming environment in which they can fulfil their potential. Specific policies and procedures are in place to safeguard young people and vulnerable adults; these are robust and are reviewed regularly. Procedures are in place to take all reasonable measures to ensure risk is minimised and appropriate action is taken to address any welfare concerns.

Newcastle College welcomes diversity in its student population – valuing differences in race, gender, sexual orientation, disability, religion or belief, class and age. We actively oppose discrimination, aim to remove all conditions that put people at a disadvantage, strive to improve access and to provide outstanding support. We are committed to providing an inclusive learning environment. We have produced a Single Equality Scheme which sets out our response to statutory obligations and our approach to the active promotion of equality and diversity. Please discuss your support needs with us and we will make every reasonable effort to make adjustments to help you succeed.

Disclaimer

Newcastle College will take all reasonable steps to provide the educational services and courses as described in this prospectus and in further documents. However, it does not guarantee the provision of such services. The provision of courses is dependent on there being sufficient demand to make their operation viable. At the time of publication (August 2024) all course titles and information were correct.

NCG Guarantee

Newcastle College is proud to be part of NCG, one of the country's leading college groups.

We are one of seven colleges across the country that make up NCG, meaning we're a key part of providing education and training to learners, apprentices and employers across the UK.

Together, we share expertise, support each other to grow, help each other to innovate and accomplish real change for individuals, communities and economies across the country.

Student benefits

Students studying at any of our colleges benefit from the **NCG Guarantee**. This guarantee gives all our students access to a range of tools and initiatives centred around a core set of principles. Our courses, additional support services and enrichment activities will equip you with a wider set of skills, all of which aim to make you more employable.

Put simply, the NCG Guarantee gives students access to additional activities, resources and initiatives to help you achieve your ambitions and career goals.

The NCG Guarantee is centred around:

- Community
- Digital
- Employability
- Enterprise
- Mental Fitness.

Throughout your time with us you will be involved in a range of projects and initiatives focused on these principles. Coupled with excellent teaching and learning, you will complete your course with a unique set of skills which help set you up for your future.



**ON
COURSE
FOR
SUCCESS.**

Newcastle College
Rye Hill Campus
Scotswood Road
Newcastle upon Tyne
NE4 7SA

0191 200 4000
enquiries@ncl-coll.ac.uk
ncl-coll.ac.uk